

HIRBEMERDON TEPE ARCHAEOLOGICAL PROJECT 2003-2013 FINAL REPORT

CHRONOLOGY AND MATERIAL CULTURE

by NICOLA LANERI



BOLOGNA 2016

Hirbemerdon Tepe Archaeological Project 2003-2013 Final Report: Chronology and Material Culture

by Nicola Laneri

With contributions by

Mark Schwartz, Jason Ur, Stefano Valentini,
Marta Aquilano, Lorenzo Biazzo, Rodolfo Brancato,
Lorenzo Crescioli, Margherita Dallai, Guido Guarducci
Martina Massimino and Simone Nannucci



Bologna 2016



*Ministero degli Affari Esteri
e della Cooperazione Internazionale*



UNIVERSITÀ
degli STUDI
di CATANIA



Graphic design and layout by
BraDypUS s.a. (Julian Bogdani ed Erika Vecchietti) e Ivano Devoti

Cover by
Vincenzo De Luce

Bologna (BraDypUS) 2016
ISBN: 9788898392322
ISBN-A: 10.978.8898392/322

This book is freely available *online* at
http://books.bradypus.net/hirbemerdon_report

Hirbemerdon Tepe Archaeological Project 2003-2013 Final Report: Chronology and material culture by Nicola Laneri is licensed under the **Creative Commons Attribution-NonCommercial-NoDerivatives 4.0 International** license. It means that you are free to: copy, disseminate, communicate and expose in public this work, at the condition that its content is not altered or changed, that the authorial propriety of the editors and authors is granted, and not for commercial use. The Publisher will always grant open access to the contents, without any limitation to dissemination.

BraDypUS s.a.
via A. Fioravanti, 72, 40129 Bologna
www.bradypus.net; info@bradypus.net
C.F. e P.IVA 02864631201

Table of contents

FOREWORD	7
ABSTRACT	9
ÖZET	9
Chapter 1. Introduction	
by Nicola Laneri, Mark Schwartz and Jason Ur	11
The site	11
The geomagnetic survey	12
The HMTS (Hirbemerdon Tepe Survey)	13
The archaeological excavation	13
The chronological phases	14
Chapter 2. Phase I: Late Chalcolithic period	
by Simone Nannucci	17
Stratigraphy and Architecture	18
Pottery Assemblage	18
Methodological criteria	18
Main classes and diagnostic forms from Phases LC 3 and LC 4	19
Phase I pottery assemblage at Hirbemerdon Tepe	20
Chapter 3. Phases IIA, IIB, and IIIA: The Early Bronze Age	
by Nicola Laneri, Margherita Dallai and Lorenzo Biazzo	27
Phase IIA - Early Bronze Age I	27
Architecture	28
Pottery	28
Phase IIB - Early Bronze Age II	30
Architecture	30
Pottery	31
Phase IIIA - Early Bronze Age III/IV	33

Architecture	33
Pottery	35
Animal figurines	36
Hirbemerdon Tepe and its regional context during the third millennium BCE	38
Chapter 4. Phase IIIB: The Middle Bronze Age	
by Nicola Laneri, Stefano Valentini, Marta Aquilano, Margherita Dallai and Martina Massimino	41
Architecture	41
Pottery	48
The ceremonial objects	64
Animal figurines and wheels of chariot models	68
The metal production	72
Other small finds	79
Chapter 5. Phase IIIC: The Late Bronze Age	
by Lorenzo Crescioli	81
Architecture	82
Pottery	83
Hirbemerdon Tepe ceramic repertoire	83
The Late Bronze Age in the Upper Tigris Valley	88
Small finds	91
Locating Hirbemerdon Tepe in a Late Bronze Age landscape	91
Chapter 6. Phase IVA and IVB: The Early and Middle Iron Age	
by Guido Guarducci	95
Archaeological contexts and architecture	95
Pottery	98
Chapter 7. Phase V: The Late Iron Age	
by Rodolfo Brancato	103
Architecture	103
Pottery	104
Small finds	105
Chapter 8. Phase VI and VII: The Medieval and Ottoman periods	
by Rodolfo Brancato	107
Phase VI: The Medieval period	107
Architecture	107
Pottery	108
Small finds	108

Phase VII: The Ottoman Period	109
Architecture	109
Pottery	110
Small finds	110
Chapter 9. Andirons, lamps and portable hearths	
by Marta Aquilano	113
Andirons	113
Lamps	115
Portable hearths	116
Chapter 10. Other small finds	
by Margherita Dallai	117
Objects related to textile activities	117
Discs	122
Bone needles	124
Chapter 11. Conclusions	
by Nicola Laneri	127
Bibliographic References	129
General Bibliographic References	133
CATALOGUE	149
Figures	151
Architecture	159
Phases I, IIa, IIb, IIIa	159
Phase IIIb	167
Phase IIIc	195
Phases IVa, IVb	199
Phase V	207
Phases VI, VII	211
Sections	217
Matrixes	221
I. Pottery catalogue	231
Notes to the pottery catalogue	233
Phase I	235
Phase IIa	247
Phase IIb	255

Phase IIIa	265
Phase IIIb	281
Phase IIIc	379
Phase IVa	405
Phase IVb	425
Phase V	435
Phase VI	451
Phase VII	457
II. Objects catalogue	459
Abbreviations used in the description of objects	461
Phase I	463
Phase IIa	465
Phase IIb	471
Phase IIIa	477
Phase IIIb	481
Phase IIIc	553
Phase IVa	555
Phase IVb	557
Phase V	559
Phase VI	565
Phase VII	567
III. Ceramic typologies	571
Phase I	573
Phase IIa	575
Phase IIb	577
Phase IIIa	579
Phase IIIb	581
Phase IIIc	583
Phase IVa	585
Phase IVb	587
Phase V	589
Phase VI	591
Phase VII	593

Chapter 7. Phase V: The Late Iron Age

Rodolfo Brancato

In southern Anatolia, the transition from the Middle to the Late Iron Age was highly affected by the collapse of the Neo-Assyrian Empire, after the sack of Niniveh in 612 BCE by Babylonians and Medes (Guarducci and Laneri 2010: 22; Matney 2011: 453). It is still unclear whether the upper Tigris region passed under the political control of the Medes or of the Babylonians (Wilkinson and Tucker 1995: 64). Matney (2011: 454) asserts that there is no convincing evidence that either the Babylonians or the Medes had political control of the former Assyrian lands in the upper Tigris. Surveys of the upper Tigris region carried out by Algaze failed to find any evidence for occupation between the Middle Iron Age/Neo-Assyrian and Hellenistic periods (Algaze *et al.* 1991). In their analysis of survey data from the north Jazirah plain, Wilkinson and Tucker (1995: 64) noticed that the 'Post-Assyrian' period was almost invisible, and they admitted that the reason for this was due to the inadequate knowledge of the pottery types. However, at the beginning of the fourth century BCE - more than a century after the foundation of the Achaemenid Empire by Cyrus in 559 BCE - a new class of Painted Ware started to be widely distributed in southeastern Anatolia (Summers 1993: 87; Dyson 1999; Matney 2011: 454). This variety of Painted Ware belongs to a late first millennium BCE tradition, the Triangle Ware with Festoon Ware. Dyson has defined three variations in this class: the Classic Triangle Ware, the Eastern Triangle Ware and the Western Triangle Ware (Dyson 1999b: 127); the Western Triangle Ware is common in eastern Anatolia (Matney 2011).

Phase V of Hirbemerdon Tepe, occurring between the Neo-Assyrian and Medieval phases of occupation (respectively, IV and VI), was not easy to date. Laneri (2014: 346) dated it to the Late Iron Age, and associated it with a Post-Assyrian phase that ended before the Hellenistic period (Late Iron Age, c. 610-350 BCE). The mound was subsequently abandoned until the Medieval period (Phase VI). In light of the identification of the Achaemenid settlement and cemetery of Gre Amer (Level 1) that Pulhan and Blaylock (2013; 2015 in press) have recognized between Level 2 (Middle Iron Age) and Level 0 (Hellenistic period), it is possible to think that Phase V of Hirbemerdon Tepe was a period highly influenced by the Achaemenid presence in the upper Tigris; the Achaemenid empire was present both in the upper Tigris and in the valleys of the Euphrates, as demonstrated by the excavations carried out at Gre Amer (Pulhan and Blaylock 2013; 2015 in press) and Tille Höyük (Blaylock 2015 forthcoming). At Hirbemerdon Tepe, the Late Iron Age remains consist of poorly preserved architecture and numerous pits located on the High Mound, that in terms of material culture are associated with Common Ware, Painted Ware, Incised Ware and Glazed Ware.

Architecture

The Late Iron Age level of occupation at Hirbemerdon Tepe has been recognized on the High Mound in Areas A, AB, AC and D (Figs. 10.1-10.3). The architectural remains of this phase mainly consist of poorly preserved walls (A0051, A0187, A0193-5, A0229, A0447), oriented SW-NE, and traces of beaten and stone paved floors (A0169, A0192, A0438). In relation to floor A0438, traces of a drainage system have been identified (A0439), which is orientated NW-SE. Numerous pits of various sizes and depths have been found between the Medieval and the Middle Iron Age occupations and recognized as Late Iron Age due to the pottery found within their fillings. The dirt contained within the pits generally consisted of medium to small

sized stones, clay (A0170), fragments of mudbricks (A0179, A0189) and ashes (A0506); in one case, a large quantity of shells were found within the filling of a pit (A0188). At the bottom of the pit (AC0077-78) four human skulls were found in a poor state of preservation. The filling of the pit was composed of bones and large to small sized stones. A few other cases of human bones in Late Iron Age pits have been recorded: at Kavuşan Höyük, in the silos 3 (G11d trench), the skeletons of a woman and a child were found with approximately 20 turtle skeletons (Kozbe 2013: 349-350); at Ziyaret Tepe, the N-519 pit - whose stratigraphic relationship to the Late Assyrian architecture is unclear (Matney *et al.* 2011: 71) - is a large feature filled with ash and human bones that had been burnt in parts. From this pit, at least four individuals (two adults and two infants) were distinguished.

In addition to the pits in the Phase V level, a tandur/tannur (A0454) and a burial (A0490, fig. 10.4) were recovered in the 2007 excavation season. 44 beads from a necklace were found (Pl. CLXXXI: 1) within the burial, together with a couple of earrings (Pl. CLXXXI: 7-8) and another two glass beads (Pl. CLXXXI: 2) of variable dimensions from 1.5 to 0.5 cm.

The Late Iron Age period at Kavuşan Höyük is similarly represented by poorly preserved architecture widely uncovered over the site, consisting of floors made of beaten mud and pits; an intact cylinder seal was found on a beaten mud floor in the northeastern corner of Trench G11: it is dated to the seventh/sixth century BCE (Kozbe 2013: 348-349). In the case of Ziyaret Tepe, within Operation L in the northern edge of the citadel mound, the Post-Assyrian period Level L3 (the so-called 'Pit Level') is characterized by pits of various sizes, drainage channels and two-roomed buildings whose wall foundations have been disturbed by subsequent Medieval foundations (Matney *et al.* 2007: 43; 2009: 52-53); in Operation G/R, the area south of Building 2 produced some *in situ* features stratigraphically recovered from the post-date abandonment of the Late Assyrian: these remains comprised three circular bread ovens, a small round pit, and a pottery kiln located in a domestic production area (Matney *et al.* 2009: 53). At Salat Tepe, underneath the Hellenistic Level in the northeastern part of the trench L 14, a burned floor with several small pits and remains of stone architecture were unearthed; a pit in the northern part of Trench L13 contained plain and painted Late Iron Age vessels together with red rimmed fine Hellenistic bowls (Ökse and Görmüş 2013: 189).

Pottery

In the upper Tigris region the dating of Late Iron Age and Hellenistic levels is generally based on the observation of the Triangle-and-Festoon Ware, usually associated with poorly preserved architecture. Also known as Western Triangle Ware, this Late Iron Age pottery is wheel-made and hard-fired (Dyson 1991a: 102). The decoration consists of groups of radial lines, zig-zags, grids or rows of solid triangles; it is labelled Triangle-and-Festoon Ware because of its wavy festoon motifs among horizontal bands and triangles (Kozbe 2013: 349); moreover, the Triangle Ware is commonly considered one of the marks of Achaemenid presence in western Iran (Pulhan and Blaylock 2015 in press). Triangle-and-Festoon Ware has been recorded from Üçtepe (Sevin 1990: 105; Köroğlu 2008: 344, figs. 1-5), Kavuşan Höyük (Kozbe 2013: 349), Giricano (Schachner 2002: fig. 15), Salat Tepe (Ökse and Görmüş 2013: 189), Ziyaret Tepe (Matney *et al.* 2007: 69, fig. 16) and Gre Amer (Pulhan and Blaylock 2013: 415, figs. 15-16; 2015 in press).

At Hirbemerdon Tepe this type of painted Late Iron Age Ware characterized the filling of the numerous pits uncovered in Areas A, AC and D, and its presence allowed the occupation of this phase to be clearly dated. It belongs to one of the four groups in which the Late Iron Age ceramics of the site can be divided: Painted Ware (39%), Incised Ware (9%), Common Ware (49%) and Glazed Ware (2%).

The Painted Ware consists of numerous body sherds of the previously mentioned Triangle-and-Festoon Ware characterized by the typical decoration of triangles (Pl. CXIII: 17-18; pl. CXIV: 22-23, 29-31); the typical Triangle-and-Festoon Ware forms are usually jars and jugs, such as those found at Gre Amer (Pulhan and Blaylock 2013: 415, figs. 15; 2015 in press) and Salat Tepe (Ökse and Görmüş 2013: 199, fig. 13). Among the Painted Ware there are many examples of carinated bowls decorated with traces of reddish yellow or brown paint on the rim, generally wheel-made with a fine quality (Pl. CXI: 5-8; pl. CXII: 9-11); similar carinated bowls are known from Gre Dimse (Karg 2002: 721) and Kavuşan Höyük (Kozbe

2013: 364, fig. 2) and were identified as part of the Post-Assyrian assemblage in the survey carried out by Wilkinson and Tucker in Iraq (1995: 215, fig. 74); Summers identified similar carinated bowls within the pottery sherds collected by Burney in 1955, during the surface collection carried out at Altintepe, and were identified as Achaemenid (Summers 1993: 101, fig. 5).

Incised Ware from the Late Iron Age level at Hirbemerdon consists of a few body sherds of small red slipped bowls, characterized by a decoration consisting of incised lines and dot motives reminiscent of stylized leaf patterns (Pl. CXV: 33-36; pl. CXVI: 37); many sherds of this class have lost their slip; the colour in section is from pink to reddish yellow; and inclusions mainly consist of sand, grit, limestone and mica. Similar ceramics are unearthed at Gre Dimse (Karg 2002: 720, fig. 6) and at Gre Amer (Pulhan and Blaylock 2015 in press). Pulhan and Blaylock proposed to look for a possible prototype within the Achaemenid metal bowl production for this class of carinated bowls (Curtis and Tallis 2005: 109); finally, the possible association with Hellenistic mould-made ceramics, as pointed out by Pulhan and Blaylock (2015 in press) seems to be excluded, in view of the general absence of other typical Hellenistic materials at Gre Amer as well as at Hirbemerdon Tepe.

Within the Late Iron Age ceramics from Hirbemerdon Tepe, the largest component is of Common Ware, which is generally not wheel-made. Forms within the ceramics include: juglets (Pl. CXVIII: 54-60; pls CXIX; CXX: 65); bowls (Pl. CXVI: 40, 42-44; pl. CXVII: 45-47); storage jars (Pl. CXVII: 51; pl. CXVIII: 52-53), jars (Pl. CXVII: 48-50) and one cup (Pl. CXVI: 41). In cross-section the Common Ware shows a pink to red, light or reddish yellow colour and medium to fine inclusions, mainly consisting of mica, sand and limestone. The 4565 (Pl. CXVIII: 60) juglet's profile is characterized by an everted rim and a strap handle and the surface is polished; 4110 (Pl. CXX: 65) is the profile of a wheel-made juglet with a complete handle and part of the smoothed body. The Common Ware bowls' profile presents an in-turned (Pl. CXVI: 40, 42-43) or carinated rim: the 5235 (Pl. CXVII: 45) bowl has a carinated inverted rim, grooved under the carena, similar to a bowl from Kavuşan Höyük (Kozbe 2013: 364, fig. 2). Among the storage jars, two are characterized by incised decorations (Pl. CXVII: 51; pl. CXVIII: 53); the 4259 (Pl. CXVIII: 52) jar's profile is similar to everted rims that characterize the Post-Assyrian assemblage according to Wilkinson and Tucker (1995: 215, fig. 74).

The Late Iron age Glazed Ware at Hirbemerdon Tepe consists of two sherds characterized by a grayish green glaze; inclusions are of medium dimensions, consisting of sand and mica: 4568 (Pl. CXVI: 38) - pink in section - is a light, bluish gray, wheel-made plate sherd characterized by a straight, square rim, slightly everted; 6574 (Pl. CXVI: 39) is a fragment of a jar with rope-shaped handles, whose colour in cross-section is pale yellow; parallels can be found with a jar unearthed in Level 1 at Gre Amer dated to the Achaemenid period (Pulhan and Blaylock 2013: 418, fig. 20).

Small finds

The small finds dating to the Late Iron Age consist of stone and metal objects, recovered from both the surface of the beaten floor and from the filling of pits.

Twelve loom weights have been recovered in Late Iron Age contexts, all clay made except for three that are made from stone (Pl. CLXXXII: 13-15); thirteen clay loom weights (Pl. CLXXXII: 16-24; pl. CLXXXIII: 25-28) come from A0506, a silos whose filling is characterized also by dirt, ashes and animal bones.

A fragmented stone pestle (Pl. CLXXXI: 12) was recovered from a pit (A0441) whose filling was composed of dirt, small stones and fragments of mudbricks; two crucibles come from a deep pit (A0468) located in A Area cutting the Late Bronze Age stratum (Phase IIIC); 2773 (Pl. CLXXXI: 11) is a bowl with a texture characterized by inclusions of medium dimensions (sand, grit, limestone, chaff, mica); 2947 (Pl. CLXXXI: 10) presents residues of copper/bronze.

One metal pin (Pl. CLXXXI: 9) was recovered in the filling of a silos (A0495) consisting of dirt and big to medium sized stones: the pin is curved in one third; the hole is located on the longest part, near the curve; the metal is thickened around the hole. The head of the pin appears to have been shaped in the form of an animal head, possibly bovine (0,8 cm).

Phase V

Nr.	HM no.	Ware	Color (out)	Color (in)	Color (sec)	Fabric	Decoration	Surface treatments
1	4536	PAW	5YR 7/4 pink; 2.5YR 4/6 red	5YR 7/4 pink	5YR 6/6 reddish yellow	fine, mica, sand	slip	
2	4533	PAW	7.5YR 6/3 light brown	7.5YR 6/3 light brown	7.5YR 5/4 brown	fine, mica, sand	slip	
3	4535	PAW	5YR 7/4 pink; 10R 5/6 red	5YR 7/4 pink	5YR 6/6 reddish yellow	fine, sand, limestone	slip	
4	4532	PAW	7.5YR 7/4 pink	7.5YR 7/4 pink	7.5YR 6/6 reddish yellow	fine, sand, chaff, limestone	slip	
5	4176	PAW	2.5YR 6/6 light red; 2.5YR 4/6 red	5YR 6/6 reddish yellow	5YR 6/6 reddish yellow	fine, sand, mica, lime- stone, chaff	slip	
6	5668	PAW	7.5YR 7/3 pink	7.5YR 7/3 pink	7.5YR 7/4 pink	fine, sand, mica, grit, quartz		
7	5666	PAW	7.5YR 7/3 pink; 10R 5/6 red	7.5YR 7/3 pink	7.5YR 7/4 pink	fine, sand, mica, grit, quartz	painted	
8	599	PAW	7.5YR 7/4 pink; 10R 5/8 red	7.5YR 7/4 pink	7.5YR 7/4 pink	medium-fine, mica, sand, grit	painted	smoothed
9	4179	PAW	7.5YR 7/4 pink; 2.5YR 4/6 red	7.5YR 7/4 pink	7.5YR 7/4 pink	medium-fine, mica, sand, chaff	painted	
	4184	PAW	7.5YR 6/4 light brown; 2.5YR 5/6 red	7.5YR 6/4 light brown	2.5YR 6/6 light red	fine, mica, sand, limestone	painted	
10	4182	PAW	7.5YR 6/4 light brown; 7.5YR 3/2 dark brown	7.5YR 5/3 brown	7.5YR 6/6 reddish yellow	medium-fine, mica, sand, grit	painted	
11	865	PAW	7.5YR 7/4 pink; 10R 5/6 red	7.5YR 7/4 pink	7.5YR 6/6 reddish yellow	fine, sand, grit, mica	painted	
12	4186	PAW	10YR 6/2 light brownish gray; 2.5YR 4/3 reddish brown	10YR 6/3 pale brown	10YR 6/3 pale brown	medium-fine, sand, chaff, mica, limestone	painted	burnished
	5629	PAW	10YR 7/4 very pale brown; 2.5YR 5/8 red	10YR 6/3 pale brown	7.5YR 6/3 light brown; 10YR 6/2 light brownish gray	medium, sand, mica, chaff, limestone	painted	burnished, smoothed
13	4177	PAW	7.5YR 6/4 light brown; 5YR 4/4 reddish brown	7.5YR 6/6 reddish yellow	7.5YR 6/6 reddish yellow	fine, sand, chaff, mica, limestone	painted	

Nr.	HM no.	Ware	Color (out)	Color (in)	Color (sec)	Fabric	Decoration	Surface treatments
	5663	PAW	7.5YR 7/6 reddish yellow; 2.5YR 4/4 reddish brown	7.5YR 7/6 reddish yellow	7.5YR 7/6 reddish yellow	fine, sand, chaff, limestone, mica	painted	
14	5302	PAW	7.5YR 7/4 pink; 2.5YR 4/4 reddish brown	5YR 6/6 reddish yellow	5YR 6/6 reddish yellow	medium-fine, sand, limestone, chaff, mica	painted	
15	5712	PAW	2.5YR 7/3 light reddish brown; 2.5YR 4/3 reddish brown	10YR 6/3 pale brown	10YR 6/3 pale brown	medium, sand, limestone, chaff, mica, grit	slip, painted	
16	4400	PAW	10YR 7/4 very pale brown; 2.5YR 5/6 red	10YR 7/4 very pale brown	10YR 6/2 light brownish gray	fine, mica, limestone	slip, painted	
17	5238	PAW	10YR 8/3 very pale brown; 10R 3/4 dusky red	2.5YR 7/6 light red	2.5YR 7/6 light red	fine, sand, limestone, mica	slip, painted	
18	5239	PAW	10YR 8/3 very pale brown; 10R 5/4 weak red	2.5YR 7/6 light red	2.5YR 7/6 light red	fine, sand, limestone, mica	slip, painted	
19	5240	PAW	7.5YR 7/4 pink	7.5YR 7/4 pink; 7.5YR 3/2 dark brown; 5YR 6/6 reddish yellow	7.5YR 6/4 light brown	medium, sand, grit, limestone, mica	slip, painted	smoothed, burnished
20	4564	PAW	7.5YR 7/4 pink	7.5YR 7/4 pink; 7.5YR 3/2 dark brown; 5YR 6/6 reddish yellow	7.5YR 7/4 pink	medium-fine, sand, grit, limestone, mica	slip, painted	smoothed
21	4279	PAW	7.5YR 7/3 pink; 10R 4/3 weak red	7.5YR 7/3 pink	7.5YR 7/3 pink; 7.5YR 5/1 gray	fine, sand, limestone	painted	
22	5241	PAW	7.5YR 8/3 pink	7.5YR 8/3 pink	7.5YR 7/4 pink	fine, sand, limestone, grit	slip, painted	
23	5301	PAW	10YR 7/3 very pale brown; 5YR 4/4 reddish brown	10YR 7/3 very pale brown	10YR 6/2 light brownish gray; 5YR 7/6 reddish yellow	fine, sand, limestone, mica	painted	
24	4970	PAW	10YR 8/3 very pale brown; 5YR 5/4 reddish brown	7.5YR 7/4 pink	7.5YR 7/4 pink	fine, grit, limestone, chaff	slip, painted	
25	4694	PAW	2.5YR 6/4 light reddish brown; 10R 4/6 red	7.5YR 7/4 pink	7.5YR 7/4 pink	fine, sand, mica, limestone	painted	
26	4272	PAW	7.5YR 7/3 pink; 10R 4/3 weak red	7.5YR 7/3 pink	7.5YR 7/3 pink; 7.5YR 5/1 gray	fine, sand, limestone	painted	
27	4633	PAW	7.5YR 7/4 pink; 2.5YR 6/6 light red	7.5YR 7/4 pink	7.5YR 7/4 pink	fine, sand, mica	painted	

Nr.	HM no.	Ware	Color (out)	Color (in)	Color (sec)	Fabric	Decoration	Surface treatments
28	5665	PAW	2.5YR 7/6 light red; 10YR 5/8 yellowish brown	2.5YR 7/6 light red	2.5YR 7/6 light red	fine, sand, mica, limestone	painted	
29	4178	PAW	7.5YR 7/3 pink; 2.5YR 4/6 red	7.5YR 7/4 pink	5YR 6/6 reddish yellow	fine, sand, mica, chaff, limestone	slip, painted	
30	4181	PAW	2.5Y 8/3 pale brown; 10R 4/3 weak red	5YR 6/6 reddish yellow	5YR 6/6 reddish yellow	fine, sand, limestone, mica, chaff	slip, painted	
31	4183	PAW	7.5YR 7/4 pink; 2.5YR 4/6 yellowish red	7.5YR 7/4 pink	7.5YR 7/4 pink	fine, sand, mica, limestone	painted	smoothed
32	5236	IW	7.5YR 7/4 pink; 2.5YR 5/4 reddish brown	2.5YR 5/4 reddish brown	7.5YR 6/3 light brown	fine, sand, mica	slip, incised	
33	5343	IW	5YR 6/6 reddish yellow; 10R 4/6 red	5YR 6/6 reddish yellow; 10R 4/6 red to 10R 3/4 dusky red; 2.5YR 6/8 light red	5YR 6/6 reddish yellow	fine, sand, mica	slip, incised	
34	4538	IW	5YR 6/6 reddish yellow; 2.5YR 5/6 red	5YR 6/6 reddish yellow	7.5YR 6/6 reddish yellow	fine, mica, limestone	molded, slip	
35	4539	IW	2.5YR 7/6 light red	2.5YR 7/6 light red	5YR 7/6 reddish yellow	fine, sand	slip, incised	
36	4540	IW	5YR 7/6 reddish yellow	5YR 7/6 reddish yellow	5YR 7/6 reddish yellow	fine, mica, chaff	slip, incised	
37	4443	IW	5YR 7/6 reddish yellow	5YR 7/6 reddish yellow	5YR 7/6 reddish yellow	fine, sand, mica	slip, incised	
38	4568	GLW	GLE Y 2 7/1 10B light bluish gray	GLE Y 2 7/1 10B light bluish gray	7.5YR 8/4 pink	medium-fine, sand	glazed	
39	6574	GLW	GLE Y 1 5/2 5G_ /2 grayish green	GLE Y 1 5/2 5G_ /2 grayish green; 2.5Y 8/2 pale brown	2.5Y 8/4 pale brown	medium, sand, mica	glazed	
40	4992	COMW	7.5YR 7/3 pink	7.5YR 7/3 pink	5YR 6/6 reddish yellow	fine, sand, mica, limestone, chaff		
41	5222	COMW	2.5YR 5/4 reddish brown; 7.5YR 7/4 pink	7.5YR 6/4 light brown	7.5YR 6/6 reddish yellow	fine, mica, chaff	slip	
42	5664	COMW	5YR 6/4 light reddish brown	5YR 6/4 light reddish brown	5YR 6/4 light reddish brown	fine, sand, mica		
43	5303	COMW	5YR 6/6 reddish yellow	5YR 6/6 reddish yellow	5YR 6/6 reddish yellow	fine, sand, mica		

Nr.	HM no.	Ware	Color (out)	Color (in)	Color (sec)	Fabric	Decoration	Surface treatments
44	5304	COMW	5YR 6/6 reddish yellow	5YR 6/6 reddish yellow	5YR 6/6 reddish yellow	fine, sand, mica		
45	5235	COMW	7.5YR 7/6 reddish yellow	7.5YR 7/4 pink	5YR 6/6 reddish yellow	fine, sand, mica, grit	slip	
46	5667	COMW	7.5YR 6/4 light brown	7.5YR 7/4 pink	7.5YR 7/4 pink	fine, sand, mica, chaff, limestone		
47	5237	COMW	5YR 6/6 reddish yellow	5YR 6/6 reddish yellow	5YR 7/6 reddish yellow	fine, sand, limestone		
48	5048	COMW	10YR 8/2 very pale brown; 7.5YR 7/3 pink	5YR 7/4 pink	5YR 6/6 reddish yellow; 5YR 6/2 pinkish gray	medium-fine, sand, limestone, chaff, mica	slip	
49	4101	COMW	7.5YR 6/4 light brown	7.5YR 6/4 light brown	5YR 6/6 reddish yellow	medium-fine, sand, mica, limestone, chaff	slip	
50	4936	COMW	2.5Y 8/2 pale brown; 7.5YR 8/2 pinkish white	7.5YR 7/4 pink	7.5YR 7/4 pink	medium, sand, grit, chaff, mica	slip	
51	2774	COMW	10YR 8/3 very pale brown	7.5YR 7/4 pink	5YR 7/4 pink; 10YR 6/2 light brownish gray	medium, sand, limestone, grit	slip, incised, applied	
52	4259	COMW	7.5YR 6/6 reddish yellow	7.5YR 5/1 gray	7.5YR 6/3 light brown	medium-fine, sand, grit, mica		
53	4304	COMW	7.5YR 7/4 pink	7.5YR 7/4 pink	7.5YR 5/3 brown	medium, sand, grit, limestone, mica	incised, applied	
54	4988	COMW	5YR 7/4 pink	5YR 7/4 pink	5YR 7/6 reddish yellow	fine, mica, chaff, sand		
55	4263	COMW	5YR 6/6 reddish yellow	5YR 6/6 reddish yellow	7.5YR 5/6 strong brown	medium, sand, grit, mica		
56	4905	COMW	7.5YR 7/4 pink	7.5YR 7/4 pink	5YR 6/6 reddish yellow	medium, sand, grit, limestone, mica		
57	5228	COMW	5YR 7/4 pink	5YR 7/4 pink	10YR 7/4 pink	medium, sand, limestone, mica	slip	
58	4987	COMW	5YR 6/6 reddish yellow	5YR 6/6 reddish yellow	5YR 6/6 reddish yellow	fine, mica, chaff, sand		
59	5229	COMW	10YR 8/3 very pale brown	7.5YR 7/4 pink	5YR 6/6 reddish yellow	fine, sand, mica, limestone	slip	
60	4565	COMW	7.5YR 6/4 light brown	5YR 6/6 reddish yellow	2.5YR 6/6 light red	medium, sand, limestone		polished
	4566	COMW	7.5YR 6/4 light brown	5YR 6/6 reddish yellow	2.5YR 6/6 light red	medium, limestone, sand		polished

Nr.	HM no.	Ware	Color (out)	Color (in)	Color (sec)	Fabric	Decoration	Surface treatments
61	5711	COMW	2.5YR 7/3 light reddish brown	2.5YR 7/3 light reddish brown	10YR 6/3 pale brown	medium, sand, limestone, mica, grit	slip	
62	4527	COMW	10YR 8/2 very pale brown	10YR 8/2 very pale brown	2.5YR 7/6 light red	fine, mica, sand, limestone	slip	
63	5219	COMW	10R 5/6 red	5YR 7/4 pink	5YR 6/4 light reddish brown	medium, sand, mica, limestone	slip	
64	4526	COMW	10YR 8/3 very pale brown	10YR 7/4 very pale brown	10YR 7/4 very pale brown	medium-fine, sand, limestone	slip	
65	4110	COMW	7.5YR 7/4 pink	5YR 6/4 light reddish brown	5YR 6/4 light reddish brown	medium-fine, sand, limestone, mica		smoothed
66	5004	COMW	5YR 6/6 reddish yellow	5YR 6/6 reddish yellow	5YR 6/6 reddish yellow	fine, mica, chaff, sand		
67	5296	COMW	5YR 6/6 reddish yellow	5YR 6/6 reddish yellow	5YR 6/6 reddish yellow	medium-fine, sand, limestone, chaff, mica		
68	5293	COMW	10YR 7/3 very pale brown	10YR 7/3 very pale brown	10YR 6/2 light brownish gray; 5YR 7/6 reddish yellow	medium-fine, chaff, sand, mica, limestone		
69	4924	COMW	7.5YR 7/4 pink	7.5YR 7/4 pink	7.5YR 7/4 pink	fine, grit, mica		
70	4424	COMW	7.5YR 6/3	5YR 6/3 light reddish brown	5YR 6/3 light reddish brown	fine, mica, sand		
71	4425	COMW	5YR 6/6 reddish yellow	5YR 6/6 reddish yellow	5YR 6/6 reddish yellow	medium, sand, chaff, limestone	incised	
72	5247	COMW	10YR 7/3 very pale brown	7.5YR 8/4 pink	5YR 7/6 reddish yellow	medium, sand, chaff, limestone, mica	slip	
73	5248	COMW	10YR 8/3 very pale brown	10YR 8/3 very pale brown	5YR 7/6 reddish yellow	fine, sand, limestone, mica	slip	
74	1210	COMW	10YR 7/4 very pale brown	5YR 7/4 pink	5YR 7/4 pink	medium-fine, sand, limestone, mica		
75	4420	COMW	2.5YR 7/6 light red	7.5YR 6/3 light brown	7.5YR 6/3 light brown	fine, mica		
76	4141	COMW	5YR 7/4 pink	7.5YR 7/4 pink	2.5YR 6/6 light red	fine, mica, sand, limestone		

Plate CXI

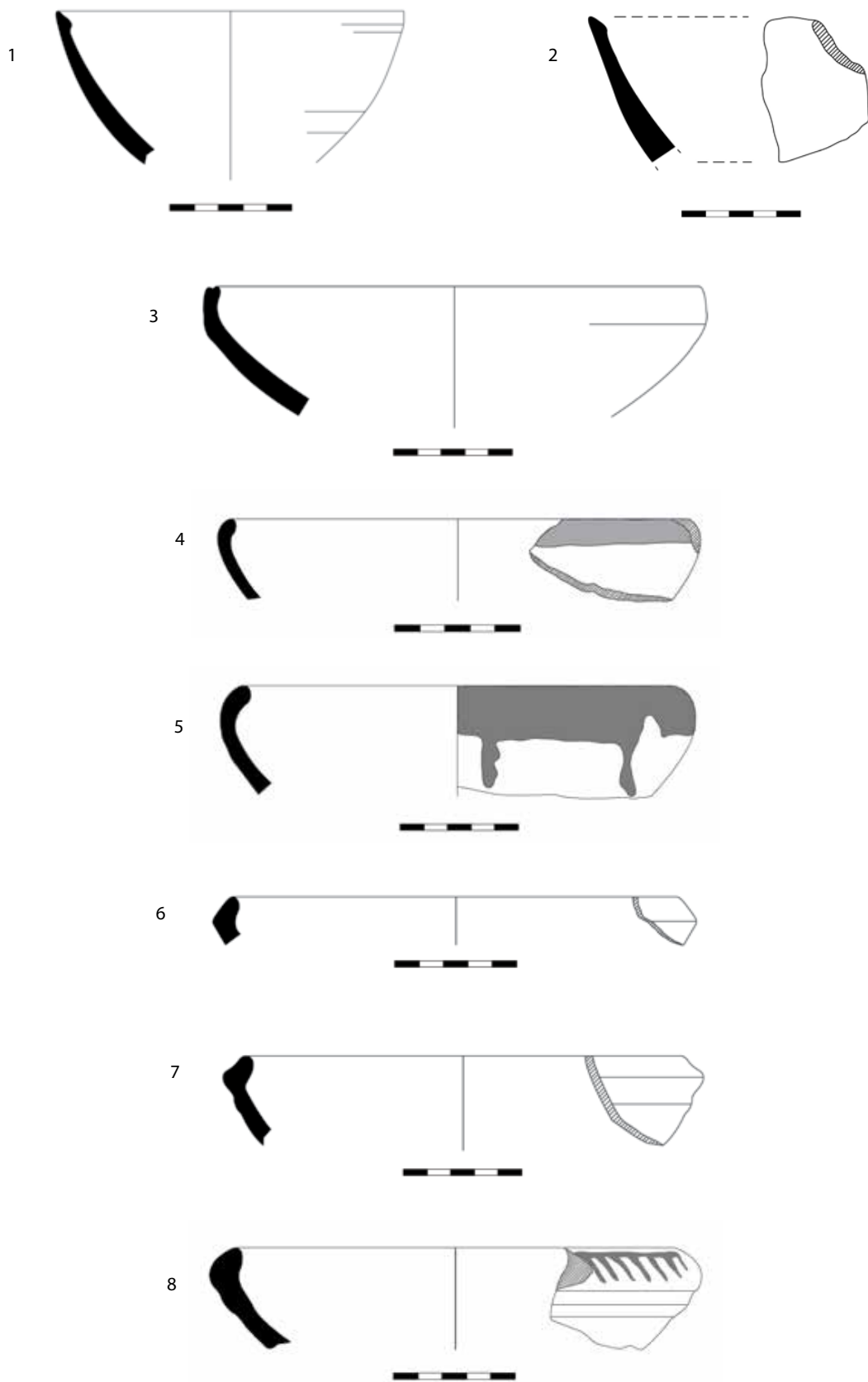


Plate CXII

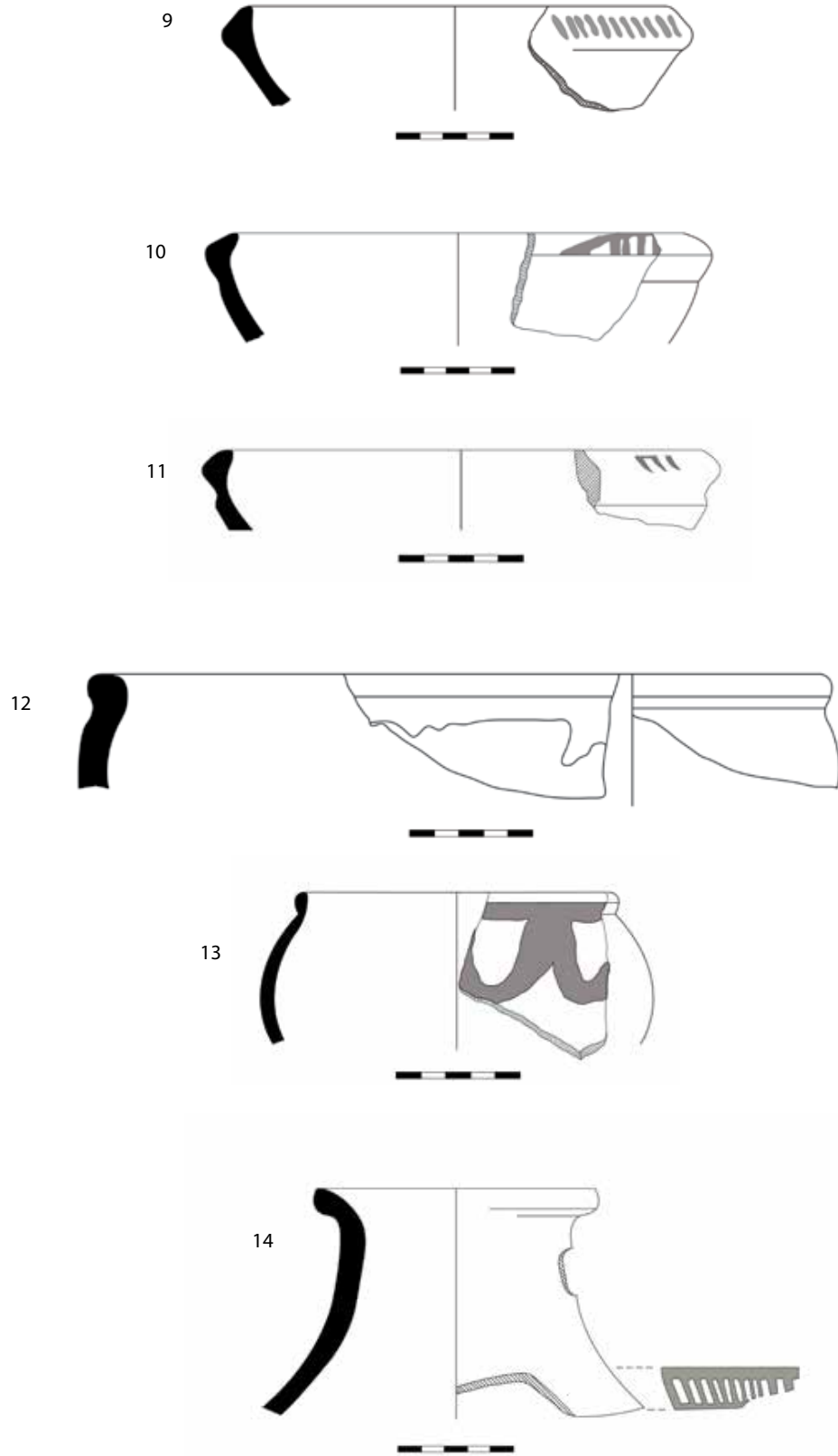


Plate CXIII

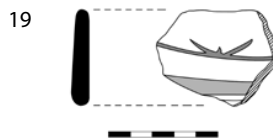
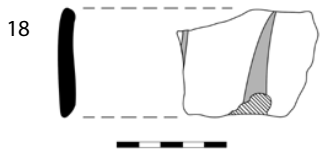
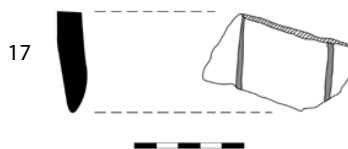
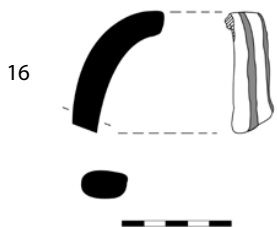
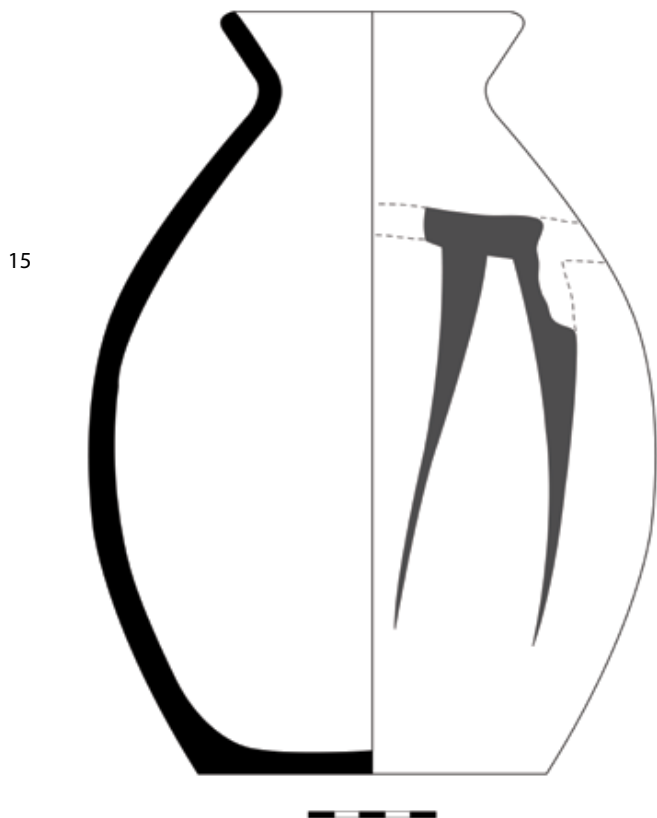


Plate CXIV

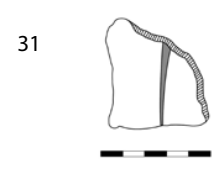
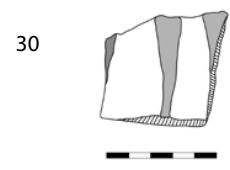
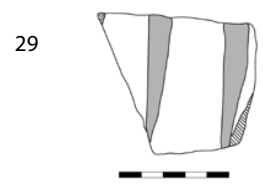
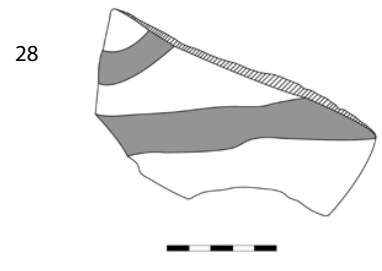
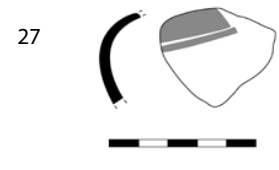
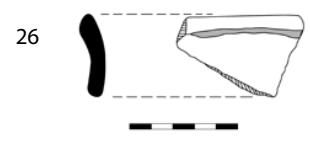
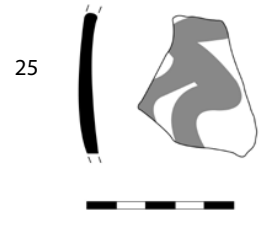
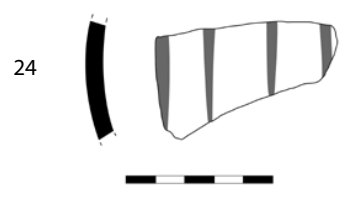
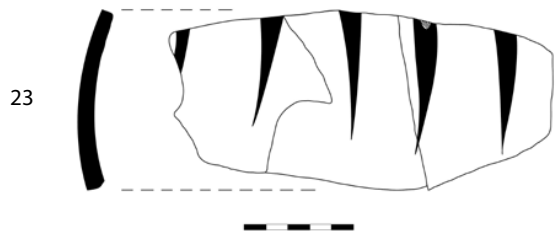
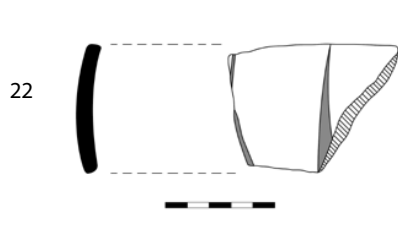
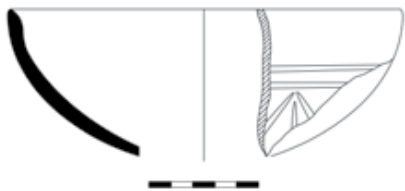
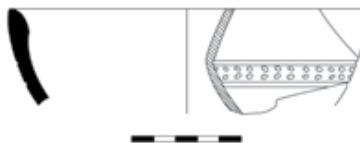


Plate CXV

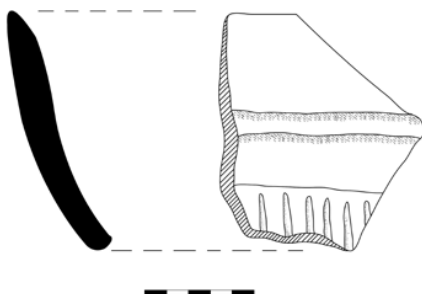
32



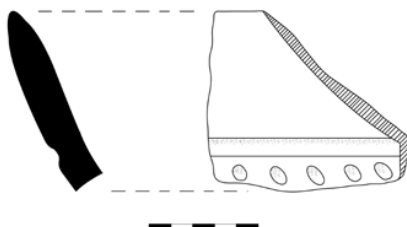
33



34



35



36

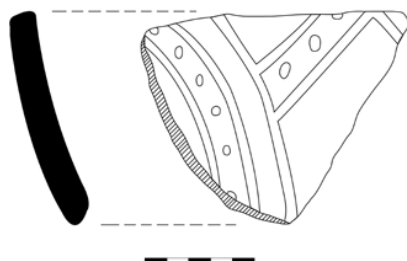


Plate CXVI

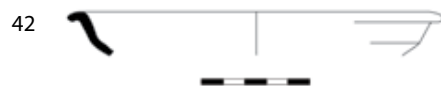
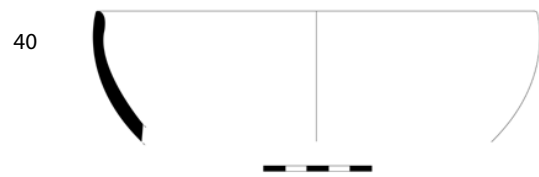
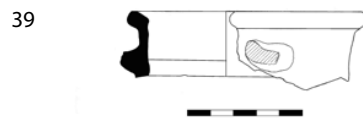
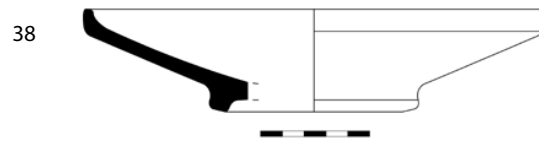
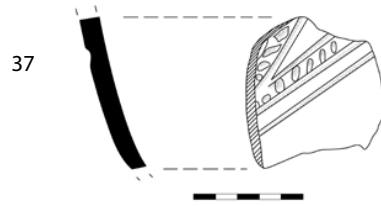


Plate CXVII

45



46



47



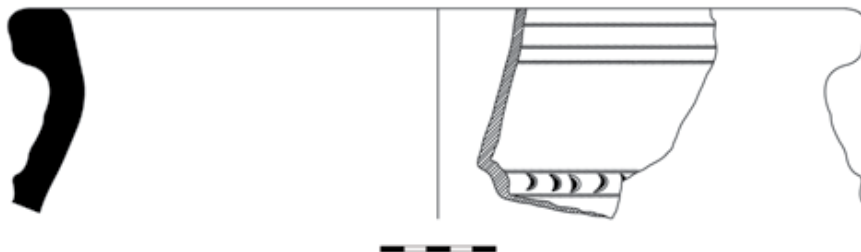
48



49



50



51

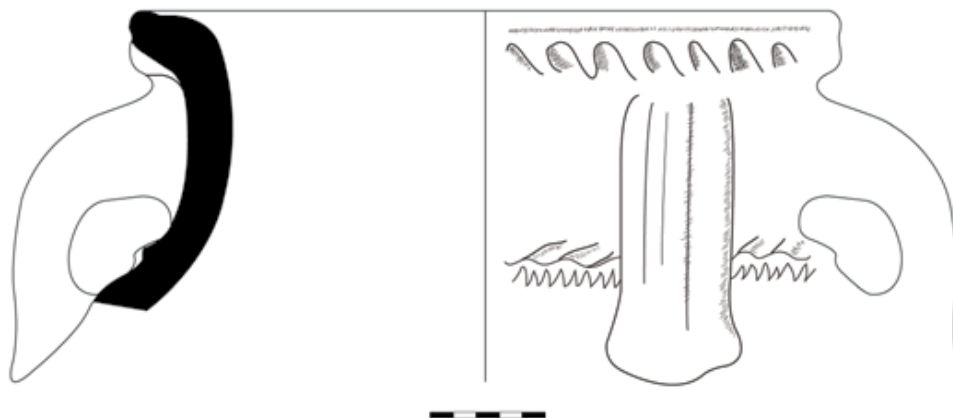


Plate CXVIII

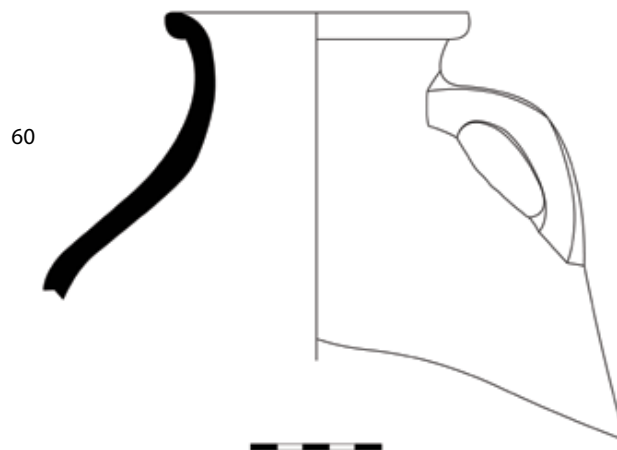
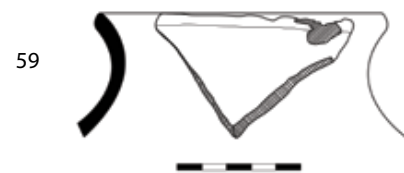
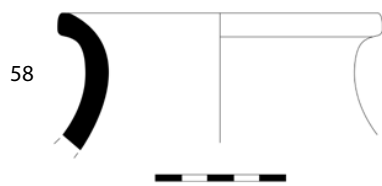
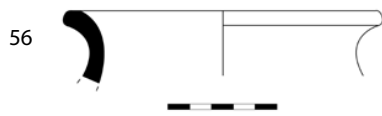
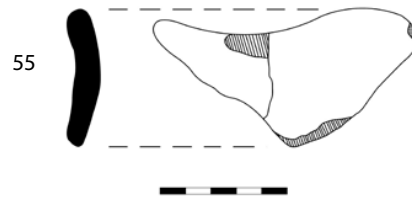
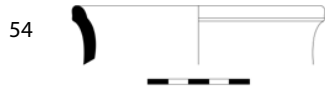
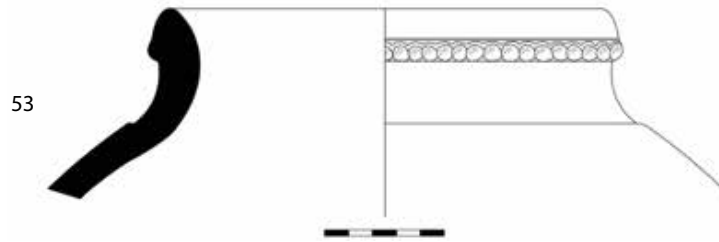
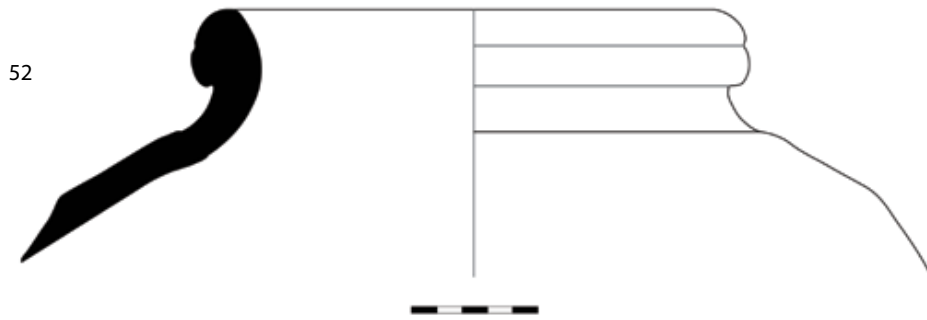


Plate CXIX

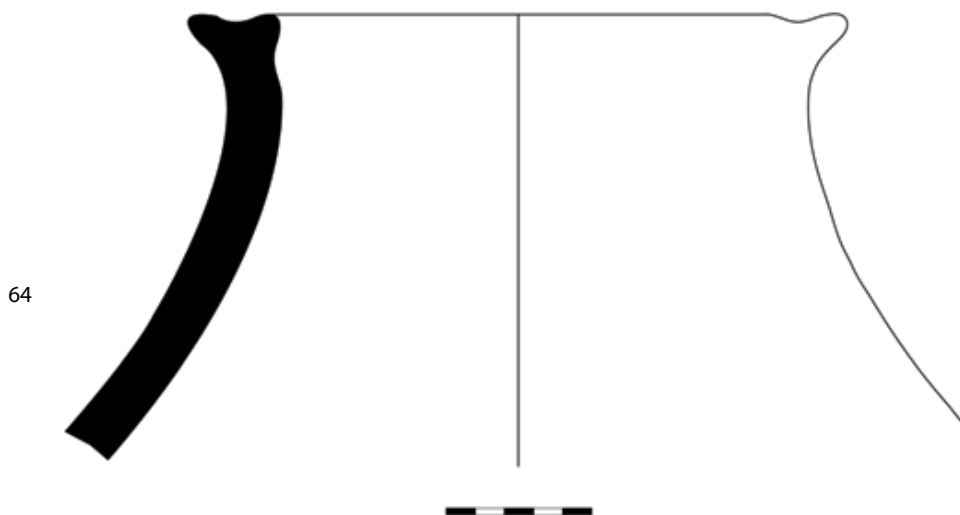
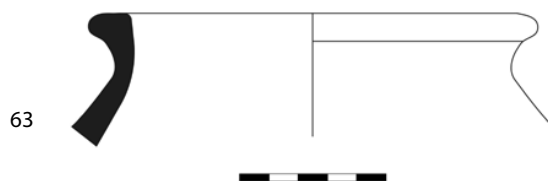
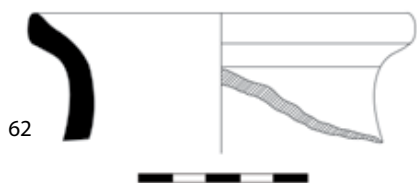
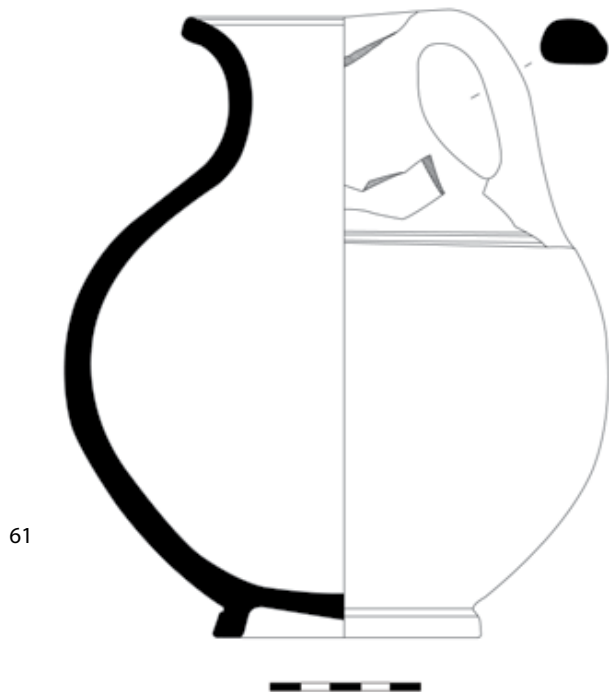


Plate CXX

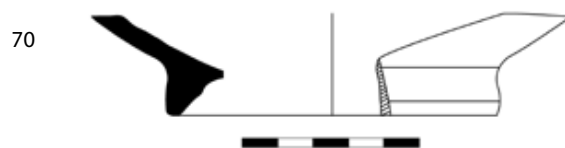
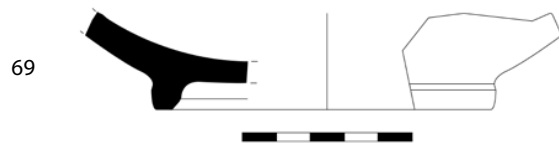
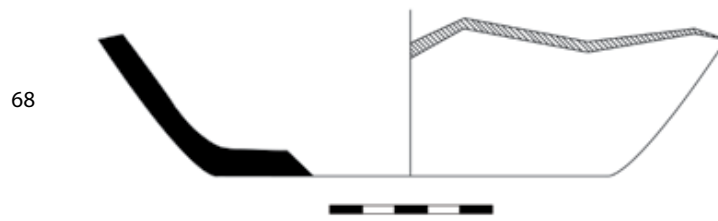
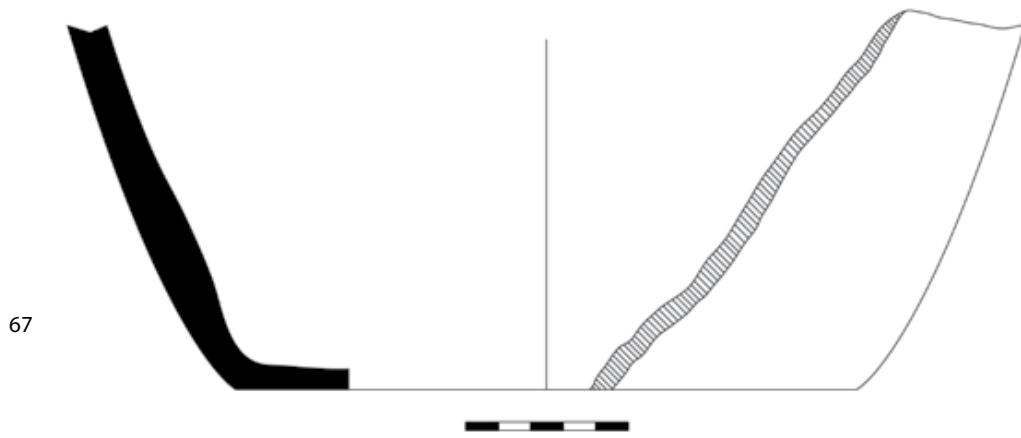
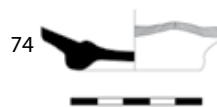


Plate CXXI



Phase V

Nr.	HM no.	Description	Material	Color	Color (sec)	Decorations	Ht	Lg	Th	Wh	Wt	D1	D2	Notes
1	2954	Necklace	glass, stone, bone, faience, black stone, shell	blu; white; black; red			0	0	0	0	0	0	0	Forty-four beads of a necklace found in a burial together with a couple of earrings (HM 2944 - HM 2945) and two beads of another necklace (HM 2953). Variable dimensions from 1.5 to 0.5 cm.
2	2953	Necklace	glass	gray			0	0	0	0	0	0	0	Two glass beads part of a necklace found inside an Iron age burial Similar to HM 2954. Dimensions: bead1 H 1 x D 0.8 - bead2 H 0.6 x D 0.5.
3	5267	Bead	faience	gray	gray		0	0	0	0	0	1,2	0,4	
4	5309	Bead	glass	white	white		0	0	0	0	0	1,9	0,2	
5	5396	Bead	glass	white	white		0	1	0	0,5	0	0	0	
6	5402	Bead	faience	light blue	white		0	0	0	0	0	0,9	0,3	Bead with ridges.

Nr.	HM no.	Description	Material	Color	Color (sec)	Decorations	Ht	Lg	Th	Wh	Wt	D1	D2	Notes
7	2944	Earring	bronze	greenish			2,5	0	0,1	1,8	0	0	0	Earring with a quarter moon shaped lower part. The post is made of a wire that is secured through a hook inside the closing hoop. The hoop is formed by a wire that is twisted two times around its base. Pair with HM 2945.
8	2945	Earring	bronze	greenish			2,1	0	0,1	1,8	0	0	0	Bronze earring in a quarter moon shape. The post has an angular shape and does not end in a hook necessary to secure it to the hoop. The hoop is formed by a wire that is twisted two times around its base. Pair with HM 2944.
9	2952	Pin	iron	greenish			0	13,4	0,3	0	0	0	0	Curved at one third of its length. The hole is located on the longest part, near the curve. The metal is thickened around the hole. The head of the pin appears to have been shaped in the form of an animal (bovine) head (0.8 cm).

Nr.	HM no.	Description	Material	Color	Color (sec)	Decorations	Ht	Lg	Th	Wh	Wt	D1	D2	Notes
10	2947	Crucible	clay	light brown	yellow		5	11	0	8	0	0	0	Crucible with copper/bronze residues.
11	2773	Crucible	clay	reddish yellow; gray			10	0	1	0	0	12	10	
12	2760	Pestle	stone	dark gray	gray		4,7	0	2,5	5	0	0	0	Fragmented stone pestle.
13	941	Weight	stone	light gray	light gray		0	0	5,3	0	0	14	4,3	
14	932	Loom weight	stone	white	white		0	0	2,8	0	54	0	5,3	Half preserved.
15	2755	Loom weight	stone	whitish yellow			3,8	5,3	0	4,5	133	1,6	0	
16	2918	Loom weight	clay	light brown	light brown		2,2	4	0	0	0	0	0	
17	2919	Loom weight	clay	light brown	light brown		0	0	0	0	0	4,6	0	
18	2920	Loom weight	clay	light brown	light brown		3,5	4,5	0	4,1	0	0	0	
19	2921	Loom weight	clay	light brown	light brown		2,9	6,1	0	5,1	0	0	0	
20	2922	Loom weight	clay	light brown	light brown		4	0	0	0	0	4,4	0	
21	2923	Loom weight	clay	light brown	light brown		3,6	5	0	0	0	0	0	
22	2924	Loom weight	clay	light brown	light brown		3,8	0	0	0	0	4,9	0	
23	2925	Loom weight	clay	light brown	light brown		5,4	0	0	0	0	6	0	
24	2926	Loom weight	clay	light brown	light brown		3	4,8	0	0	0	0	0	
25	2927	Loom weight	clay	light brown	light brown		2,5	4,6	0	4,4	0	0	0	
26	2929	Loom weight	clay	light brown	light brown		4,2	5,5	0	4,9	0	0	0	
27	2936	Loom weight	clay	light brown	light brown		3,7	0	0	0	0	4,7	0	
28	2938	Loom weight	clay	light brown	light brown		3,6	0	0	0	0	6	0	

Plate CLXXXI

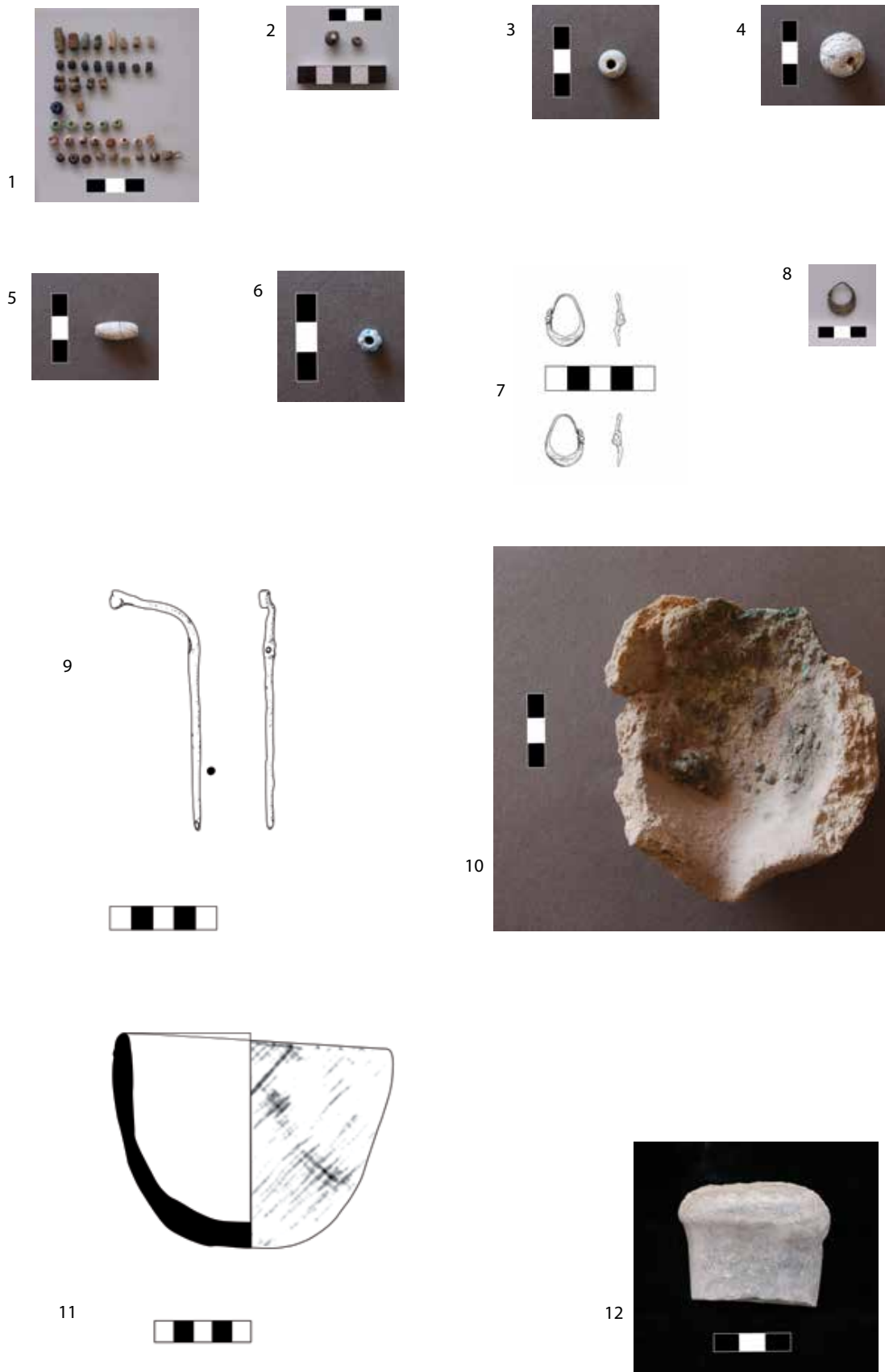


Plate CLXXXII

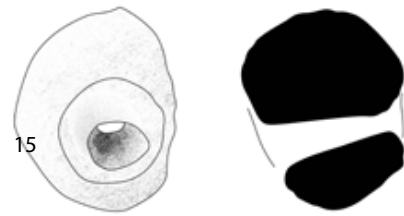
13



14



15



16



17



18



19



20



21



22



23



24



Plate CLXXXIII

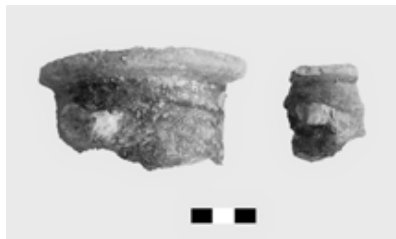


Plate CXCVIII

Phase V



Ware:PAW



Ware:GLW