

ARTICLE

DOI: 10.1038/s41467-017-02069-z

OPEN

Induced unconventional superconductivity on the surface states of Bi_2Te_3 topological insulator

Sophie Charpentier¹, Luca Galletti¹, Gunta Kunakova^{1,2}, Riccardo Arpaia¹, Yuxin Song^{1,3}, Reza Baghdadi¹, Shu Min Wang^{1,3}, Alexei Kalaboukhov¹, Eva Olsson⁴, Francesco Tafuri^{5,6}, Dmitry Golubev⁷, Jacob Linder⁸, Thilo Bauch¹ & Floriana Lombardi¹

Topological superconductivity is central to a variety of novel phenomena involving the interplay between topologically ordered phases and broken-symmetry states. The key ingredient is an unconventional order parameter, with an orbital component containing a chiral $p_x + ip_y$ wave term. Here we present phase-sensitive measurements, based on the quantum interference in nanoscale Josephson junctions, realized by using Bi_2Te_3 topological insulator. We demonstrate that the induced superconductivity is unconventional and consistent with a sign-changing order parameter, such as a chiral $p_x + ip_y$ component. The magnetic field pattern of the junctions shows a dip at zero externally applied magnetic field, which is an incontrovertible signature of the simultaneous existence of 0 and π coupling within the junction, inherent to a non trivial order parameter phase. The nano-textured morphology of the Bi_2Te_3 flakes, and the dramatic role played by thermal strain are the surprising key factors for the display of an unconventional induced order parameter.

¹Department of Microtechnology and Nanoscience, Chalmers University of Technology, SE-41296 Göteborg, Sweden. ²Institute of Chemical Physics, University of Latvia 19 Raina Boulevard, LV-1586 Riga, Latvia. ³Shanghai Institute of Microsystem and Information Technology, Chinese Academy of Sciences, 865 Changning Road, Shanghai CN-200050 China. ⁴Department of Applied Physics, Chalmers University of Technology, SE-41296 Göteborg, Sweden. ⁵Dipartimento di Fisica E. Pancini, Università di Napoli Federico II, IT-80126 Napoli, Italy. ⁶CNR-SPIN Institute of Superconductors, Innovative Materials and Devices, Napoli IT-80125, Italy. ⁷Department of Applied Physics, Aalto University School of Science P.O. Box 13500, FI-00076 Aalto, Finland. ⁸Department of Physics, QuSpin Center of Excellence, Norwegian University of Science and Technology, N-7491 Trondheim, Norway. S. Charpentier and L. Galletti contributed equally to this work. Correspondence and requests for materials should be addressed to F.L. (email: floriana.lombardi@chalmers.se)

The notion of superconducting materials with fully gapped order parameters, but that still support topologically protected surface states^{1–5}, including Majorana bound states^{2,3}, are currently subject to much attention. Such systems intertwine two key paradigms in condensed matter physics, namely spontaneous symmetry breaking and topology, which has been predicted to cause unusual quantum phenomena with even direct analogies to concepts in high-energy physics, such as axion couplings⁶. This novel physics has been recently predicted to occur also in systems where the superconducting phenomenon involves topological Dirac electrons and it can be induced by the proximity with a conventional superconductor.

Heterostructures involving a conventional superconductor (S) and an exotic conductor, represented by the surface of a three-dimensional (3D) topological insulator (TI) and the edge states of two-dimensional quantum wells^{12,13}, are ideal systems to emulate topological superconductivity. In the pioneering work by Fu and Kane¹, the superconductivity induced in the surface states of a 3D TI is described, in a basis where the operators acquire a phase factor, by an order parameter (OP) that resembles a spinless chiral $p_x + ip_y$ (p) but does not break time-reversal symmetry. In a subsequent work, Tkatchov et al.¹⁴ have derived, this time in a canonical operator basis, that the induced superconductivity has an orbital term of the type $p + s$ -wave with the p part, consisting of conventional chiral $p_x + ip_y$ and $p_x - ip_y$, that sums up with the s -wave term through Pauli matrices to form the total superconducting order parameter.

It is clear that the first step that must be taken to unveil the rich variety of the predicted phenomena related to topological superconductivity is to clearly demonstrate the unconventional nature of the OP, which identifies in a chiral $p_x + ip_y$ (p -wave) orbital term. In compounds like the Sr_2RuO_4 layered perovskite, for example, considered the archetype of a topological superconductor, the existence of a chiral $p_x + ip_y$ wave orbital order, with a nontrivial internal phase, is still not generally accepted¹⁵. The appearance of Majorana fermions and topological quantum computation are fundamentally encoded in the properties of such p -wave superconductivity.

Josephson interferometry emerges as a crucial tool to show key features of the superconductivity involving topological Dirac electrons, as for instance supercurrents induced in the helical edge states of $\text{HgTe}/\text{HgCdTe}$ ¹² and InAs/GaSb ¹³ 2D TI quantum wells. The helical metallic surface states of 3D TI, probed by Josephson interferometry have shown, up to now, a mostly conventional induced superconductivity. Here the Josephson transport has been demonstrated to be ballistic^{8,10} and uniquely associated with the helical surface states¹⁶ which rules out a contribution from the disordered bulk^{8,10}. However, no other signatures have been observed. The reports on a skewed Josephson current phase relation could not be clearly discriminated if due to a conventional high transparency barrier in S-3DTI-S junctions¹⁷ or to the peculiar bound state spectrum of the surface helical metal^{11,14} possibly hosting Majorana fermions.

Our experiment is a decisive step along this line. We have realized hybrid devices based on a 3D TI, where the nanostructured morphology of the topological insulator flakes makes the measurement of the Josephson effect sensitive to the interface unconventional order parameter symmetry. By using the same path and notions previously employed to prove the d -wave OP in high critical temperature superconductors^{18,19} (HTS) we have measured an unconventional magnetic field pattern of the Josephson current, with a dip at zero magnetic field. We demonstrate that this is the incontrovertible code of a Cooper pair tunneling process probing an OP with a non-trivial internal phase.

Results

Unconventional magnetic field patterns in Al-Bi₂Te₃-Al Josephson junctions. Al-3DTI-Al Josephson junctions (Fig. 1a) have been realized using Bi₂Te₃ flakes from epitaxial thin films. By varying the interface transparency D , from a value close to 1 to the tunneling limit ($D \ll 1$) we have been able to show that the surface states of Bi₂Te₃ host an induced OP with a non trivial phase compatible with a chiral p -wave. Figure 1b shows the nanostructured morphology of the flakes. We observe

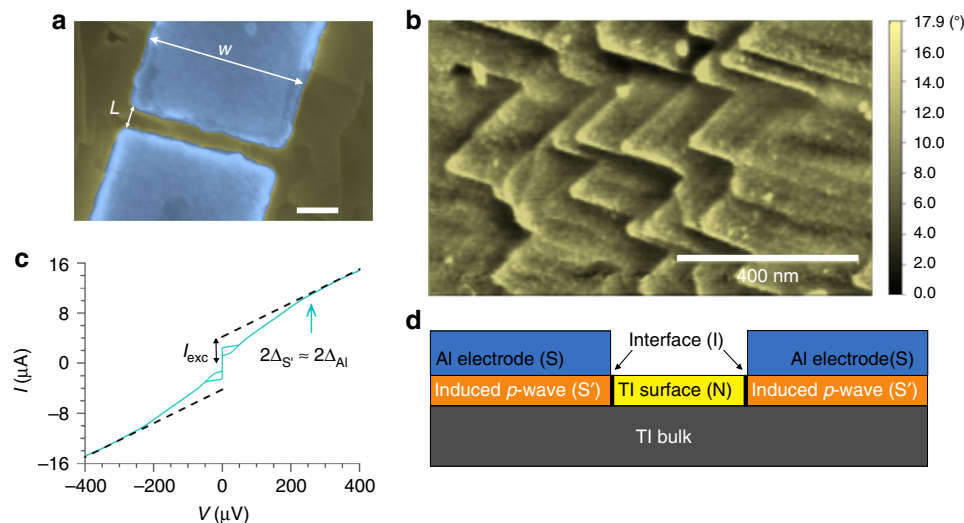


Fig. 1 Morphological and transport characterization of a typical proximity based Bi₂Te₃ Josephson junction. **a** Scanning electron microscope image of a junction made using an exfoliated flake. The light blue areas define the Al/Pt electrodes while the Bi₂Te₃ flake is shown in yellow. Scale bar: 200 nm. **b** Atomic force microscope image of a Bi₂Te₃ thin film grown on GaAs substrate showing a typical growth with aligned pyramidal domains. Scale bar: 400 nm. **c** IVC of a typical junction ($w = 1 \mu\text{m}$, $L = 200 \text{ nm}$) measured at 20 mK (cyan). The resistive branch shows a neat change of slope at a voltage $V \approx 260 \mu\text{V}$ (cyan arrow) that corresponds to $2\Delta_{\text{Al}}$ for the thickness of the electrodes²². The black arrow indicates the value of the extracted excess current. **d** Cross section schematics of the effective device under consideration. The transport properties can be assimilated to those of a S'INIS' Josephson junction where S' represents the induced superconductor in the Bi₂Te₃

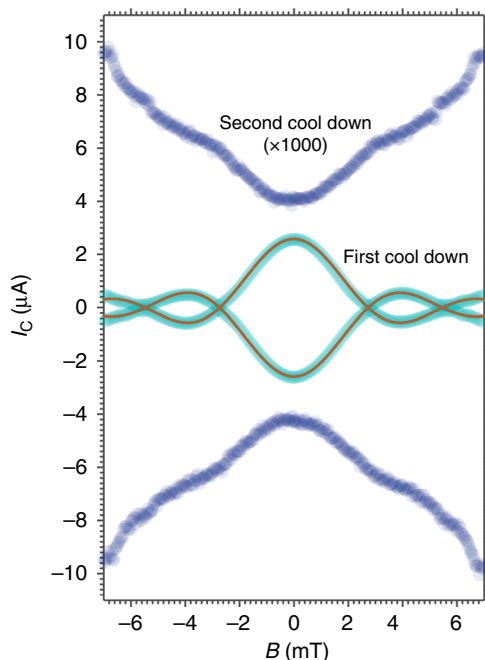


Fig. 2 Magnetic field pattern of a typical junction before and after the thermal cycle. Critical current I_C dependence on the externally applied magnetic field B for the junction of Fig. 1c at 20 mK, before (cyan) and after (blue) the thermal cycle. At the first cool down the $I_C(B)$ dependence shows a conventional Fraunhofer dependence fitted with the expression $I_C(B) = I_C(0) |\sin(\pi\phi/\phi_0)| / (\pi\phi/\phi_0)$ (red line) where $I_C(0)$ is the critical current at zero field, ϕ_0 is the flux quantum, and $\phi = BA_{\text{eff}}$ is the flux through the junction, being A_{eff} the effective area. After the thermal cycle (blue points), the critical current is dramatically reduced (the data points are multiplied by a factor 1000 for clarity), and a dip at $B = 0$ appears

characteristic pyramidal domains (see Methods section) with a prevailing single domain, which points towards thin films without twin boundaries²⁰.

Figure 1c shows the current voltage characteristic (IVC) of a typical junction at the first cool down, measured at base temperature of 20 mK in a dilution refrigerator. The curve presents 50% hysteresis and a large excess current I_{exc} , defined as the extrapolation at zero voltage of the IVC above the Al gap, Δ_{Al} . This value can be higher than the Josephson current for high transparent interfaces²¹ as we generally find for our devices. We will assume that the junctions can be assimilated to S'INIS' structures where S' is the effective fully gapped $p+s$ -wave superconductor¹⁴, N is the Bi_2Te_3 Dirac metal channel and I the interface barrier (Fig. 1d). The induced gap in S' will define the maximum $I_C R_N$ product where I_C represents the maximum Josephson current and R_N the normal resistance of the junction. For the IVC of Fig. 1c, we get an $I_C R_N \approx 100 \mu\text{V}$ indicating an induced gap close to that of the Al²². This is further supported by the high value of the transparency D we extract from the IVC. Specifically from the value $eI_{\text{exc}}R_N/\Delta_{S'}$, with $\Delta_{S'} \approx \Delta_{\text{Al}}$, we can extrapolate the value of the barrier transparency $D \approx 0.8$ ²¹.

Figure 2 shows the magnetic field dependence of the Josephson current for the same junction as in Fig. 1c. We observe an ideal Fraunhofer pattern with clear secondary lobes (cyan circles). From the modulation period $\Delta B = \phi_0/A_{\text{eff}} \approx 2.5$ mT, where ϕ_0 is the superconducting flux quantum, we extract an effective area A_{eff} of $0.75 \mu\text{m}^2$. This value is very close (within few %) to the numerically calculated effective area, by assuming a 2π periodic current phase relation (Supplementary Note 1). This has been verified for several junctions on various chips, which confirms a

conventional magnetic field behavior of the devices in agreement with the theoretical predictions²³ and various experimental reports²⁴, while in contrast with the anomalies stated in earlier works²⁵.

After thermal cycling (from base temperature to 300 K and back to base temperature) the transport properties of all devices undergo a dramatic change. The critical current of the junctions is, for most devices, reduced by more than two orders of magnitude (Fig. 2) while the normal resistance increased by a factor between 1.1 and 6 (Table 1).

We shall argue that this phenomenology is related to the dramatic role played by strain to tune the interquintuple layers interaction and therefore the topological phase in TIs. First principle calculations^{26,27} have shown that the consequence of a tensile strain (out of plane compression) is a shift of the Dirac point closer to the valence band while a compressive strain (out of plane expansion) leads to a gap opening at the Dirac point²⁶. Strain is usually generated during the epitaxial growth of the material on the substrate, with lattice parameters different from those of the topological insulator. Recent reports have shown the tunability of the Dirac point by strain in thin topological crystalline insulator SnTe ²⁸ and at grain boundaries in Bi_2Se_3 thin films²⁹.

Our experiment is quite different: exfoliated Bi_2Te_3 flakes are transferred to a SiO_2/Si substrate, so a possible strain-related phenomenology cannot be attributed to the growth process. The strain instead is related to the huge difference in the thermal expansion coefficient of Bi_2Te_3 ($\sim 13.4 \times 10^{-6} \text{ }^\circ\text{C}^{-1}$) and that of the SiO_2/Si substrate ($0.5 \times 10^{-6} \text{ }^\circ\text{C}^{-1}/2.4 \times 10^{-6} \text{ }^\circ\text{C}^{-1}$). The flake will experience this difference by the clamping to the substrate, through the patterning of the Al electrodes forming a nanometer sized gap junction. During the warming up of the sample the Bi_2Te_3 flake at the nanogap undergoes a compressive strain inducing plastic deformation that leads to a buckling of the Bi_2Te_3 channel forming the nanogap upon a subsequent cool down³⁰. Figure 3 shows a SEM picture of a junction after cycling; a typical buckling feature appears in the nanogap (Supplementary Note 3).

Plastic deformations at the nanochannel can substantially affect the Josephson properties. The opening of a gap at the Dirac node, which can eventually reach the bulk gap²⁶, works as a tunneling barrier reducing the Josephson current as we observe in our experiment. The physics behind this reduction is that the opening of a gap at the Dirac node causes current-carrying surface states beneath the Al electrodes to become evanescent waves in the TI nanogap region, which thus decay over a shorter distance than in the gapless case and thus reduces the critical current.

For the devices, which undergo the most dramatic changes in the Josephson current, the value of the I_{exc} is zero, signifying a very low transparency. However for these samples the most striking experimental observation is the inverted Josephson magnetic field pattern that appears after thermal cycling (Fig. 2 (blue points) and Fig. 4a, see also Supplementary Fig. 2, and Supplementary Note 2).

Discussion

Our results are consistent with a proximity-induced superconductivity in the TI surface states compatible with a $p+s$ OP which contains a chiral p -wave term. Let us now focus on the effect of the interface transparency on the chiral p -wave part of the $p+s$ OP. Self-consistent calculations have shown that the transparency of the interface can have a dramatic effect on a chiral $p_x + ip_y$ wave OP. For highly transparent interfaces, both the p_x and p_y component of OP gap are equally suppressed at the

Table 1 Relevant parameters for all the measured devices before and after the thermal cycle

| Device | I_C^{before} (μA) | I_C^{after} (μA) | R_N^{before} (Ω) | R_N^{after} (Ω) | $I_C R_N^{\text{before}}$ (μeV) | $I_C R_N^{\text{after}}$ (μeV) | w (μm) | L (nm) | $\frac{I_C^{\text{after}}}{I_C^{\text{before}}}$ | $\frac{R_N^{\text{after}}}{R_N^{\text{before}}}$ |
|--------|--|---|---------------------------------------|--------------------------------------|---|--|--------------------------|-------------|--|--|
| JM10 | 2.6 | 0.002 | 36 | 215 | 89 | 0.4 | 1 | 200 | 0.07% | 6.0 |
| JM5 | — | 0.017 | — | 216 | — | 3.6 | 0.5 | 100 | — | — |
| JM11 | 1.8 | 0.085 | 41 | 62 | 47 | 5 | 1 | 300 | 4% | 1.5 |
| SF2 | 0.58 | 0 | 15 | 20 | 9 | 0 | 2 | 100 | 0% | 1.3 |
| JM1 | 0.6 | — | 86 | — | 54 | — | 0.5 | 200 | — | — |
| SM4 | 9.3 | 0.060 | 17 | 61 | 144 | 8.6 | 1.5 | 100 | 0.6% | 3.6 |
| SD3 | 0.36 | 0.040 | 18 | 53 | 6 | 2 | 2 | 250 | 11% | 2.9 |
| SF3 | 2.2 | 0.030 | 10 | 25 | 22 | 0.7 | 2 | 100 | 1.4% | 2.5 |
| SF8 | 3.2 | 0.180 | 11 | 25 | 35 | 4.5 | 2 | 100 | 5.6% | 2.3 |
| SD4 | 0.6 | 0.02 | 32 | 52 (59) | 2 | 1 | 2 | 250 | 3% | 1.6 |
| SF4 | 19.8 | 6.600 | 3.6 | 5.6 | — | — | 6 | 100 | 33% | 1.5 |
| SD2 | 0.52 | 0.012 | 17 | 20 (73) | 9 | 0.2 | 4 | 250 | 2.3% | 1.2 |
| SD1 | 1.2 | 0.086 | 27 | 30 | 32 | 2.5 | 2 | 250 | 7.1% | 1.1 |
| SM1 | 11.0 | — | 15 | — | 151 | — | 1.5 | 100 | — | — |

The critical current I_C , the normal resistance (measured above gap) R_N , the $I_C R_N$ product, the width of the device w (in case of a SQUID twice the junction) and the distance between the electrodes L are reported. Devices JM10, JM5, SM4, SF8, and SD1 showed inverted magnetic patterns in the second cool down. The devices JM10 and JM5 are discussed in the text. The junctions start with a J in the device name, whereas the SQUIDs device names start with an S

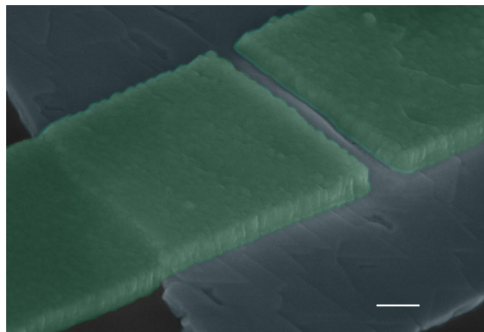


Fig. 3 Colored SEM image of a typical junction after the second cool down. The picture (scale bar: 200 nm) shows a junction presenting an inverted Josephson magnetic pattern, after the second cool down. A clear buckling feature, induced by a compressive strain, is visible in the nanogap

interface³¹ (Fig. 5a); however the net pairing symmetry of the order parameter remains a chiral p -wave at the interface region, with a slightly reduced magnitude. As the interface transparency is lowered, the p_x component of the order parameter will be strongly suppressed, while the p_y slightly enhanced^{31,32} (Fig. 5b). Considering our data at the first cool down the transparency is high; if the induced order parameter is of the type $p+s$ it will preserve the same symmetry at the interface. In this case, a Fraunhofer-like magnetic pattern is expected²³, as we have found in our experiment. After thermal cycling, however, the critical current is suppressed by orders of magnitude (Fig. 2). This fact cannot solely be attributed to a change in interface transparency due to plastic deformations induced by compressive strain (buckling). The strong suppression of I_C is, on the other hand, fully consistent with a change in pairing symmetry of the $p+s$ OP. In particular, as theoretically predicted^{31,32} the chiral p -wave term will assume a predominantly p_y -wave form at the interfaces (with the p_y lobe parallel to the interface).

If one considers only the chiral term of the $p+s$ OP its amplitude and phase at the S'IN interface are shown in Fig. 5c and 5d for a highly and low transparent interface respectively³². The chiral p term, of the total OP, is mainly transformed in p_y for low transparency barriers. Theory shows that in p_y - p_y junctions the critical current becomes strongly suppressed even for a slight increase of scattering in the junction³³. This is therefore

consistent with the observed reduction, of orders of magnitude in I_C , after thermal cycling. Secondly, such a change in pairing symmetry also explains the inversion of the Fraunhofer pattern with a dip at $B=0$ when the S'IN interface transparency is lowered. For a predominantly p_y -wave OP at the interface, the occurrence of scattering in the normal region of the junction will couple quasiparticle trajectories, emerging from positive p_y lobe of the OP on one side of the junction, with trajectories that probe the negative p_y lobe on the other side of the junction. This corresponds to a net π -phase shift in the Josephson coupling (Fig. 6a and b). Here it is worth pointing out that while the buckling wave in the nanogap area can partially be responsible for the reduction of the Josephson current (and possibly for a non homogenous distribution of J_C across the width of the junction) it cannot account for the peculiar dip of the Fraunhofer pattern at $B=0$, requiring a net π -phase shift between the electrodes. While the above scenario provides a possible route for introducing 0- and π -trajectories in the system, we underline that an s -wave component of the OP simultaneously exists. We speculate that for π -shifted trajectories to become possible, it might be of importance that the p_y -wave component is enhanced compared to the s -wave one since the p - and s -wave condensates are not separated due to the spin-mixing resulting from the normal-state TI dispersion with spin momentum locking.

In films with pronounced pyramidal nano-domains, like the flakes used in our experiment, the edges have proven to host an enhanced density of states^{34,35} and to be preferential trajectories³⁶. Aharonov-Bohm oscillations in the magneto-resistance of thin films, where orbits around the triangle edges define the loop areas³⁶ have been recently detected, demonstrating that the triangle's corners and more in general step-edges work as scattering centers. To show that this effect is also observed in our Bi_2Te_3 flakes we have measured the magneto-transport down to 20 mK temperatures. We observe clear periodic magneto-resistance oscillations, arising from coherent scattering of electron waves from the corners of the pyramidal domains and/or from the points where two domains merge, with a period corresponding to the morphology of the flake (Supplementary Note 4). In this scenario, among the quasi-particles crossing the Bi_2Te_3 normal channel, the ones undergoing large scattering angles at the corners or step-edges of the pyramidal nano-domain, will probe a phase shift of π on the other side of the junction. The quasi-particles trajectories, instead, that do not undergo scattering events in the normal channel (e.g., coupling

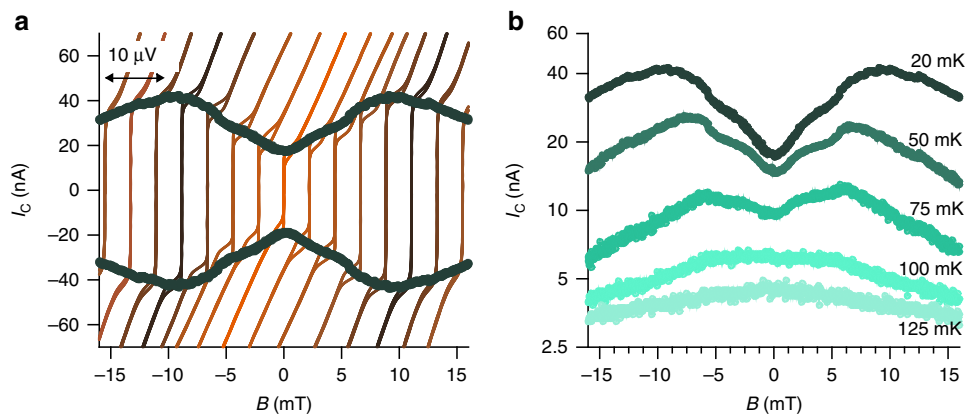


Fig. 4 Current voltage characteristics as a function of magnetic field and temperature for a typical junction after thermal cycling. **a** IVCs of a second device ($w = 500$ nm and $L = 100$ nm) are shown as a function of B after thermal cycling. The curves are shifted in voltage by a value proportional to the magnetic field. The green points represent the magnetic pattern of the junctions obtained using a voltage criterium $V = 600$ nV. Also in this case the magnetic pattern presents a very pronounced dip at $B = 0$. **b** Evolution of the magnetic pattern shown in **a** as a function of the temperature. The dip flattens out at a temperature close to 100 mK

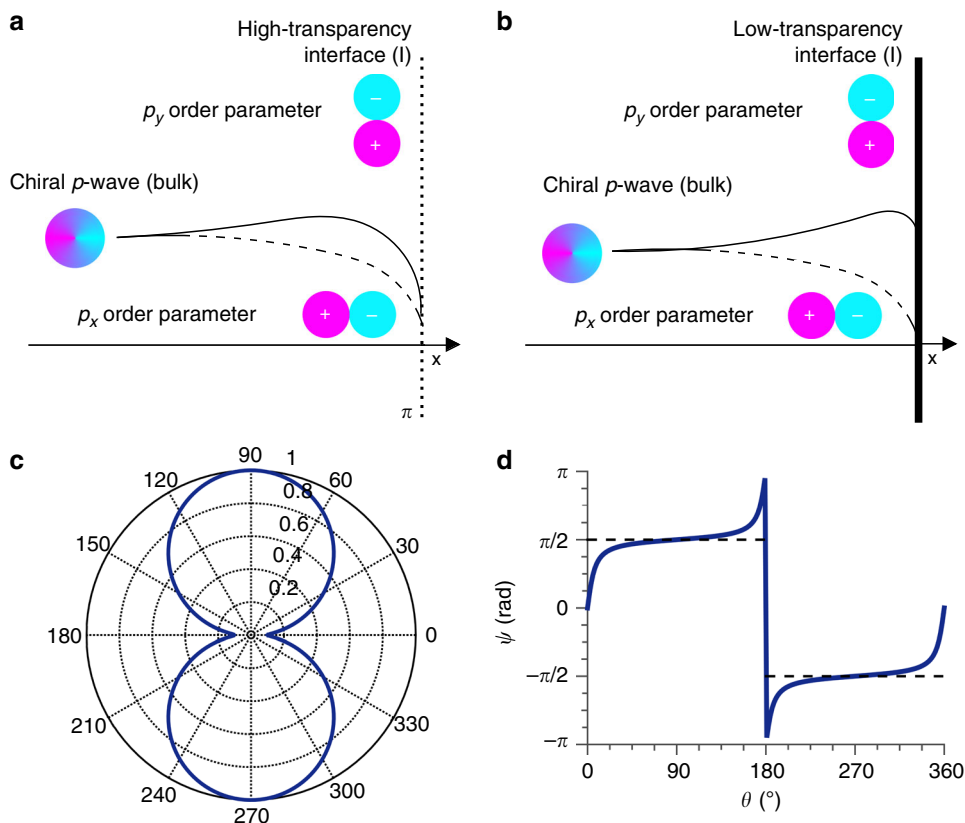


Fig. 5 Proximity-induced OP on the surface of Bi_2Te_3 . We consider only the chiral $p_x + ip_y$ part of the total $p + s$ OP. Close to the interface I the chiral term is modified: the p_x (dashed line) and p_y (straight line) components exhibit different magnitude. In case of high transparency interface (**a**), the two components are both suppressed in equal manner and the resulting interface OP still preserve the $p_x + ip_y$ wave character. For a low transparency interface (**b**), the p_x component is highly suppressed while the p_y slightly enhanced. The resulting OP has a predominantly p_y character. **c** shows the amplitude of the resulting interface OP by considering a mixture $p_y + \alpha p_x$, with $\alpha = 0.1$. This corresponds to the reduction of p_x on distances of the order of the coherence length of S^28 . The corresponding phase is shown in **d**

lobes of the same sign with each other) give a conventional 0 coupling. The schematics of the scattering processes are shown in Fig. 6b. The net result is that the total supercurrent is partially canceled by these competing contributions, which amounts to a suppressed I_C at zero field.

This simple explanation has also a direct microscopic analog in terms of Andreev levels mediated transport in a Josephson junction³⁷. Indeed a peculiarity of our measurement is the transition of the magnetic pattern to a conventional Fraunhofer type, for temperatures around 100 mK when the dip at zero field

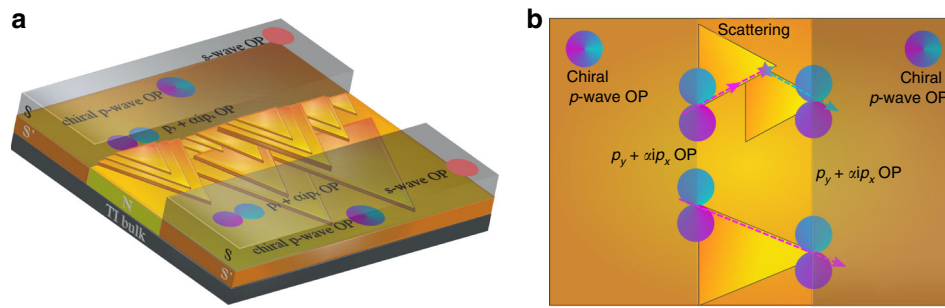


Fig. 6 Sketch of the device showing the induced order parameter and the occurrence of π -paths across the junction. **a** Three-dimensional sketch of the Bi_2Te_3 device. The Al electrodes (S) induce an effective $p + s$ -wave superconductivity on the surface of the TI. In the picture we consider only the chiral term of the total OP. In close proximity of a low transparency interface the chiral $p_x + ip_y$ changes symmetry resulting in a predominant p_y component (see main text for details). **b** Top view of the device. The occurrence of scattering at the pyramid corners and/or at the merging points of two pyramidal domains, in the N region of the junction, makes quasiparticle trajectories emerging from a negative p_y lobe (blue arrow) on one side of the junction to couple with trajectories that probe the negative p_y lobe (red arrow) on the other side of the junction. In case of scattering-free transport in the N region the quasi-particles trajectories probe the same phase in both electrodes (red arrows)

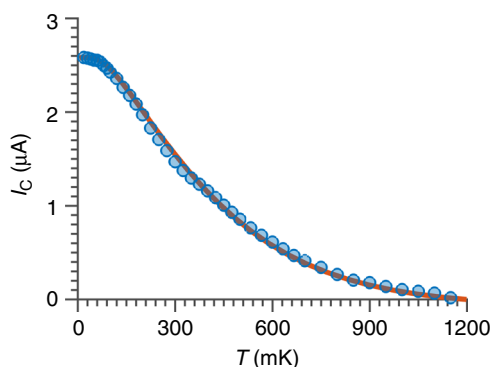


Fig. 7 Temperature dependence of the Josephson current for a high transparency junction. Critical current as a function of the temperature, measured at the first cool down for the junction of Fig. 1c (full circles). The red line is the fitting considering a quasi-ballistic transport model (see Supplementary Note 6 and Supplementary Equations (5-10)). We extract the following fitting parameters for the mean free path $l_e = 130$ nm and the transparencies of the two barriers $D_1 = D_2 = 0.98$. From Supplementary Equation (13) the expected normal-state resistance is $R_N = 70 \Omega$. The experimental value for R_N is instead 35Ω . The discrepancy between these two values can be attributed to the shunting effect of the bulk of the Bi_2Te_3 flake

flattens out (Fig. 4b). This crossover has been theoretically predicted in the framework of low transparent Josephson junctions involving d -wave HTS^{37,38}. The physics behind this phenomenology is connected to the presence of zero energy Andreev bound states, or mid gap states (MGS), characteristic of Josephson junctions with an OP with a nontrivial internal phase³⁷. For the case of Fig. 5b, the p_x component, responsible of the MGS formation³¹, is non zero on distances where Andreev reflection takes place³⁷ (which are given by the coherence length in S'). Mid gap states are therefore formed on both sides of the junction and their resonant coupling gives an additional Josephson transport channel proportional to \sqrt{D} (instead of D as for conventional Andreev level mediated transport). When the MGS carrying current dominates at very low temperature^{37,38} and scattering events take place at triangle corners, the equilibrium phase difference of the system is at π , corresponding to a negative current. For straight quasiparticle trajectories the MGS current gives a conventional 0 phase character ground state.

Formally, this scenario is similar to artificially designed 0- π ferromagnetic Josephson junctions where multiple connected

segments are π -shifted compared to each other³⁹. In this case, a similar inverted pattern is observed. The dip of the Josephson current at $B=0$ is thus the proof of a superconducting order parameter with an internal phase-structure, which can cause either 0 or π couplings, precisely as seen in our setup (Supplementary Note 5).

In a generic junction, the contribution to the current is due to both the resonant MGS and the conventional Andreev bound states. At larger temperature the contributions of MGSs current cancels out since both MGSs carrying forward and backwards current are populated³⁷ and therefore the conventional Andreev levels current will dominate. This leads to a peculiar π to 0 transition by increasing the temperature. Signatures of such a crossover have been reported in a superconducting quantum interference device (SQUID) geometry for d -wave junctions⁴⁰. However those results were never confirmed, posing serious doubts on the effective possibility to detect a π -0 transition from the temperature dependence of the magnetic patterns. Our experiment is therefore one of the first demonstrations of Josephson transport mediated by MGS.

Clearly the dip at $B=0$ in the magnetic pattern is also compatible with a $d_{x^2-y^2}$ wave order parameter⁴¹. We can rule out this possibility since the $d_{x^2-y^2}$ OP does not change symmetry depending on the interface transparency³⁷ and therefore cannot account for the dramatic modifications of the magnetic field response of the junctions upon thermal cycling. An helical $p_x + p_y$ OP can instead be compatible with our entire experimental scenario. However, this OP symmetry does not come directly from the theoretical works^{1,14,41}, so the possibility to induce an helical $p_x + p_y$ OP needs further theoretical assessment.

To further check the conjecture that step-edges and pyramidal corners act as scattering centers, we have fitted the temperature dependence of the critical current $I_c(T)$ of the high transparency junctions. We consider that our S'INIS' junction is characterized by insulating barriers with transparencies D_1 and D_2 , which are separated by a distance L ⁴². The disorder in the normal channel is characterized by a mean free path l_e . As previously discussed, in case of high transparency barriers the junction behaves similarly to conventional s -wave junctions⁴³; in this case we do not lose generality by modeling the S' superconductor with an s -wave OP. The Josephson current for an S'INIS' junction in the clean limit $l_e \gg L$ has been derived in a previous work⁸. To fit our data, we have modified the original result of ref. 8 in two ways (Supplementary Note 6): (i) by adapting it to the two-dimensional Dirac character of the surface states, and (ii) by extending it into the regime $l_e \approx L$ which is achieved by changing the flight time

expression of the electrons between the leads. We have verified that our approach well reproduces the Eilenberger theory for purely ballistic junctions and the Usadel theory for short diffusive junctions. Figure 7 shows the $I_C(T)$ of the junction of Fig. 1c. The solid curve is the fit by considering the geometrical dimensions and $l_e = 130$ nm. The extracted value for the mean free path clearly supports our assumption that few scattering centers are present in the barrier and that some quasi-particles while crossing the TI channel will undergo a single scattering event. The value of the normal-state resistance extracted from the fit is higher than the experimental one, which can be explained by shunting effect of the bulk of the Bi_2Te_3 ⁸ (Supplementary Note 6).

It is worth mentioning that we did not observe any apparent correlation between the orientation of the nano-pyramidal domains and that of the electrodes. This is not surprising; the basic mechanism to get an inverted magnetic field pattern, is the occurrence of 0 and π trajectories within the nanogap and they can be obtained for whatever orientation of the triangles with respect of the electrode, provided that some of the corners and/or the points where two domains merge fall within the Bi_2Te_3 nanogap (Supplementary Note 4).

Finally we would like to point out that magneto transport measurements (Supplementary Note 4) have clearly shown that scattering mechanisms, connected to the morphology of the Bi_2Te_3 flakes, take place in the junction channel, which is instrumental to get π trajectories. However the interpretation of our measurements does not change if other scattering mechanisms are also involved.

To conclude it is worth discussing if the interpretation we have provided of our experiment would change if we would also consider a parallel Josephson contribution due to the transport through the bulk with an s -wave OP. Cooper pair transport through the bulk would just act as 0 trajectories effectively lifting the value of the Josephson current at zero external magnetic field, however leaving unaltered the dip structure at zero field of the magnetic pattern.

Methods

Materials and device fabrication. Bi_2Te_3 thin films have been deposited by molecular beam epitaxy on a GaAs (100) substrate with a 2° vicinal cut. Prior to the growth, a 1 min Te soaking to the GaAs surface was carried out for passivation purpose. Then, the growth started at a temperature of 180 °C, when both Te and Bi sources were opened, and ended at a thickness of 80 nm after 1 h. The films have been grown with a high Te/Bi flux ratio, to obtain high quality crystallinity, as verified by X-ray diffraction (XRD) analysis⁴⁴.

The films show characteristic aligned pyramidal domains (Fig. 1b). This morphology is different with respect to the growth on exact substrates, where two types of pyramidal domains rotated by 60° with respect to each other are observed²⁰. As verified by XRD analysis, our films show 86% single domain, which indicates that the vicinal cut in the substrate leads to suppression of twin boundaries, as also reported in literature²⁰. The transport properties have been characterized by magneto-transport measurements; the films show an effective surface carrier density of $4 \times 10^{13} \text{ cm}^{-2}$ and mobility above $2000 \text{ cm}^2 \text{ V}^{-1} \text{ s}^{-1}$ (at the temperature of $T = 2$ K).

Josephson junctions using Al electrodes have been realized by transferring the flakes on a Si/SiO₂ substrate. To improve the adhesion with the Al electrodes a thin layer (3 nm) of Pt is deposited in situ on the surface of the flake, previously cleaned by a short (10 s) Ar⁺ ion milling^{45,46}.

Data availability. All relevant data are available from the authors.

Received: 12 July 2017 Accepted: 5 November 2017

Published online: 08 December 2017

References

1. Fu, L. & Kane, C. L. Superconducting proximity effect and majorana fermions at the surface of a topological insulator. *Phys. Rev. Lett.* **100**, 096407 (2008).

2. Beenakker, C. W. J. Search for Majorana fermions in superconductors. *Annu. Rev. Condens. Matter Phys.* **4**, 113–136 (2013).
3. Alicea, J. New directions in the pursuit of Majorana fermions in solid state systems. *Rep. Prog. Phys.* **75**, 076501 (2012).
4. Qi, X. L., Hughes, T. L., Raghu, S. & Zhang, S. C. Time-reversal-invariant topological superconductors and superfluids in two and three dimensions. *Phys. Rev. Lett.* **102**, 187001 (2009).
5. Hasan, M. Z. & Kane, C. L. Colloquium: topological insulators. *Rev. Mod. Phys.* **82**, 3045–3067 (2010).
6. Qi, X.-L., Witten, E. & Zhang, S.-C. Axion topological field theory of topological superconductors. *Phys. Rev. B* **87**, <https://doi.org/10.1103/PhysRevB.87.134519> (2013).
7. Sacepe, B. et al. Gate-tuned normal and superconducting transport at the surface of a topological insulator. *Nat. Commun.* **2**, 575 (2011).
8. Veldhorst, M. et al. Josephson supercurrent through a topological insulator surface state. *Nat. Mater.* **11**, 417–421 (2012).
9. Oostinga, J. B. et al. Josephson supercurrent through the topological surface states of strained Bulk HgTe. *Phys. Rev. X* **3**, 021007 (2013).
10. Galletti, L. et al. Influence of topological edge states on the properties of Al/Bi₂Se₃/Al hybrid Josephson devices. *Phys. Rev. B* **89**, 134512 (2014).
11. Kurter, C., Finck, A. D., Hor, Y. S. & Van Harlingen, D. J. Evidence for an anomalous current-phase relation in topological insulator Josephson junctions. *Nat. Commun.* **6**, 7130 (2015).
12. Hart, S. et al. Induced superconductivity in the quantum spin Hall edge. *Nat. Phys.* **10**, 638–643 (2014).
13. Pribiag, V. S. et al. Edge-mode superconductivity in a two-dimensional topological insulator. *Nat. Nanotechnol.* **10**, 593–597 (2015).
14. Tkachov, G. & Hankiewicz, E. M. Helical Andreev bound states and superconducting Klein tunneling in topological insulator Josephson junctions. *Phys. Rev. B* **88**, <https://doi.org/10.1103/PhysRevB.88.075401> (2013).
15. Kallin, C. Chiral p-wave order in Sr₂RuO₄. *Rep. Prog. Phys.* **75**, 042501 (2012).
16. Cho, S. et al. Symmetry protected Josephson supercurrents in three-dimensional topological insulators. *Nat. Commun.* **4**, 1689 (2013).
17. Sochnikov, I. et al. Nonsinusoidal current-phase relationship in Josephson junctions from the 3D topological insulator HgTe. *Phys. Rev. Lett.* **114**, 066801 (2015).
18. Van Harlingen, D. J. Phase-sensitive tests of the symmetry of the pairing state in the high-temperature superconductors—Evidence for d_{x₂-y₂} symmetry. *Rev. Mod. Phys.* **67**, 515–535 (1995).
19. Tsuei, C. C. & Kirtley, J. R. Pairing symmetry in cuprate superconductors. *Rev. Mod. Phys.* **72**, 969–1016 (2000).
20. Tarakina, N. V. et al. Suppressing Twin Formation in Bi₂Se₃ Thin Films. *Adv. Mater. Interf.* **1**, 1400134 (2014).
21. Flensberg, K., Hansen, J. B. & Octavio, M. Subharmonic energy-gap structure in superconducting weak links. *Phys. Rev. B* **38**, 8707–8711 (1988).
22. Abay, S. et al. Charge transport in InAs nanowire Josephson junctions. *Phys. Rev. B* **89**, <https://doi.org/10.1103/PhysRevB.89.214508> (2014).
23. Potter, A. C. & Fu, L. Anomalous supercurrent from Majorana states in topological insulator Josephson junctions. *Phys. Rev. B* **88**, 121109, <https://doi.org/10.1103/PhysRevB.88.121109> (2013).
24. Molenaar, C. G., Leusink, D. P., Wang, X. L. & Brinkman, A. Geometric dependence of Nb-Bi₂Te₃-Nb topological Josephson junction transport parameters. *Supercond. Sci. Technol.* **27**, 104003 (2014).
25. Williams, J. R. et al. Unconventional Josephson effect in hybrid superconductor-topological insulator devices. *Phys. Rev. Lett.* **109**, 056803 (2012).
26. Liu, W. et al. Anisotropic interactions and strain-induced topological phase transition in Sb₂Se₃ and Bi₂Se₃. *Phys. Rev. B* **84**, 245105 (2011).
27. Young, S. M. et al. Theoretical investigation of the evolution of the topological phase of Bi₂Se₃ under mechanical strain. *Phys. Rev. B* **84**, 085106 (2011).
28. Zeljkovic, I. et al. Strain engineering Dirac surface states in heteroepitaxial topological crystalline insulator thin films. *Nat. Nanotechnol.* **10**, 849–853 (2015).
29. Liu, Y. et al. Tuning Dirac states by strain in the topological insulator Bi₂Se₃. *Nat. Phys.* **10**, 294–299 (2014).
30. Bowden, N., Brittain, S., Evans, A. G., Hutchinson, J. W. & Whitesides, G. M. Spontaneous formation of ordered structures in thin films of metals supported on an elastomeric polymer. *Nature* **393**, 146–149 (1998).
31. Tanuma, Y., Tanaka, Y. & Kashiwaya, S. Theory of the proximity effect at the interface of a normal metal and triplet p-wave superconductor in the clean limit. *Phys. Rev. B* **74**, 024506 (2006).
32. Matsumoto, M. & Sigrist, M. Quasiparticle states near the surface and the domain wall in apx±ipy-wave superconductor. *J. Phys. Soc. Jpn.* **68**, 994–1007 (1999).
33. Asano, Y., Tanaka, Y., Yokoyama, T. & Kashiwaya, S. Josephson current through superconductor/diffusive-normal-metal/superconductor junctions: interference effects governed by pairing symmetry. *Phys. Rev. B* **74**, 064507 (2006).

34. Alpichshev, Z., Analytis, J. G., Chu, J. H., Fisher, I. R. & Kapitulnik, A. STM imaging of a bound state along a step on the surface of the topological insulator Bi_2Te_3 . *Phys. Rev. B* **84**, 041104 (2011).
35. Liu, Y., Weinert, M. & Li, L. Spiral growth without dislocations: molecular beam epitaxy of the topological insulator Bi_2Se_3 on epitaxial graphene/SiC (0001). *Phys. Rev. Lett.* **108**, 115501 (2012).
36. Kandala, A., Richardella, A., Zhang, D., Flanagan, T. C. & Samarth, N. Surface-sensitive two-dimensional magneto-fingerprint in mesoscopic Bi_2Se_3 channels. *Nano. Lett.* **13**, 2471–2476 (2013).
37. Lofwander, T., Shumeiko, V. S. & Wendin, G. Andreev bound states in high-T-c superconducting junctions. *Supercond. Sci. Technol.* **14**, R53–R77 (2001).
38. Tanaka, Y. & Kashiwaya, S. Theory of Josephson effects in anisotropic superconductors. *Phys. Rev. B* **56**, 892–912 (1997).
39. Weides, M. et al. 0- π Josephson tunnel junctions with ferromagnetic barrier. *Phys. Rev. Lett.* **97**, 247001 (2006).
40. Testa, G. et al. Mid gap state-based π -junctions for digital applications. *Appl. Phys. Lett.* **85**, 1202 (2004).
41. Black-Schaffer, A. M. & Balatsky, A. V. Proximity-induced unconventional superconductivity in topological insulators. *Phys. Rev. B* **87**, <https://doi.org/10.1103/PhysRevB.87.220506> (2013).
42. Galaktionov, A. V. & Zaikin, A. D. Quantum interference and supercurrent in multiple-barrier proximity structures. *Phys. Rev. B* **65**, 184507 (2002).
43. Sawa, Y., Yokoyama, T., Tanaka, Y. & Golubov, A. A. Quasiclassical Green's function theory of the Josephson effect in chiral p-wave superconductor/diffusive normal metal/chiral p-wave superconductor junctions. *Phys. Rev. B* **75**, 134508 (2007).
44. Fülöp, A. et al. Phase transition of bismuth telluride thin films grown by MBE. *Appl. Phys. Express* **7**, 045503 (2014).
45. Galletti, L. et al. Josephson effect in Al/Bi₂Se₃/Al coplanar hybrid devices. *Physica C* **503**, 162–165 (2014).
46. Andzane, J. et al. Catalyst-free vapour–solid technique for deposition of Bi_2Te_3 and Bi_2Se_3 nanowires/nanobelts with topological insulator properties. *Nanoscale* **7**(38), 15935–15944 (2015).

Acknowledgements

The work has been supported by the Knut and Alice Wallenberg Foundation under the project “Dirac Materials.” We thank J. Kirtley, A. Leggett, S. Kubatkin, P. Lucignano,

A. Tagliacozzo, M. Fogelström, M. Eschrig, P. Buset, V. Shumeiko, and A. Black-Schaffer for inspiring discussions.

Author contributions

S.C. and L.G. have fabricated the samples and performed the measurements. S.W. and Y.S. have grown the Bi_2Te_3 thin films. D.G. and J.L. have contributed with theoretical insights and F.T. with discussions. G.K., E.O., A.K., R.A., and R.B. have performed morphological and structural characterizations of the devices. F.L. and T.B. have interpreted the measurements in collaboration with all authors. F.L. has written the paper with inputs from all co-workers.

Additional information

Supplementary Information accompanies this paper at <https://doi.org/10.1038/s41467-017-02069-z>.

Competing interests: The authors declare no competing financial interests.

Reprints and permission information is available online at <http://npg.nature.com/reprintsandpermissions/>

Publisher's note: Springer Nature remains neutral with regard to jurisdictional claims in published maps and institutional affiliations.



Open Access This article is licensed under a Creative Commons Attribution 4.0 International License, which permits use, sharing, adaptation, distribution and reproduction in any medium or format, as long as you give appropriate credit to the original author(s) and the source, provide a link to the Creative Commons license, and indicate if changes were made. The images or other third party material in this article are included in the article's Creative Commons license, unless indicated otherwise in a credit line to the material. If material is not included in the article's Creative Commons license and your intended use is not permitted by statutory regulation or exceeds the permitted use, you will need to obtain permission directly from the copyright holder. To view a copy of this license, visit <http://creativecommons.org/licenses/by/4.0/>.

© The Author(s) 2017