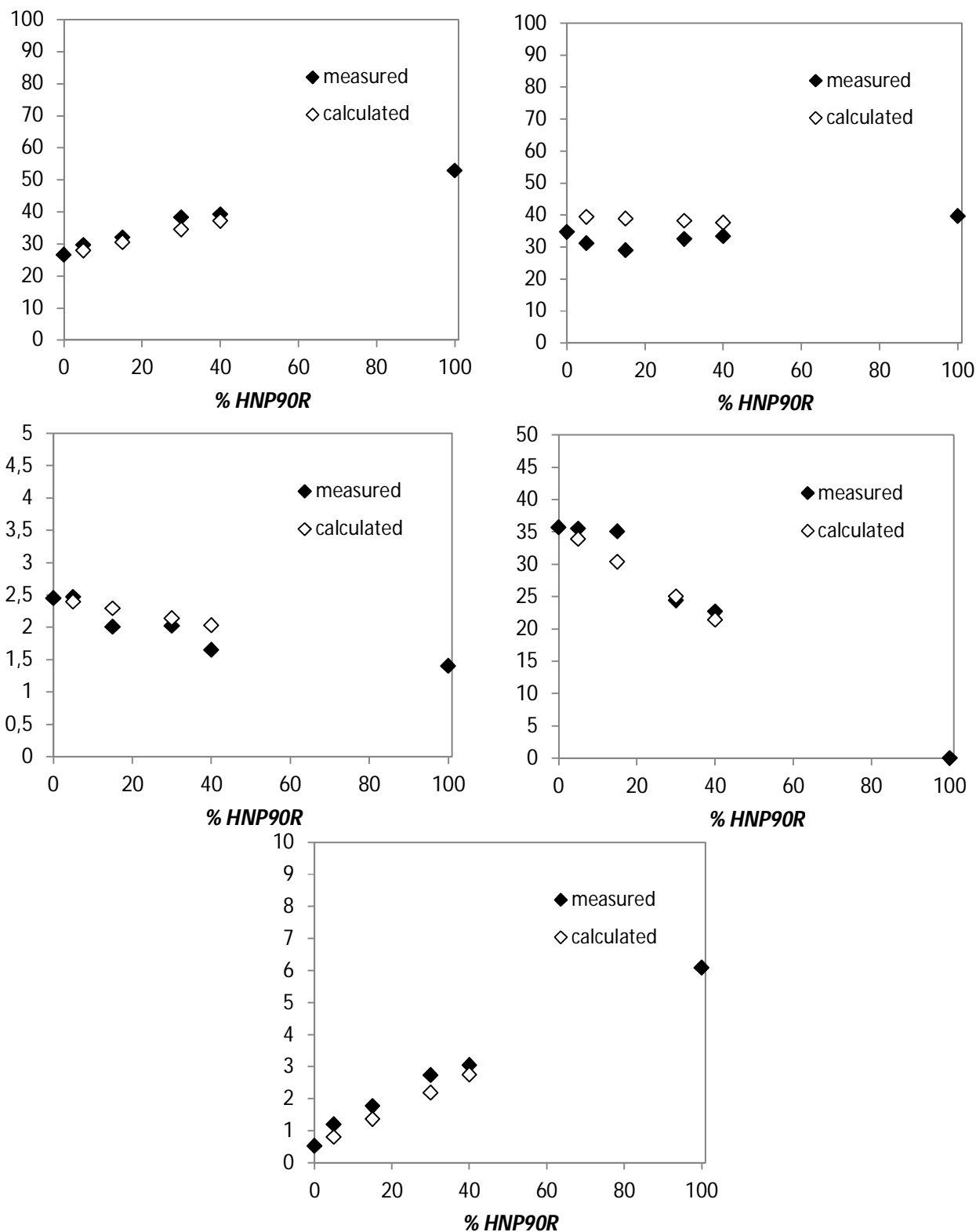


Supporting information to manuscript MATCHEMPHYSD-14-00098

1. *S1: Measured percentages of C, O, H, Cu and N in the composites compared with the “hypothetical” ones, calculated combining the percentage of HNP90R and HKUST-1 in the composites with the percentages of the elements in HNP90R and HKUST-1.*



2. TGA curves of the physical mixture of two components (HNP90R and HKUST-1) of the composites.

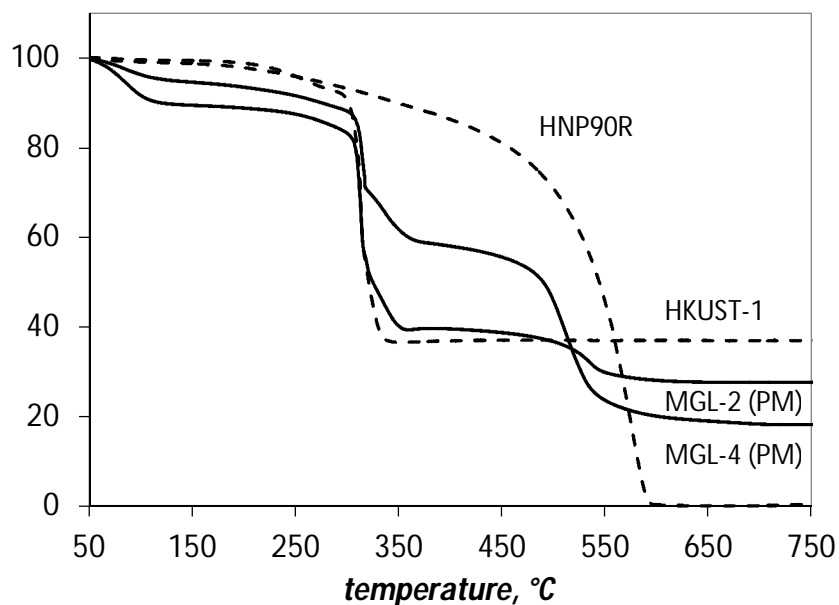
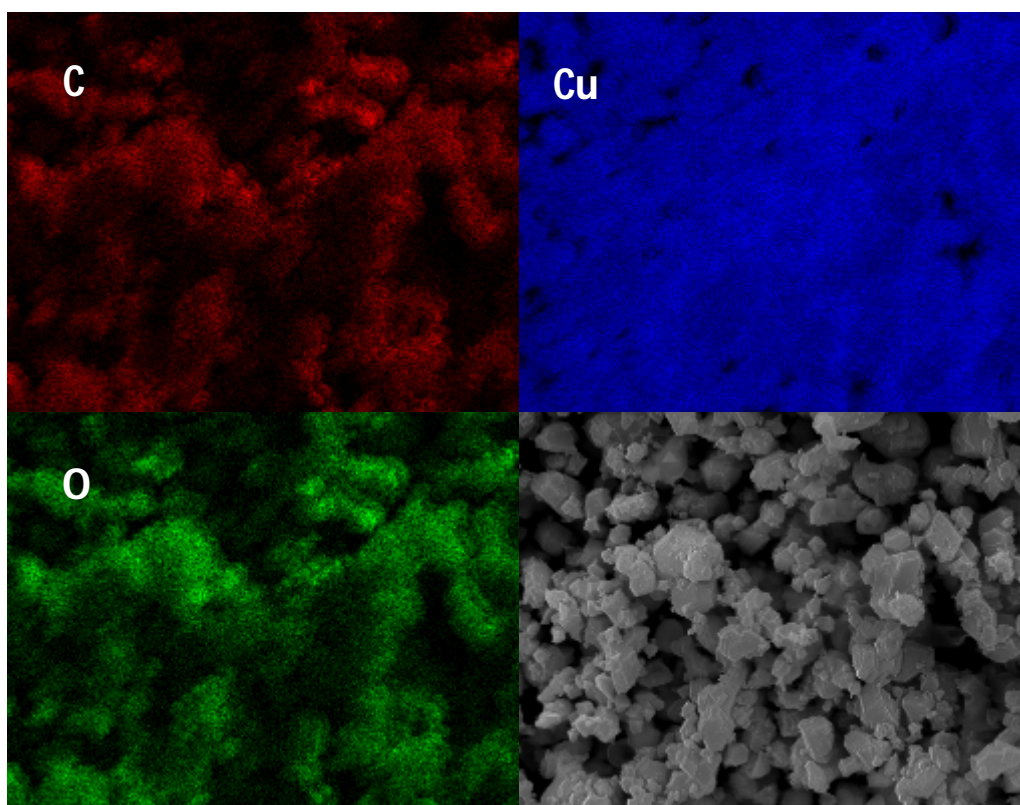


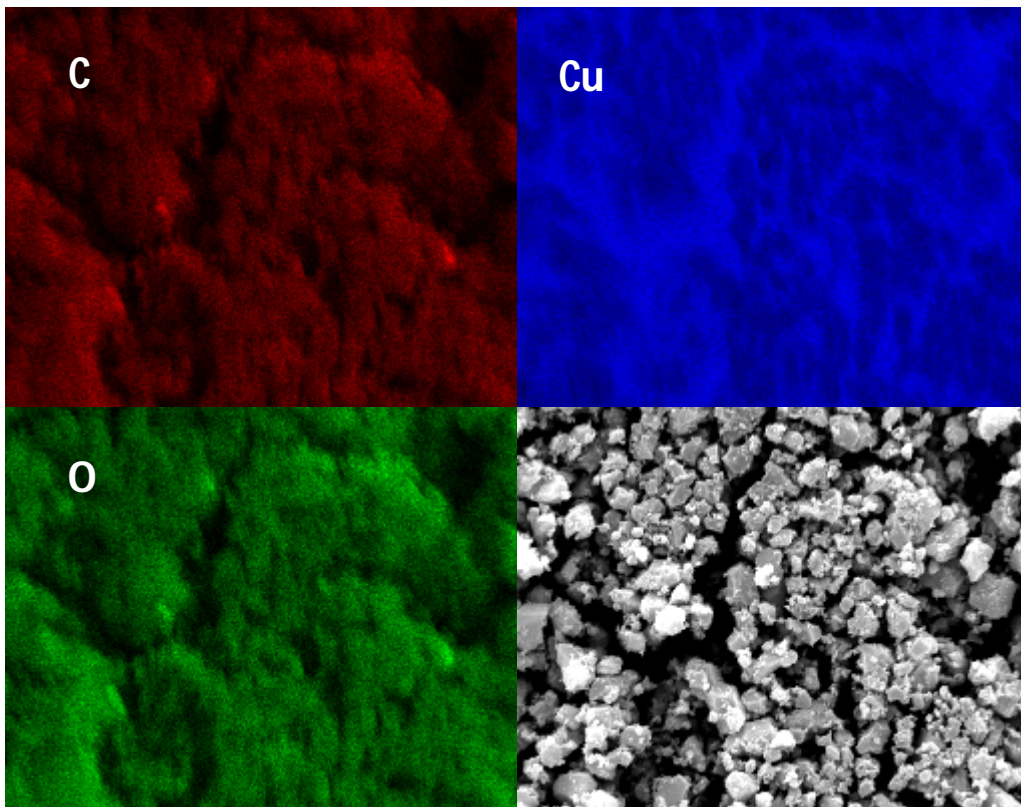
Figure S2. TGA curves in oxidative environments of a physical mixture (PM) of two components (HNP90R and HKUST-1) built mixing at the appropriate % wt. the two pure components. HNP90R and HKUST-1 are also reported for comparison.

3. Elemental mapping using energy dispersive X-ray (EDX) analysis

HKUST-1



MGL-1



MGL-4

