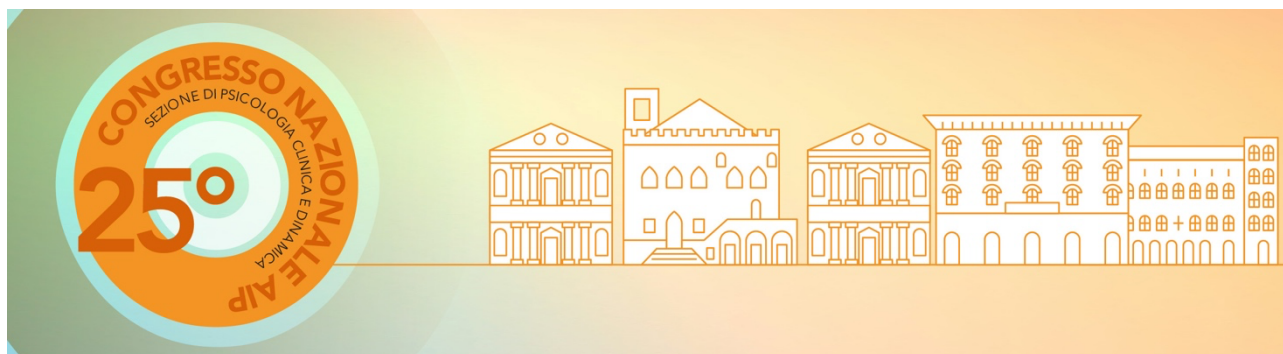


**XXV Congresso Nazionale  
Sezione di Psicologia Clinica e Dinamica  
Università degli Studi di Perugia  
17 - 20 Settembre 2025**



**Con il patrocinio di:**



**Con il contributo e la compartecipazione di:**



Raffaello Cortina Editore



**XXV Congresso Nazionale  
Sezione di Psicologia Clinica e Dinamica  
Università degli Studi di Perugia  
17 - 20 settembre 2025**

**Comitato Scientifico Nazionale**

Piero Porcelli (Coordinatore; Università degli Studi "G. d'Annunzio" di Chieti-Pescara), Maria Di Blasi (Tesoriere; Università degli Studi di Palermo), Fabio Madeddu (Segretario; Università degli Studi di Milano-Bicocca), Alessandra Provera (Alma Mater Studiorum Università di Bologna), Renata Tambelli (Past Coordinator; Sapienza Università di Roma), Riccardo Williams (Sapienza Università di Roma)

**Comitato Scientifico Locale**

**Coordinatrice:** Claudia Mazzeschi (Università degli Studi di Perugia)

**Componenti:** Livia Buratta, Elisa Delvecchio, Carlo Garofalo, Laura Muzi (Università degli Studi di Perugia), Alessandra Babore (Università degli Studi "G. d'Annunzio" di Chieti-Pescara)

**Comitato Organizzativo**

**Coordinatore:** Claudia Mazzeschi (Università degli Studi di Perugia)

**Componenti:** Livia Buratta, Elisa Delvecchio, Carlo Garofalo, Laura Muzi (Università degli Studi di Perugia), Alessandra Babore (Università degli Studi "G. d'Annunzio" di Chieti-Pescara), Irene Aiolfi, Gianluca Bruno (Università degli Studi di Bari – Università degli Studi di Perugia), Antonio Cosenza, Gaia Cuzzocrea, Elide De Caro, Arianna De Ciechi, Giorgio Ghizzoni, Giulia Gizzi, Maria Mirandi, Giulia Moretti, Federica Natalizi, Luciana Paola Pagano, Veronica Raspa, Irene Severi (Università degli Studi di Perugia)

# CONGRESSO

**Università degli Studi di Perugia**  
**Dipartimento di Filosofia, Scienze Sociali, Umane e della Formazione (FiSSUF)**  
**P.zza Ermini 1, 06123 PERUGIA**

SEDI DEL CONGRESSO

**Dipartimento FiSSUF**  
Palazzo Florenzi, Piazza Ermini, 1  
Palazzina Tartaruga – Piazza San Paolo, 4

**Gipsoteca – Centro di Ateneo per i Musei Scientifici**  
Palazzo Pontani, Via dell'Aquilone, 7

**Dipartimento di Lettere, Lingue, Letterature e Civiltà Antiche e Moderne**  
Palazzo Manzoni, Piazza Morlacchi, 11

**Sala dei Notari**  
Piazza IV Novembre, 1

**Auditorium San Francesco al Prato**  
Via S. Francesco, 4

**Auditorium Santa Cecilia**  
Via A. Fratti, 2

**1** Auditorium San Francesco  
al Prato

**2** Palazzina Tartaruga

**3** Palazzo Florenzi

**4** Palazzo Stocchi

**5** Gipsoteca

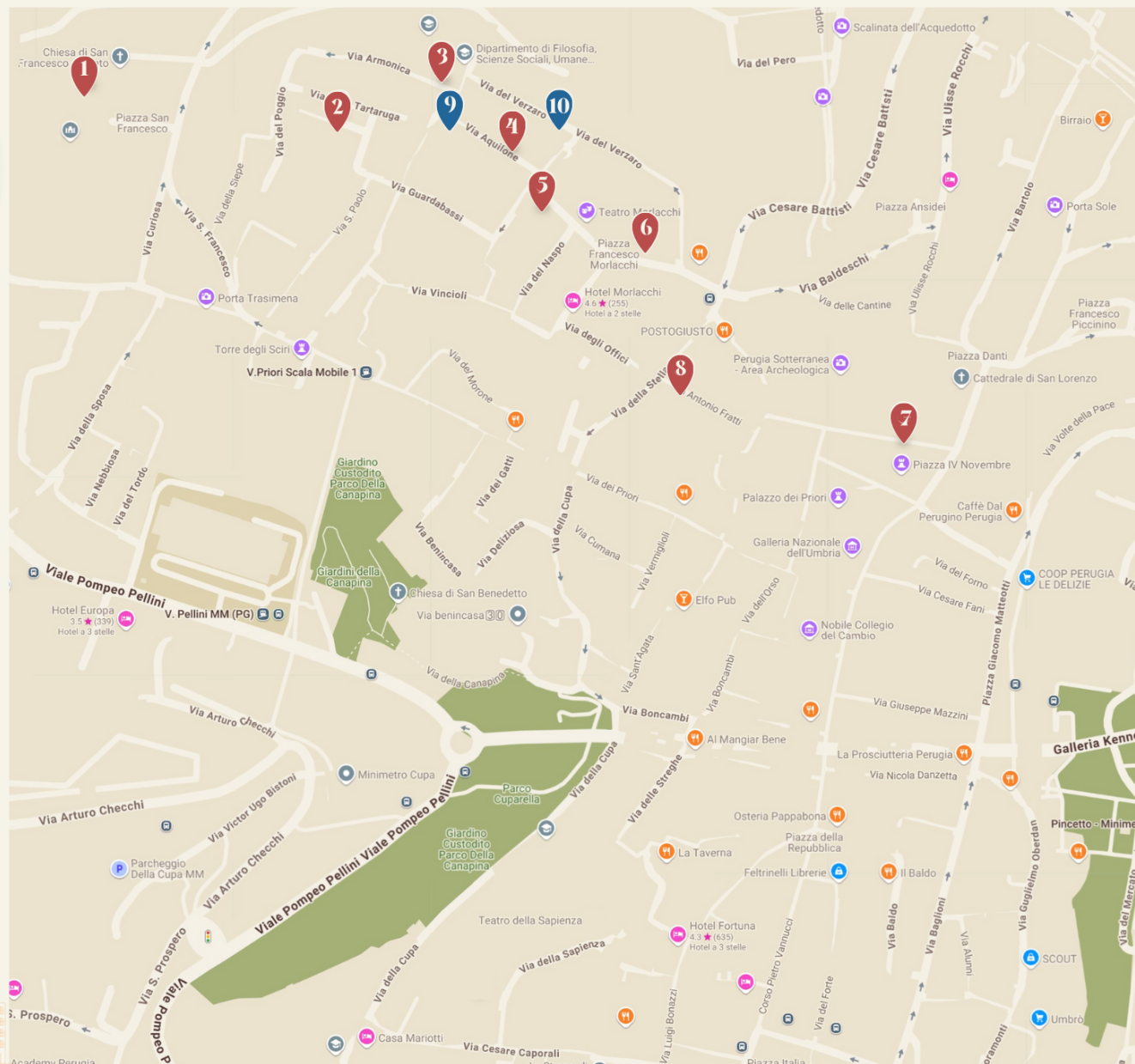
**6** Palazzo Manzoni

**7** Sala dei Notari

**8** Auditorium Santa Cecilia

**9** Palazzo Peiro  
SERVIZI: **DISTRIBUTORI E WC**

**10** Palazzo Meoni  
SERVIZI: **DISTRIBUTORI E WC**



## PROGRAMMA GENERALE

### PRE-CONFERENCE

Sala dei Notari - Piazza IV Novembre

**Mercoledì 17 settembre 2025**

#### APERTURA DEI LAVORI

Vittoria Ferdinandi – *Sindaca Comune di Perugia*

#### Tavola rotonda

#### **I SERVIZI AL SERVIZIO DEL BENESSERE PSICOLOGICO NEI CONTESTI TERRITORIALI: ESPERIENZE, AZIONI, SINERGIE**

**Chair:** Piero Porcelli – *Presidente Comitato Esecutivo AIP-Sezione Psicologia Clinica e Dinamica (Università degli Studi "G. d'Annunzio" di Chieti-Pescara)*

#### Intervengono:

Sergio Sottani – *Procuratore Generale della Repubblica presso la Corte d'Appello di Perugia*

Daniela Donetti – *Direttrice Salute e Welfare, Regione Umbria*

Federico De Salvo – *Consigliere delegato al benessere psicologico, Comune di Perugia*

Laura Berretta – *Presidente Ordine degli Psicologi Regione Umbria*

Marco Grignani – *Direttore Dipartimento Salute Mentale, USL Umbria 1*

Claudia Mazzeschi – *Professoressa di Psicologia Dinamica e Coordinatrice del Comitato Scientifico Locale, Università degli Studi di Perugia, Università degli Studi di Perugia*

#### Conclusioni

Massimiliano Marianelli – *Direttore Dipartimento di Filosofia, Scienze Sociali, Umane e della Formazione, Università degli Studi di Perugia*

15.30-18.00

Giovedì 18 settembre 2025				
9.00-11.00	<b>APERTURA DEL CONGRESSO E SALUTI DELLE AUTORITÀ</b> San Francesco al Prato			
11.00-12.30	<b>Evento di apertura</b>  <b>Roberto Cippitani</b> <i>Università degli Studi di Perugia</i> <i>Direttore della Cattedra ISAAC (Individual Rights in Scientific Research and Cooperation),</i> <i>Facultad de Derecho, UNED- Universidad Nacional de Educación a Distancia (Madrid)</i> <b>“Fare ricerca in Europa. Spazi, libertà, criticità per la psicologia clinica e dinamica”</b>  Auditorium di San Francesco al Prato			
12.30-14.00	<b>Pausa Pranzo</b>			
SIMPOSI IN PARALLELO				
14.00 - 15.45	<b>Aula Tesi Palazzo Florenzi</b>	<b>Aula Magna Palazzo Florenzi</b>	<b>Aula IV Palazzo Florenzi</b>	<b>Gipsoteca</b>
	<i>Cognitive, affective, and neural mechanisms of depression vulnerability: Evidence from high-risk studies</i>  <b>Proponenti:</b> Claudio Imperatori <i>Università Europea di Roma</i>  Rita B. Ardito <i>Università di Torino</i>  Simone Messerotti Benvenuti <i>Università degli Studi di Padova</i>  <b>Discussant:</b> Carlo Lai <i>Sapienza Università di Roma</i>	<i>Understanding and supporting patient decision-making in healthcare: Psychological determinants and tools across the clinical pathway</i>  <b>Proponenti:</b> Denise Vagnini <i>Università Cattolica del Sacro Cuore di Milano</i>  Federica Bonazza <i>Università Cattolica del Sacro Cuore di Milano</i>  <b>Discussant:</b> Luca Rollè <i>Università di Torino</i>	<i>Mind-body interventions and personalized medicine: integrated approaches to well-being</i>  <b>Proponente</b> Francesca Grosso <i>Università Cattolica del Sacro Cuore di Milano</i>  <b>Discussant:</b> Gian Mauro Manzoni <i>Università degli Studi di Pavia</i>	<i>SMART project: Promoting awareness and healthy social media use in mid-adolescents</i>  <b>Proponente:</b> Elisa Delvecchio <i>Università degli Studi di Perugia</i>  <b>Discussant:</b> Silvia Casale <i>Università degli Studi di Firenze</i>
	<b>Aula Magna Palazzo Manzoni</b>	<b>Sala Adunanze Palazzo Manzoni</b>	<b>Aula I Palazzo Manzoni</b>	<b>Aula II Palazzo Manzoni</b>
	<i>Effectiveness and mechanisms of change in the university individual counselling</i>  <b>Proponenti</b> Maria Francesca Freda <i>Università degli Studi di Napoli Federico II</i>  Giovanna Esposito <i>Università degli Studi di Napoli Federico II</i>  <b>Discussant:</b> Fabio Madeddu <i>Università degli Studi di Milano-Bicocca</i>	<i>Parenthood beyond the journey: Psychological perspectives on families formed through assisted reproductive technologies</i>  <b>Proponenti:</b> Alessandra Santona <i>Università degli Studi di Milano-Bicocca</i>  Chiara Fusco <i>Università degli Studi di Milano-Bicocca</i>  <b>Discussant:</b> Elena Vegni <i>Università degli Studi di Milano – La Statale</i>	<i>Well-being, joy, and euphoria: (Trans)affirmative approaches to the psychological health of trans and nonbinary people in clinical practice and research</i>  <b>Proponenti:</b> Fau Rosati <i>Sapienza Università di Roma</i>  Maric Martin Lorusso <i>Alma Mater Studiorum Università di Bologna</i>  <b>Discussant:</b> Marina Miscioscia	<i>Unraveling maladaptive daydreaming: Psychological mechanisms, online narratives, and comorbidities</i>  <b>Proponenti:</b> Rachele Mariani <i>Sapienza Università di Roma</i>  Alessandro Musetti <i>Università degli Studi di Parma</i>  <b>Discussant:</b>

			Università degli Studi di Padova	Adriano Schimmenti Università degli Studi di Enna "Kore"
	<b>Aula III Palazzo Manzoni</b>	<b>Aula 11 Palazzina Tartaruga</b>	<b>Aula 12 Palazzina Tartaruga</b>	<b>Aula 13 Palazzina Tartaruga</b>
	<i>Bridging process and outcome research in clinical interventions</i>	<i>Understanding subjectivity in the suicidal process: Affects, meanings, and personality functioning</i>	<i>Psychological and therapeutic processes underlying mental health</i>	<i>Assessment and intervention in forensic contexts: Integrating tradition and innovation</i>
	<p><b>Proponente:</b> Cesare Cavallera Università Cattolica del Sacro Cuore di Milano</p> <p><b>Discussant:</b> Stefania Cella Università degli Studi della Campania "Luigi Vanvitelli"</p>	<p><b>Proponente:</b> Riccardo Williams Sapienza Università di Roma</p> <p><b>Discussant:</b> Laura Muzi Università degli Studi di Perugia</p>	<p><b>Proponenti:</b> Gabriella Martino Università degli Studi di Messina</p> <p>Chiara Spatola Università degli Studi di Messina</p> <p><b>Discussant:</b> Gianluca Castelnuovo Università Cattolica del Sacro Cuore di Milano</p>	<p><b>Proponenti:</b> Antonia Sorge Università Cattolica del Sacro Cuore di Milano</p> <p>Giovanni Borrelli Università degli Studi "Guglielmo Marconi"</p> <p><b>Discussant:</b> Elena Infantino Sapienza Università di Roma</p>
<b>SESSIONI TEMATICHE IN PARALLELO</b>				
14.00-15.45	<b>Aula II Palazzo Florenzi</b>		<b>Aula III Palazzo Florenzi</b>	
	<p>Addictive Behaviors: Innovative Trends in Research and Clinical Assessment</p> <p><b>Chair:</b> Patrizia Velotti Sapienza Università di Roma</p>		<p>Caregiving and Perinatal Issues</p> <p><b>Chair</b> Alessandra Babore Università degli Studi "G. d'Annunzio" di Chieti-Pescara</p>	
15.45-16.15	<b>Coffee break</b> Palazzo Florenzi			
15.45-16.15	<b>SESSIONI POSTER INTERATTIVE</b> Palazzo Florenzi			
16.15-17.45	<b>TAVOLE ROTONDE IN PARALLELO</b> Palazzo Florenzi, Gipsoteca, Palazzo Manzoni			
18.30	<b>SOCIAL EVENT CON APERITIVO NELLE TERRAZZE DELLA CITTÀ PER SOCI</b>			

**Venerdì 19 settembre**

**SIMPOSI IN PARALLELO**

9.00 - 10.45	<p><b>Aula Tesi Palazzo Florenzi</b></p> <p><i>Upgrading the Rorschach: Research and advances – 8th edition</i></p> <p><b>Proponente:</b> Luciano Giromini Università di Torino</p> <p><b>Discussant:</b> Claudia Mazzeschi Università degli Studi di Perugia</p>	<p><b>Aula Magna Palazzo Florenzi</b></p> <p><i>Contemporary issues and new challenges for problematic digital media use across generations. Precursors, consequences, and maladaptive maintenance functionings</i></p> <p><b>Proponente:</b> Valentina Boursier Università degli Studi di Napoli Federico II</p> <p><b>Discussant:</b> Adriano Schimmenti Università degli Studi di Enna "Kore"</p>	<p><b>Aula IV Palazzo Florenzi</b></p> <p><i>Exploring the complexities of clinical practice: The therapist effect</i></p> <p><b>Proponenti:</b> Annalisa Tanzilli Sapienza Università di Roma</p> <p>Marianna Liotti Sapienza Università di Roma</p> <p><b>Discussant:</b> Antonino Carcione Università degli Studi "Guglielmo Marconi"</p>	<p><b>Gipsoteca</b></p> <p><i>Impact of acute and chronic diseases on psychological wellbeing in patients and caregivers throughout different life stages and identification of risk and protective factors</i></p> <p><b>Proponente:</b> Marta Tremolada Università degli Studi di Padova</p> <p><b>Discussant:</b> Eliana Tossani Alma Mater Studiorum Università di Bologna</p>
	<p><b>Aula Magna Palazzo Manzoni</b></p> <p><i>Grief and loss in cancer: New research perspectives</i></p> <p><b>Proponenti:</b> Vittorio Lenzo Università di Catania</p> <p>Chiara Fioretti Università degli Studi di Salerno</p> <p><b>Discussant:</b> Lucia Sideli LUMSA Università di Roma</p>	<p><b>Sala Adunanze Palazzo Manzoni</b></p> <p><i>Empirical, methodological, and conceptual advances in assessing and treating eating disorders</i></p> <p><b>Proponente:</b> Laura Muzi Università degli Studi di Perugia</p> <p><b>Discussant:</b> Laura Parolin Università degli Studi di Milano-Bicocca</p>	<p><b>Aula I Palazzo Manzoni</b></p> <p><i>Maternal and paternal affective disorders: Interpersonal and psychological pathways</i></p> <p><b>Proponente:</b> Sonia Mangialavori Universitas Mercatorum</p> <p><b>Discussant:</b> Franco Baldoni Alma Mater Studiorum Università di Bologna</p>	<p><b>Aula II Palazzo Manzoni</b></p> <p><i>Climate change: Threat to mind, emotions, and relationships</i></p> <p><b>Proponenti:</b> Nicola Carone Università degli Studi di Roma Tor Vergata</p> <p>Maria Quintigliano Università degli Studi di Roma Tor Vergata</p> <p><b>Discussant:</b> Maria Francesca Freda Università degli Studi di Napoli Federico II</p>
	<p><b>Aula 11 Palazzina Tartaruga</b></p> <p><i>Embodied journeys: Women's bodily experiences in life transitions and clinical conditions</i></p> <p><b>Proponenti:</b> Silvia Cerea Università degli Studi di Padova</p> <p>Chiara Sacchi Università degli Studi di Padova</p>	<p><b>Aula 12 Palazzina Tartaruga</b></p> <p><i>A multi-level approach to child development and family dynamics in caregiving</i></p> <p><b>Proponenti:</b> Paola Rigo Università degli Studi di Padova</p> <p>Michele Giannotti Università degli Studi di Trento</p>	<p><b>Aula 13 Palazzina Tartaruga</b></p> <p><i>[SIMPOSIO E-CARE] Traumatic and adverse experiences: Psychological and physiological implications</i></p> <p><b>Proponente:</b> Valeria Saladino Università "Magna Graecia" di Catanzaro</p> <p><b>Discussant:</b> Paolo Valerio</p>	

	<b>Discussant:</b> Gianluca Castelnuovo <i>Università Cattolica del Sacro Cuore - Milano</i>	<b>Discussant</b> Vincenzo Bochicchio <i>Università della Calabria</i>	<i>Università degli Studi di Napoli Federico II</i>	
<b>SESSIONI TEMATICHE IN PARALLELO</b>				
9.00-10.45	<b>Aula II Palazzo Florenzi</b>		<b>Aula III Palazzo Florenzi</b>	
	Integrative Perspectives on Emotional and Cognitive Functioning in Clinical and At-Risk Populations  <b>Chair:</b> Maria Catena Quattropani <i>Università degli Studi di Catania</i>		Applying Biopsychosocial Approaches in Clinical Settings  <b>Chair:</b> Piero Porcelli <i>Università degli Studi "G. d'Annunzio" di Chieti-Pescara</i>	
10.45-11.15	<b>Coffee Break</b> Palazzo Florenzi			
10.45-11.15	<b>SESSIONI POSTER INTERATTIVE</b> Palazzo Florenzi			
<b>SIMPOSI IN PARALLELO</b>				
11.15-13.00	<b>Aula Tesi Palazzo Florenzi</b>	<b>Aula IV Palazzo Florenzi</b>	<b>Gipsoteca</b>	<b>Aula Magna Palazzo Manzoni</b>
	Enhancing assessment in psychiatry: The role of childhood neglect, sensory dysfunction, group-based rehabilitation, and evolution of the self  <b>Proponente:</b> Francesco Oliva <i>Università di Torino</i>  <b>Discussant:</b> Marco Cavallo <i>Università degli Studi E-CAMPUS</i>	The minds within: Trauma, personality, and clinical innovation through the lens of metacognition and mentalization  <b>Proponente</b> Francesca De Salve <i>Università Cattolica del Sacro Cuore di Milano</i>  <b>Discussant:</b> Nicola Carone <i>Università degli Studi di Roma Tor Vergata</i>	Antagonistic manifestations across the lifespan and different contexts  <b>Proponenti</b> Carlo Garofalo <i>Università degli Studi di Perugia</i>  Antonella Somma <i>Università Vita-Salute San Raffaele</i>  <b>Discussant:</b> Adriano Schimmenti <i>Università degli Studi di Enna "Kore"</i>	Aging between frailty and chronic illness: Psychological adaptation, change processes, and clinical methods of intervention  <b>Proponente:</b> Daniela Lemmo <i>Università degli Studi di Napoli Federico II</i>  <b>Discussant:</b> Michela Di Trani <i>Sapienza Università di Roma</i>
	<b>Sala Adunanze Palazzo Manzoni</b>	<b>Aula I Palazzo Manzoni</b>	<b>Aula II Palazzo Manzoni</b>	<b>Aula 11 Palazzina Tartaruga</b>
	Neuroscience in dynamic and clinical psychology: from the individual to the relationship  <b>Proponenti</b> Carlo Lai <i>Sapienza Università di Roma</i>  Giorgio Veneziani <i>Sapienza Università di Roma</i>  <b>Discussant:</b> Benedetto Farina <i>Università Europea di Roma</i>	Heart rate variability as a marker of vulnerability and resilience: Evidence across clinical and subclinical populations  <b>Proponente</b> Cristina Ottaviani <i>Sapienza Università di Roma; Fondazione Santa Lucia IRCCS</i>  <b>Discussant:</b> Sergio Salvatore <i>Università del Salento</i>	Psychological interventions in different medical settings – 2nd edition  <b>Proponenti</b> Chiara Conti <i>Università degli Studi "G. d'Annunzio" di Chieti-Pescara</i>  Piero Porcelli <i>Università degli Studi "G. d'Annunzio" di Chieti-Pescara</i>  <b>Discussant:</b>	Cultivating Well-Being: Therapeutic Pathways of Mindfulness-Based Approaches Across Diverse Populations  <b>Proponente</b> Rossella Mattea Quinto <i>Università Europea di Roma</i>  <b>Discussant</b> Daniela Marchetti <i>Università degli Studi "G. d'Annunzio" di Chieti-Pescara</i>

			Lorys Castelli Università di Torino	
	<b>Aula 12</b> <b>Palazzina Tartaruga</b>	<b>Aula 13</b> <b>Palazzina Tartaruga</b>		
	<p><i>The Perspectives on Aging: A Multidimensional Approach to Older Adults Well-Being</i></p> <p><b>Proponenti</b> Ilaria Corbo Sapienza Università di Roma</p> <p>Giuseppe Forte Sapienza Università di Roma</p> <p><b>Discussant</b> Alberto Sardella Università di Catania</p>	<p><i>Mentalization, attachment and emotional regulation in contexts of psychological vulnerability</i></p> <p><b>Proponenti:</b> Rossella Procaccia Università degli Studi E-CAMPUS</p> <p>Cristina L. Caldiroli Università degli Studi E-CAMPUS</p> <p><b>Discussant:</b> Francesca Locati Università degli Studi di Pavia</p>		
<b>SESSIONI TEMATICHE IN PARALLELO</b>				
11.15-13.00	<b>Aula II</b> <b>Palazzo Florenzi</b>	<b>Aula III</b> <b>Palazzo Florenzi</b>	<b>Aula Magna</b> <b>Palazzo Florenzi</b>	
	<p>Experiences and Challenges from Childhood to Emerging Adulthood</p> <p><b>Chair:</b> Laura Parolin Università degli Studi di Milano - Bicocca</p>	<p>Attachment and Mentalization: From Assessment to Intervention</p> <p><b>Chair:</b> Chiara Pazzagli Sapienza Università di Roma</p>	<p>Developmental Challenges in Adolescents, and Emerging Adults</p> <p><b>Chair:</b> Daniela Di Riso Università degli Studi di Padova</p>	
13.00-14.15	<b>Pausa Pranzo</b>			
13.00-14.15	<b>SESSIONI POSTER INTERATTIVE</b> Palazzo Florenzi			
<b>SIMPOSI IN PARALLELO</b>				
14.15-16.00	<b>Aula Tesi</b> <b>Palazzo Florenzi</b>	<b>Aula IV</b> <b>Palazzo Florenzi</b>	<b>Gipsoteca</b>	<b>Aula Magna</b> <b>Palazzo Manzoni</b>
	<p><i>Psychotherapy research: A shift from effectiveness to personalized treatments</i></p> <p><b>Proponente:</b> Gianluca Lo Coco Università degli Studi di Palermo</p> <p><b>Discussant:</b> Laura Parolin Università degli Studi di Milano-Bicocca</p>	<p><i>Bridging psychology and medicine: Insights into acute and chronic health conditions</i></p> <p><b>Proponente:</b> Federica Galli Sapienza Università di Roma</p> <p><b>Discussant:</b> Filippo Maria Nimbi Università degli Studi E-CAMPUS</p>	<p><i>Psychological well-being of LGBTQIA+ youth: Exploring risks, protective factors, and barriers to mental health and healthcare access</i></p> <p><b>Proponente:</b> Micol Gemignani Università di Trento</p> <p><b>Discussant:</b> Sofia Pavanello Decaro Università degli Studi di Milano-Bicocca</p>	<p><i>Current trends in forensic assessment: Recent findings and future perspectives</i></p> <p><b>Proponente:</b> Paolo Roma Sapienza Università di Roma</p> <p><b>Discussant:</b> Maria Cristina Verrocchio Università degli Studi "G. d'Annunzio" di Chieti-Pescara</p>

	<p><b>Sala Adunanze Palazzo Manzoni</b></p> <p><i>Dialogues with the unspoken: Experiencing the implicit in the therapeutic process</i></p> <p><b>Proponenti:</b> Ginevra Protopapa Università degli Studi di Roma Tor Vergata</p> <p>Bianca Sofia Chiabrando Sapienza Università di Roma</p> <p><b>Discussant:</b> Osmano Oasi Università Cattolica del Sacro Cuore di Milano</p>	<p><b>Aula I Palazzo Manzoni</b></p> <p><i>Innovative perspectives on psychopathology, recovery, and digital interventions in eating disorders</i></p> <p><b>Proponente:</b> Gaia Albano Università degli Studi di Palermo</p> <p><b>Discussant:</b> Gianluca Castelnuovo Università Cattolica del Sacro Cuore di Milano</p>	<p><b>Aula II Palazzo Manzoni</b></p> <p><i>Recovery through the 'collaborative approach' in mental health care. Theories and practices to clarify the 'co'(s)</i></p> <p><b>Proponente:</b> Elena Faccio Università di Padova</p> <p><b>Discussant:</b> Elena Vegni Università degli Studi di Milano – La Statale</p>	<p><b>Aula 11 Palazzina Tartaruga</b></p> <p><i>Mentalization across the lifespan: Exploring reflective functioning from transgenerational and transdiagnostic perspective</i></p> <p><b>Proponente</b> Francesca Locati Università degli Studi di Pavia</p> <p><b>Discussant</b> Antonino Carcione Università degli Studi "Guglielmo Marconi"</p>
	<p><b>Aula 12 Palazzina Tartaruga</b></p> <p><i>The many faces of the body: Interdisciplinary and clinical insights into body experiences and dimensions</i></p> <p><b>Proponente:</b> Marta Mirabella Sapienza Università di Roma</p> <p><b>Discussant:</b> Laura Muzi Università degli Studi di Perugia</p>	<p><b>Aula 13 Palazzina Tartaruga</b></p> <p><i>From wars to natural disasters: New trajectories of research and intervention in the field of collective trauma</i></p> <p><b>Proponente:</b> Francesca Tessitore Università degli Studi di Salerno</p> <p><b>Discussant:</b> Adriano Schimmenti Università degli Studi di Enna "Kore"</p>		
<b>SESSIONI TEMATICHE IN PARALLELO</b>				
14.15-16.00	<p><b>Aula II Palazzo Florenzi</b></p> <p>Psychological Factors and Physical Health</p> <p><b>Chair:</b> Gian Mauro Manzoni Università degli Studi di Pavia</p>	<p><b>Aula III Palazzo Florenzi</b></p> <p>Relationships and Interpersonal Dynamics</p> <p><b>Chair:</b> Alessandra Santona Università degli Studi di Milano – Bicocca</p>	<p><b>Aula Magna Palazzo Florenzi</b></p> <p>Protective Factors and Well-Being Across the Life Span</p> <p><b>Chair:</b> Federica Andrei Alma Mater Studiorum Università di Bologna</p>	
	16.00-16.30	<p><b>Coffe Break</b> Palazzo Florenzi</p>		
16.30-18.00	<p><b>Tavole Rotonde in parallelo Gruppi di Sezione Clinica e Dinamica</b> Palazzo Florenzi, Gipsoteca, Palazzo Manzoni</p>			
18.30-20.00	<p><b>Piccolo Evento Musicale</b> Auditorium Santa Cecilia</p>			

**Sabato 20 settembre**

**SIMPOSI IN PARALLELO**

9.00-10.45	<b>Aula Tesi Palazzo Florenzi</b>	<b>Aula IV Palazzo Florenzi</b>	<b>Gipsoteca</b>	<b>Aula Magna Palazzo Manzoni</b>
	<i>Bodies, identities, and health processes in lgbtqia+ lives</i>	<i>Neurobiological, psychophysiological and neuropsychological correlates of common mental health and neurodegenerative conditions: How can applied research inform clinical psychology practice?</i>	<i>The "second gender". Mental health challenges among contemporary female adolescents and young women</i>	<i>Psychophysical well-being of university students: Analysis of requests for support and effectiveness of interventions</i>
	<b>Proponenti:</b> Cristiano Scandurra <i>Università degli Studi di Napoli Federico II</i>	<b>Proponente:</b> Marco Cavallo <i>Università degli Studi E-CAMPUS</i>	<b>Proponente:</b> Guido Giovanardi <i>Sapienza Università di Roma</i>	<b>Proponente:</b> Salvatore Gullo <i>Università degli Studi di Palermo</i>
	Gianluca Cruciani <i>Università degli Studi di Roma Tor Vergata</i>	<b>Discussant:</b> Francesco Oliva <i>Università di Torino</i>	<b>Discussant:</b> Alessandra Santona <i>Università degli Studi di Milano-Bicocca</i>	<b>Discussant:</b> Cecilia Serena Pace <i>Università degli Studi di Genova</i>
	<b>Discussant:</b> Luca Rollè <i>Università degli Studi di Torino</i>			
	<b>Sala Adunanze Palazzo Manzoni</b>	<b>Aula I Palazzo Manzoni</b>	<b>Aula II Palazzo Manzoni</b>	<b>Aula III Palazzo Manzoni</b>
	<i>Pathological narcissism, malignancy and aggressiveness in interpersonal relationship</i>	<i>Problematic sexuality across 42 countries: Findings from the international sex survey</i>	<i>Exploring couple dynamics and relationship characteristics in contemporary clinical settings</i>	<i>The progress of sexual health in clinical psychology: New scientific perspectives</i>
	<b>Proponente:</b> Serena Borroni <i>Università Vita-Salute San Raffaele</i>	<b>Proponente:</b> Giacomo Ciocca <i>Sapienza Università di Roma</i>	<b>Proponenti:</b> Marialuisa Gennari <i>Università Cattolica del Sacro Cuore di Brescia</i>	<b>Proponente:</b> Filippo Maria Nimbi <i>Università degli Studi E-CAMPUS</i>
	<b>Discussant:</b> Rossella Di Piero <i>Università degli Studi di Milano-Bicocca</i>	<b>Discussant:</b> Ornella Corazza <i>Università di Trento</i>	Giancarlo Tamanza <i>Università Cattolica del Sacro Cuore di Brescia</i>	<b>Discussant:</b> Lilybeth Fontanesi <i>Università degli Studi "G. d'Annunzio" di Chieti-Pescara</i>
			<b>Discussant:</b> Sara Molgora <i>Università Cattolica del Sacro Cuore di Milano</i>	
	<b>Aula 11 Palazzina Tartaruga</b>	<b>Aula 12 Palazzina Tartaruga</b>	<b>Aula 13 Palazzina Tartaruga</b>	
	<i>Personality functioning, traits, and interpersonal dynamics: A contemporary understanding of personality pathology and its therapeutic implications</i>	<i>Mapping the dynamics of interpersonal synchrony: a multidisciplinary look at brain, behavior, and clinical intervention</i>	<i>From roots to response: Why leveraging on behavioral correlates of psychopathology development from early signs to care</i>	
<b>Proponente:</b> Emanuele Preti	<b>Proponente:</b> Pietro De Carli <i>Università degli Studi di Milano-Bicocca</i>	<b>Proponente:</b> Alessandra Raio <i>Università degli Studi di Bari Aldo Moro</i>		

	<p>Università degli Studi di Milano-Bicocca</p> <p><b>Discussant:</b> Gianluca Lo Coco Università degli Studi di Palermo</p>	<p><b>Discussant:</b> Chiara De Panfilis Università degli studi di Parma</p>	<p><b>Discussant:</b> Alessandro Gennaro Università Telematica Pegaso</p>		
<b>SESSIONI TEMATICHE IN PARALLELO</b>					
	<b>Aula II Palazzo Florenzi</b>	<b>Aula III Palazzo Florenzi</b>	<b>Aula Magna Palazzo Florenzi</b>		
9.00-10.45	<p>Psychological Well-Being and Distress Among University Students</p> <p><b>Chair:</b> Maria Francesca Freda Università degli Studi di Napoli "Federico II"</p>	<p>Empirical and Clinical Trends in Body Image, Eating Behaviors, and Obesity</p> <p><b>Chair:</b> Giulia Gagliardini Università Mercatorum</p>	<p>AI and Digital Technologies in Clinical Research and Practice</p> <p><b>Chair:</b> Angelo Compare Università degli Studi di Bergamo</p>		
10.45-11.15	<b>Coffee Break Palazzo Florenzi</b>				
10.45-11.15	<b>SESSIONI POSTER INTERATTIVE Palazzo Florenzi</b>				
<b>SIMPOSI IN PARALLELO</b>					
11.15-13.00	<b>Aula Tesi Palazzo Florenzi</b>	<b>Aula Magna Palazzo Florenzi</b>	<b>Aula IV Palazzo Florenzi</b>	<b>Gipsoteca</b>	
	<p><i>Emotional health in contemporary parenthood: Insights into the challenges faced by mothers and fathers</i></p> <p><b>Proponente:</b> Federica Andrei Alma Mater Studiorum Università di Bologna</p> <p><b>Discussant:</b> Alessandra Santona Università degli Studi di Milano-Bicocca</p>	<p><i>A new horizon for clinical practice: Steps towards a dimensional approach to psychopathology</i></p> <p><b>Proponenti:</b> Agata Andò Università di Torino</p> <p>Andrea Fossati Università Vita-Salute San Raffaele</p> <p><b>Discussant:</b> Arianna Palmieri Università degli Studi di Padova</p>	<p><i>Implicit emotion regulation in clinical and health psychology: The key role of defense mechanisms</i></p> <p><b>Proponente:</b> Mariagrazia Di Giuseppe Università degli Studi di Roma Tor Vergata</p> <p><b>Discussant:</b> Fabio Madeddu Università degli Studi di Milano-Bicocca</p>	<p><i>[SIMPOSIO E-CARE] Psychological well-being, inclusion, and adaptation: Multidisciplinary perspectives on health, identity, and challenges in academia</i></p> <p><b>Proponente:</b> Alessandra Provera Alma Mater Studiorum Università di Bologna</p> <p><b>Discussant:</b> Giovanna Esposito Università degli Studi di Napoli Federico II</p>	
	<b>Aula Magna Palazzo Manzoni</b>	<b>Sala Adunanze Palazzo Manzoni</b>	<b>Aula II Palazzo Manzoni</b>	<b>Aula III Palazzo Manzoni</b>	
	<p><i>[SIMPOSIO E-CARE] Attachment and mentalization: Methodological advances and clinical implications in different contexts</i></p> <p><b>Proponente:</b> Tommaso Trombetta Università di Torino</p>	<p><i>Unlocking new frontiers in and towards emerging adulthood: navigating contextual challenges and age-specific insights</i></p> <p><b>Proponenti:</b> Daniela Di Riso Università degli Studi di Padova</p> <p>Marina Miscioscia</p>	<p><i>New frontiers of assessment: Tools and perspectives in psychopathology</i></p> <p><b>Proponenti:</b> Patrizia Velotti Sapienza Università di Roma</p> <p>Guyonne Rogier Università Unicamillus</p>	<p><i>When a parent is born: A screening and intervention model for the prevention of psychosocial risk factors during pregnancy</i></p> <p><b>Proponenti:</b> Maria Rita Infurna Università degli Studi di Palermo</p> <p>Linda A. Antonucci</p>	

	<p><b>Discussant:</b> Agostino Brugnera Università degli Studi di Bergamo</p>	<p>Università degli Studi di Padova</p> <p><b>Discussant:</b> Claudia Mazzeschi Università degli Studi di Perugia</p>	<p><b>Discussant:</b> Laura Parolin Università degli Studi di Milano-Bicocca</p>	<p>Università degli Studi di Bari Aldo Moro</p> <p><b>Discussant:</b> Renata Tambelli Sapienza Università di Roma</p>
	<p><b>Aula 11</b> <b>Palazzina Tartaruga</b></p>	<p><b>Aula 12</b> <b>Palazzina Tartaruga</b></p>	<p><b>Aula 13</b> <b>Palazzina Tartaruga</b></p>	
	<p><i>Cultural differences in clinical, social and health services</i></p> <p><b>Proponenti:</b> Sara Mondini Università degli Studi di Padova</p> <p>Antonio Ludici Università degli Studi di Padova</p> <p><b>Discussant:</b> Stefano Maria Carta Università degli Studi di Cagliari</p>	<p><i>Group methodology in clinical and non-clinical setting</i></p> <p><b>Proponente:</b> Giovanna Celia UniPegaso</p> <p><b>Discussant:</b> Giorgia Margherita Università degli Studi di Napoli Federico II</p>	<p><i>The multiple declinations of real and virtual aggressiveness on sexual wellbeing</i></p> <p><b>Proponente:</b> Erika Limoncin Sapienza Università di Roma</p> <p><b>Discussant:</b> Daniele Mollaioli Università degli Studi di Messina</p>	
<b>SESSIONI TEMATICHE IN PARALLELO</b>				
11.15-13.00	<b>Aula II</b> <b>Palazzo Florenzi</b>		<b>Aula III</b> <b>Palazzo Florenzi</b>	
	<p>Emerging Issues in Gender and Sexuality</p> <p><b>Chair:</b> Luca Rollè Università degli Studi di Torino</p>		<p>Contemporary Clinical and Social Issues</p> <p><b>Chair:</b> Silvia Casale Università degli Studi di Firenze</p>	
13.00-14.15	<b>Pausa Pranzo</b>			
13.00-14.15	<b>SESSIONE POSTER INTERATTIVA</b> Palazzo Florenzi			
<b>SIMPOSI IN PARALLELO</b>				
14.15-16.00	<b>Aula Tesi</b> <b>Palazzo Florenzi</b>	<b>Aula Magna</b> <b>Palazzo Florenzi</b>	<b>Aula IV</b> <b>Palazzo Florenzi</b>	<b>Gipsoteca</b>
	<p><i>The perspective of clinical psychology on Diabetes care: Current and future dimensional trajectories</i></p> <p><b>Proponente:</b> Anna Lucia Ogliari Università Vita-Salute San Raffaele</p> <p><b>Discussant:</b> Giorgia Margherita Università degli Studi di Napoli Federico II</p>	<p><i>From understanding to treatment: Emerging challenges across behavioral addictions</i></p> <p><b>Proponenti:</b> Silvia Casale Università degli Studi di Firenze</p> <p>Maria Di Blasi Università degli Studi di Palermo</p>	<p><i>Including dads, strengthening families: Addressing fathers' mental health and role in caregiving</i></p> <p><b>Proponenti:</b> Bianca Filippi Università degli Studi di Padova</p> <p>Elisa Mancinelli Università degli Studi di Padova</p>	<p><i>Pathways to psychosis: Environmental risk factors, psychological processes, and early care</i></p> <p><b>Proponenti:</b> Lucia Sideli LUMSA Università di Roma</p> <p>Tommaso Boldrini Università Telematica Pegaso</p>

		<b>Discussant:</b> Valentina Boursier <i>Università degli Studi di Napoli Federico II</i>	<b>Discussant:</b> Michele Giannotti <i>Università degli Studi E-CAMPUS</i>	<b>Discussant:</b> Andrea Fossati <i>Università Vita-Salute San Raffaele</i>
	<b>Aula Magna Palazzo Manzoni</b>	<b>Sala Adunanze Palazzo Manzoni</b>	<b>Aula 11 Palazzina Tartaruga</b>	<b>Aula 12 Palazzina Tartaruga</b>
	<i>The child in hospital: The clinical psychological approach in childhood</i>  <b>Proponente:</b> Valeria Carola <i>Sapienza Università di Roma</i>  <b>Discussant:</b> Biancarosa Volpe <i>Università degli Studi di Padova</i>	<i>LGBT+ stigma and discrimination seen from multiple perspectives</i>  <b>Proponente:</b> Luca Rollè <i>Università degli Studi di Torino</i>  <b>Discussant:</b> Vincenzo Bochicchio <i>Università della Calabria</i>	<i>Non-response and drop-out in psychotherapy of borderline personality disorder</i>  <b>Proponente:</b> Irene Messina <i>Università Mercatorum</i>  <b>Discussant:</b> Antonino Carcione <i>Università degli Studi "Guglielmo Marconi"</i>	<i>The critical role of longitudinal studies in the perinatal period: Insights from diverse contexts</i>  <b>Proponenti:</b> Laura Vismara <i>Università degli Studi di Cagliari</i>  Anna Maria Della Vedova <i>Università degli Studi di Brescia</i>  <b>Discussant:</b> Erica Neri <i>Alma Mater Studiorum Università di Bologna</i>
<b>SESSIONI TEMATICHE IN PARALLELO</b>				
14.15-16.00	<b>Aula II Palazzo Florenzi</b>		<b>Aula III Palazzo Florenzi</b>	
	New Perspectives on Trauma and Dissociation  <b>Chair:</b> Adriano Schimmenti <i>Università degli Studi di Enna Kore</i>		Contemporary Advances in Clinical Interventions  <b>Chair:</b> Silvia Salcuni <i>Università degli Studi di Padova</i>	
16.00-16.30	<b>Coffee Break</b> Palazzo Florenzi			
16.30-18.00	<b>Assemblea soci e Premiazione</b> <b>CHIUSURA CONGRESSO</b> Aula Magna - Palazzo Florenzi			
20.30	<b>Cena Sociale</b>			

## PROGRAMMA DETTAGLIATO

### PRE-CONFERENCE

Sala dei Notari - Piazza IV Novembre  
**Mercoledì 17 settembre 2025**

15.30-18.00

#### APERTURA DEI LAVORI

**15.30 – 15.45**

Vittoria Ferdinandi – *Sindaca Comune di Perugia*

#### TAVOLA ROTONDA

**15.45 – 18.00**

#### ***I SERVIZI AL SERVIZIO DEL BENESSERE PSICOLOGICO NEI CONTESTI TERRITORIALI: ESPERIENZE, AZIONI, SINERGIE***

**Chair:** Piero Porcelli – *Presidente Comitato Esecutivo AIP-Sezione Psicologia Clinica e Dinamica (Università "G. D'Annunzio" di Chieti-Pescara)*

#### **Intervengono:**

Sergio Sottani – *Procuratore Generale della Repubblica presso la Corte d'Appello di Perugia*

Daniela Donetti – *Direttrice Salute e Welfare Regione Umbria*

Federico De Salvo – *Consigliere delegato al benessere psicologico Comune di Perugia*

Laura Berretta – *Presidente Ordine degli Psicologi Regione Umbria*

Marco Grignani – *Direttore Dipartimento Salute Mentale USL Umbria 1*

Claudia Mazzeschi – *Professoressa di Psicologia Dinamica e Coordinatrice del Comitato Scientifico Locale, Università degli Studi di Perugia*

#### **Conclusioni**

Massimiliano Marianelli – *Direttore Dipartimento di Filosofia, Scienze Sociali, Umane e della Formazione, Università degli Studi di Perugia*

<b>Giovedì 18 settembre</b>															
9:00 – 11.00	<p style="text-align: center;"><b>APERTURA DEL CONGRESSO</b> San Francesco al Prato</p> <p style="text-align: center;"><b>INTRODUCONO I LAVORI:</b></p> <p style="text-align: center;"><i>Comitato Scientifico Nazionale e Comitato Scientifico Locale, AIP - Sezione di Psicologia Clinica e Dinamica</i></p> <p style="text-align: center;"><b>SALUTI DELLE AUTORITÀ:</b></p> <p style="text-align: center;">Maurizio Oliviero – <i>Rettore Università degli Studi di Perugia</i></p> <p style="text-align: center;">Stefania Proietti – <i>Presidente Regione Umbria</i></p> <p style="text-align: center;">Vittoria Ferdinandi – <i>Sindaco del Comune di Perugia</i></p> <p style="text-align: center;">Massimiliano Marianelli – <i>Direttore Dipartimento di Filosofia, Scienze Umane, Sociali e della Formazione</i></p> <p style="text-align: center;">Maria Antonietta Gulino – <i>Presidente Consiglio Nazionale dell'Ordine degli Psicologi-CNOP</i></p> <p style="text-align: center;">Laura Berretta – <i>Presidente Ordine degli Psicologi della Regione Umbria</i></p> <p style="text-align: center;">Fortunata Pizzoferro – <i>Presidente Ente Nazionale di Previdenza ed Assistenza per gli Psicologi-ENPAP</i></p> <p style="text-align: center;">Sergio Salvatore – <i>Presidente Associazione Italiana di Psicologia-AIP</i></p>														
11.00-12.30	<p style="text-align: center;"><b>EVENTO DI APERTURA</b></p> <p style="text-align: center;">Roberto Cippitani <i>Università degli Studi di Perugia</i> <i>Direttore della Cattedra ISAAC (Individual Rights in Scientific Research and Cooperation), Facultad de Derecho, UNED- Universidad Nacional de Educación a Distancia (Madrid)</i></p> <p style="text-align: center;">“Fare ricerca in Europa. Spazi, libertà, criticità per la psicologia clinica e dinamica”</p> <p style="text-align: center;"><b>Discussione</b></p>														
12.30-14.00	<b>Pausa Pranzo</b>														
12.30-14.00	<p style="text-align: center;"><b>PRIMA SESSIONE INTERATTIVA POSTER</b> <b>*candidati al Premio Miglior Poster</b> Palazzo Florenzi</p> <table border="1" style="width: 100%; border-collapse: collapse;"> <tbody> <tr> <td style="width: 25%;">Amoroso A.</td> <td>Unpacking couples therapy: a qualitative exploration of the clinical consultation phase, therapeutic alliance, and dropout *</td> </tr> <tr> <td>Anderle F.</td> <td>Executive functions and autistic traits in autistic children and adolescents: the influence of cognitive abilities *</td> </tr> <tr> <td>Bevacqua E., Minardo M., Guameri C.</td> <td>The relationship between child maltreatment, traumatic symptoms, and premenstrual disorders in Italian sample *</td> </tr> <tr> <td>Bruno S., Buonanno A., Brunone L., Giacobbe L., Resta E., Romanelli P.</td> <td>Assessing Suicidal Ideation in Clinical Sample: The Role of Dissociation dimensions and Diagnosis</td> </tr> <tr> <td>Canalella E., Cavalli R.G.</td> <td>A Systematic Review of CNM and Attachment Theory</td> </tr> <tr> <td>Castrucci L., Mignè E., Febraro F.</td> <td>Emotional dysregulation and cognitive deficit: a pilot study investigates the use of thinking through images as a tool to improve emotional management and reduce dysfunctional behaviors *</td> </tr> <tr> <td>Cavallo J., Micale S., Costanzo A.*</td> <td>Mapping Countertransference: Comparing Emotional Responses in the Treatment of DID and Other Disorders *</td> </tr> </tbody> </table>	Amoroso A.	Unpacking couples therapy: a qualitative exploration of the clinical consultation phase, therapeutic alliance, and dropout *	Anderle F.	Executive functions and autistic traits in autistic children and adolescents: the influence of cognitive abilities *	Bevacqua E., Minardo M., Guameri C.	The relationship between child maltreatment, traumatic symptoms, and premenstrual disorders in Italian sample *	Bruno S., Buonanno A., Brunone L., Giacobbe L., Resta E., Romanelli P.	Assessing Suicidal Ideation in Clinical Sample: The Role of Dissociation dimensions and Diagnosis	Canalella E., Cavalli R.G.	A Systematic Review of CNM and Attachment Theory	Castrucci L., Mignè E., Febraro F.	Emotional dysregulation and cognitive deficit: a pilot study investigates the use of thinking through images as a tool to improve emotional management and reduce dysfunctional behaviors *	Cavallo J., Micale S., Costanzo A.*	Mapping Countertransference: Comparing Emotional Responses in the Treatment of DID and Other Disorders *
Amoroso A.	Unpacking couples therapy: a qualitative exploration of the clinical consultation phase, therapeutic alliance, and dropout *														
Anderle F.	Executive functions and autistic traits in autistic children and adolescents: the influence of cognitive abilities *														
Bevacqua E., Minardo M., Guameri C.	The relationship between child maltreatment, traumatic symptoms, and premenstrual disorders in Italian sample *														
Bruno S., Buonanno A., Brunone L., Giacobbe L., Resta E., Romanelli P.	Assessing Suicidal Ideation in Clinical Sample: The Role of Dissociation dimensions and Diagnosis														
Canalella E., Cavalli R.G.	A Systematic Review of CNM and Attachment Theory														
Castrucci L., Mignè E., Febraro F.	Emotional dysregulation and cognitive deficit: a pilot study investigates the use of thinking through images as a tool to improve emotional management and reduce dysfunctional behaviors *														
Cavallo J., Micale S., Costanzo A.*	Mapping Countertransference: Comparing Emotional Responses in the Treatment of DID and Other Disorders *														

Cinquegrana V., D'Amico M., Lombardo C.	Childhood Emotional Neglect and Binge Eating in adulthood: the mediation role of psychopathology and body dissatisfaction
Colpizzi I.	Is Lower Self-Esteem a Necessary Condition for Eating Disorder Symptoms? *
Cruciani G., Mezzalana S.	Discrimination and the role of self-stigma and barriers to healthcare access in LGBTQ+ individuals' quality of life: A comparative mediation model *
Della Casa V., Battistini M.*	Healthcare, Social Support, and Mental Health in Transgender and Gender Diverse Youth: A Person-Centered Study *
Di Caro A.V., Scalone A.	The Developmental Roots of Maladaptive Personality Domains: The Role of Adult Attachment Styles and Defense Mechanisms *
Di Perna M., Di Lella R., Mezzapesa M.	Cognitive Reappraisal and Quality of Life: The Mediating Role of Depressive Symptoms in Hematological Patients *
Dockerty G., Innocenti M., De Micco G., Zjalic D., Lombardi G.S., Perilli A., Congedo G., Di Russo M., Bruno S., Cadeddu C., Fioravanti G.	Exploring climate change anxiety and eco-anxiety among adolescents: the psychometric properties of the Italian Climate Change Anxiety Scale and Hogg Eco-Anxiety Scale
Doroldi D., Spitoni G., Del Casale A.	Sexual functioning and problematic sexuality in subjects with and without psychotic risk: a pilot study
Frisina S., Bianchi V.A., Casarino V., Camezzana E.	Exploring the Role of Attachment in Rheumatologic Conditions: A Systematic Review
Incardona R.M.	Effects of virtual reality on fear and pain management in pediatrics: The AVATAR Project *
Marchese E.V., Melita A.	Dirty Minds and Powerful Drives: An Exploration of the Origins of Dark Triad Traits *
Mascanzoni M., Di Lucente L., Luciani A., Tamburella F., Iosa M., Pisani v., Caretti V., Scivoletto G.	The Role of Psychological Variables in Predicting Rehabilitation Outcomes After Spinal Cord Injury: An Artificial Neural Networks Study
Massari M.G., Scaramastra M.O.	Through the looking glass: an analysis of physicians' narratives on experiencing illness as patients or caregivers *
Matiz A., Scaggiante B., Ferrarin E., Bortol M., Crescentini C.	Effects of mindfulness training on emotional distress, hope, and mind-wandering of breast cancer survivors: a randomized controlled trial
Pistorio M.L.	The first Italian uterus transplantation and the desire for motherhood beyond biological boundaries: A case report *
Rossi T., Rossi C.	Exploring AI's potential in deciphering emotional expression in psychotherapy process
Saviano E.	Mindfulness in Italian Schools: A Systematic Review for Integration into Clinical and Educational Practice *
Sciabica G.M., Ragona A.	Understanding the relationship between time attitudes and emotion regulation strategies in a sample of young adults: a Latent Profile Analysis *
Scognamiglio C., Lamberti Zanardi A., Cinquegrana V.	Preliminary analysis of the Italian validation of the Child PTSD Symptom Scale for DSM-5 (CPSS-5)
Solorzano C.S., Di Benedetto M.G., Spinoni M., Rosa M., Biaggi A., Cattaneo A.	The role of perceived stress in the link between trauma history and antenatal mental health: a mediation model
Trani, L., Greco, A.G., Egidi, F.	Doping prevention in high school students: evidence from a chatbot assisted educational intervention
Trentin S., Florean I., Penolazzi B.	Environmental Sensitivity and Psychological Wellbeing Outcome: The Mediating Role of Coping Styles *

**SIMPOSI IN PARALLELO**

14.00-15.45 Aula Tesi Palazzo Firenze	Cognitive, affective, and neural mechanisms of depression vulnerability: Evidence from high-risk studies	<p><b>Proponenti:</b> Claudio Imperatori <i>Università Europea di Roma</i></p> <p>Rita B. Ardito <i>Università di Torino</i></p> <p>Simone Messerotti Benvenuti</p>	<p>De Rossi E., Allegrini G., Farina B., Imperatori C.</p>	<p>Familial risk for depression is associated with abnormal fronto-limbic connectivity: a resting state EEG study</p>
			<p>Marchetti I., Angeleri R., Bernardis P.</p>	<p>Depressive Symptoms, Childhood Experiences, and Parental Bonding modulate the late positive potential neural</p>

		Università degli Studi di Padova		index of emotional reactivity
		<b>Discussant:</b> Carlo Lai Sapienza Università di Roma	Dell'Acqua C., Mogni V., Messerotti Benvenuti S.	Affective processing in depression risk: insights from ERPs
			Carbone G., Lo Presti A, Adenzato M, Ardito R. B.	From risk to resilience: The moderating role of perceived social support in the relationships between adverse childhood experiences, emotional dysregulation and depression
14.00-15.45 Aula Magna Palazzo Florenzi	Understanding and supporting patient decision-making in healthcare: Psychological determinants and tools across the clinical pathway	<b>Proponenti:</b> Denise Vagnini Università Cattolica del Sacro Cuore di Milano  Federica Bonazza Università Cattolica del Sacro Cuore di Milano  <b>Discussant:</b> Luca Rollè Università di Torino	Bonazza F., Molgora S.	Enhancing decision-making in the context of third-party reproduction: A qualitative study of couples' lived experience
			Lombardi L., Trumello C., Bramanti S.M., Ferrucci A., Babore A.	"The future is dark": Psychological complexity in preventive surgery decisions
			Lemmo D., Cuomo A., Bianco A., Di Donato A., Rocco N., Illario M., Iaccarino G.	Motivational Interviewing in the Post-Surgical Phase of Breast Cancer Treatment: Patterns of Resistance and Change in the Promotion of Adapted Physical Activity
			Vagnini D., Facchin F., Saita E.	Physical Activity to Safeguard Long-Term Quality of Life After Breast Cancer: A Pilot Study on Italian Women's Motivation and Decision-Making to Stay Active

14.00-15.45 Aula IV Palazzo Firenze	<i>Mind-body interventions and personalized medicine: integrated approaches to well-being</i>	<p><b>Proponente:</b> Francesca Grosso <i>Università Cattolica del Sacro Cuore di Milano</i></p> <p><b>Discussant:</b> Gian Mauro Manzoni <i>Università degli Studi di Pavia</i></p>	Grosso F., Facchin F., Pagnini F.	Mindfulness and placebo in the treatment of infertility: a feasibility study
			Oliva F., Malandrone F., Bianchi S., Ottaviano M., Carli V., Valenza G., Scilingo E.P.,	Breathe In, Stress Out: How e-Mindfulness shapes HRV in Cancer Patients
			Malandrone F., Urru S., Berchiolla P., Rossini P.G., Bianchi S., Ottaviano M., Gonzalez-Martinez S., Carli V., Valenza G., Scilingo E.P., Carletto S., Ostacoli L.	Exploring the effects of variety and amount of mindfulness practices on depression, anxiety, and stress symptoms: a longitudinal study on a mental health-focused eHealth system for breast and prostate cancer patients.
			Mura F., Sutori S., Eliasson E.T., Catrambone V., Gascó Ortiz V., Todorov I., Hadlaczky G., Cardi V., Mioni G., Alcañiz Raya M., Van Wassenhove V., Valenza G., Carli V., Gentili C.	Innovative Virtual Reality Interventions for Mood Disorders: A Randomized Controlled Trial of Heart Rate Variability Biofeedback and Time Perception Recalibration
14.00-15.45 Gipsoteca	<i>SMART project: Promoting awareness and healthy social media use in mid-adolescents</i>	<p><b>Proponente:</b> Elisa Delvecchio <i>Università degli Studi di Perugia</i></p> <p><b>Discussant:</b> Silvia Casale <i>Università degli Studi di Firenze</i></p>	Poli S., Muscolino A., De Caro E.F., Donisi V. e il gruppo SMART	Understanding and Addressing Problematic Social Media Use through the SMART Project: A Systematic Review of Risk/Protective Factors, and Interventions
			De Caro E.F., Pagano L.P., Ghizzoni G., Iorio E., Delvecchio E. e il gruppo SMART	Problematic social media use and self-esteem: The role of preference of online social interaction
				Identifying Profiles of Maladaptive Social

			Brugnera A., Poli S., Nembrini G. e il gruppo SMART	Media Behavior in Mid-Adolescents: A Latent Profile Approach
			Salerno L., Pepi A., Bettoni D., Giordano C., Aiello R., Donisi V. e il gruppo SMART	SMART App: Development and Preliminary Feasibility Assessment of a Mobile Application to Promote Healthy Social Media Use and addressing Problematic Social Media Use Among Adolescents
14.00-15.45 Aula Magna Palazzo Manzoni	Effectiveness and mechanisms of change in the university individual counselling	<p><b>Proponenti:</b> Maria Francesca Freda <i>Università degli Studi di Napoli Federico II</i></p> <p>Giovanna Esposito <i>Università degli Studi di Napoli Federico II</i></p> <p><b>Discussant:</b> Fabio Madeddu <i>Università degli Studi di Milano-Bicocca</i></p>	Buratta L., Muzi L., De Ciechi A., Mirandi M., Moretti G., Mazzeschi C.	Assessing the effectiveness of University Counseling Services: A longitudinal study on changes in psychological well-being and personality functioning among university students attending the FOCUS-Psi
			Marchetti D., Cipriano A., Di Benedetto S.	Follow-up data of the M-SCPA project at G. d'Annunzio University of Chieti-Pescara: A survey on psychological counseling with university students
			Fortunato A., Franchini C., Morelli M., Chirumbolo A., Andreassi S., Speranza A.M.	Supporting Student Mental Health: The Effectiveness of University Counseling Services
			Esposito G., Paseggia R., Di Natale M.R., Micillo E.	The effectiveness of individual university counselling: the role of mentalization and emotion regulation strategies

<p>14.00-15.45 Sala Adunanze Palazzo Manzoni</p>	<p><i>Parenthood beyond the journey: Psychological perspectives on families formed through assisted reproductive technologies</i></p>	<p><b>Proponenti:</b> Alessandra Santona <i>Università degli Studi di Milano-Bicocca</i></p> <p>Chiara Fusco <i>Università degli Studi di Milano-Bicocca</i></p> <p><b>Discussant:</b> Elena Vegni <i>Università degli Studi di Milano – La Statale</i></p>	<p>Tacchino C., Velotti P.</p>	<p>The Infertility History Interview (IHI): a psychodynamically informed coding system</p>
			<p>Bonazza F., Molgora S.</p>	<p>Decisional Conflict in patients undergoing Assisted Reproductive Technology (ART) treatment: the role of Shared Decision Making</p>
			<p>Fusco C., De Carli P., Berruti V., Santona A.</p>	<p>This Close: parental disclosure of gamete donation in Italian donor-conceived families</p>
			<p>Quintigliano M., Profeta V., Rossi M., Saoudi B., Berruti V.</p>	<p>Psychological Experiences of Adults Born Through Donor Conception: Identity Exploration and Origin Discovery</p>
<p>14.00-15.45 Aula I Palazzo Manzoni</p>	<p><i>Well-being, joy, and euphoria: (Trans)affirmative approaches to the psychological health of trans and nonbinary people in clinical practice and research</i></p>	<p><b>Proponenti:</b> Fau Rosati <i>Sapienza Università di Roma</i></p> <p>Maric Martin Lorusso <i>Alma Mater Studiorum Università di Bologna</i></p> <p><b>Discussant:</b> Marina Miscioscia <i>Università degli Studi di Padova</i></p>	<p>Anzani A., Prunas A.</p>	<p>“Queering the Body” a Group Therapy Program in Promoting Body Connection and Euphoria: Practice-Based Pilot Study</p>
			<p>Giovanardi G., Di Giannantonio B., Noto F., Di Chiano S., Delli Paoli E., Lombardo F.</p>	<p>Hormones and Identity: Lived Experiences of Gender-Affirming Care</p>
			<p>Rosati F., Commone C., Baiocco R., Pistella J.</p>	<p>Exploring Microaffirmation Experiences and Their Impact Among Nonbinary Individuals: A Qualitative Approach</p>
			<p>Lorusso M.M., Albanesi C.</p>	<p>From Challenge to Pride: Parents' Journeys of Belonging in the TNB Community</p>

<p>14.00-15.45 Aula II Palazzo Manzoni</p>	<p><i>Unraveling Maladaptive Daydreaming: Psychological Mechanisms, Online Narratives, and Comorbidities Bridging Process and Outcome Research in Clinical Interventions</i></p>	<p><b>Proponenti:</b> Rachele Mariani <i>Sapienza Università di Roma</i></p> <p>Alessandro Musetti <i>Università degli Studi di Parma</i></p> <p><b>Discussant:</b> Adriano Schimmenti <i>Università degli Studi di Enna "Kore"</i></p>	<p>Caffieri A., Margherita G.</p>	<p>Selves displaced elsewhere: A Network Analysis on Maladaptive Daydreaming, Dissociation, and Online Self-experience</p>
			<p>Ghinassi S., Bocci Benucci S.</p>	<p>The role of psychological distress in maladaptive daydreaming among individuals with vulnerable narcissistic traits as a consequence of parental overcontrol</p>
			<p>Renzi A., Nimbi F. M., Mariani R.</p>	<p>Exploring the Links Between Maladaptive Daydreaming, Hypersexuality and Social Network Addiction: A Study on the Mediating Role of Narcissism</p>
			<p>Sukhija V.J., La Torre A., Salcuni S.</p>	<p>Delving into Online Narratives of Maladaptive Daydreaming: A Qualitative Study across a Maladaptive Daydreaming Facebook Community</p>
<p>14.00-15.45 Aula III Palazzo Manzoni</p>	<p><i>Bridging Process and Outcome Research in Clinical Interventions</i></p>	<p><b>Proponente:</b> Cesare Cavalera <i>Università Cattolica del Sacro Cuore di Milano</i></p> <p><b>Discussant:</b> Stefania Cella <i>Università degli Studi della Campania "Luigi Vanvitelli"</i></p>	<p>Liccione D.</p>	<p>Investigation of the Psychotherapeutic Process Through AI-Aided Topic Modeling of Therapy Sessions</p>
			<p>Cotardo F., Fernandez Revele C.I., Carletto S.</p>	<p>Evaluating Process and Outcome Factors in Eye Movement Desensitization and Reprocessing Therapy: The PROCESS-EMDR Study Protocol in Italy</p>

			Rossini P.G., Kealy D., White E., McCollum J., Li E., Silberschatz G.	Listen to me: the patient's conscious coaching communications from the perspective of the Control Mastery Theory
			Cavalera C., Incerti A.	Clinical Outcomes and Therapeutic Processes in Group EMDR for Parents of Children with Neurodevelopmental Disorders
14.00-15.45 Aula 11 Palazzina Tartaruga	Understanding subjectivity in the suicidal process: Affects, meanings, and personality functioning	<p><b>Proponente:</b> Riccardo Williams Sapienza Università di Roma</p> <p><b>Discussant:</b> Laura Muzi Università degli Studi di Perugia</p>	Moselli M., Quassoni A., D'Agostino A.	Emptiness, suicidality, and pathological personality traits: An exploratory study
			Calati R., Bianco F., Courtet P., Olié E., López-Castroman J., Zeppegno P., Gramaglia C., Madeddu F., Romano D.	Two paths to suicide risk: Pain hypersensitivity vs. dissociative states
			Wisniewsky A., Williams R.	Assessing suicidal motivations: bridging research and clinical practice with a clinician-report tool
			Borroni S.	Predicting nonsuicidal self-Injury and suicidal risk: the role of personality impairment and dysfunctional personality traits in a sample of consecutively admitted psychotherapy patients
14.00-15.45 Aula 12 Palazzina Tartaruga	Psychological and therapeutic processes underlying mental health	<p><b>Proponenti:</b> Gabriella Martino Università degli Studi di Messina</p> <p>Chiara Spatola</p>	Conversano C., Ciacchini R., Lazzarelli A., Orrù G., Villani S., Viti A., Gemignani A.	Contemplative practices and psychological well-being in university students: a comparative study of qigong and mindfulness group training

		Università degli Studi di Messina	Di Giuseppe M.	Defense mechanisms in individuals with depression: a network analysis
		<b>Discussant:</b> Gianluca Castelnuovo Università Cattolica del Sacro Cuore di Milano	Ciacchini R., Nardelli M., Di Marco A., Orrù G., Viti A., Scilingo E.P., Gemignani A., Conversano C.	Thriving through connections: a multimodal pilot study on psychological and physiological effects of mindfulness (MBSR) in infertile couples
			Spatola C., Rapelli G., Epifania O. M., Martino G.	The interactive effects of psychological inflexibility and self-compassion in predicting anxiety symptoms
14.00-15.45 Aula 13 Palazzina Tartaruga	Assessment and intervention in forensic contexts: integrating tradition and innovation	<b>Proponenti:</b> Antonia Sorge Università Cattolica del Sacro Cuore di Milano	Sorge A., Bianchi G., Tamanza G., Saita E.	Mitigating inmate stress and aggression through virtual natural environments
		Giovanni Borrelli Università degli Studi "Guglielmo Marconi"	Lombardo C., Iacolino C., Salvo B., Muscatello M.R.A., Zuccalà F., Scaramuzzino C.	Thought disorder index applied to Rorschach protocols
		<b>Discussant:</b> Elena Infantino Sapienza Università di Roma	Ricci M.E., Infantino E., Galasso S., Gubbiotti P., Langher V.	Exploring Latent Dimensions in the Discourse of Violent Offenders: A Computer-Assisted Analysis of Clinical Evaluations
			Borrelli G., Scognamiglio C., Perrella R.	The use of Artificial Intelligence in Forensic Psychiatry: A Systematic Review
<b>SESSIONI TEMATICHE IN PARALLELO</b>				
14.00-15.45 Aula II Palazzo Florenzi	Addictive Behaviors:	<b>Chair:</b>	Caponnetto P., Prezzavento G. C.	Problematic TikTok Use as potential Behavioural Addiction: integrated findings from a systematic review and qualitative research

	Innovative Trends in Research and Clinical Assessment	Patrizia Velotti <i>Sapienza Università di Roma</i>	Altavilla D., Deriu V., Chiera A., Adornetti I., Luciani F., Garello S., Ferretti F.	Narrative identity in addiction disorders: preliminary multi-dimensional analysis of narrative coherence and episodic memory
			Blandizzi C., Bungaro N., De Vincenzo F., Cernuzio G., Innamorati M., Contardi A.	Food Addiction and Personality Traits: the role of emotional dysregulation and self-compassion in a moderated mediation model
			Gioia F.	Behavioral and substance dependencies: the role of evolutionary-relational and psychological domains and metacognitions in clinical and non-clinical Italian samples
			Giugovaz A., Marchetti I.	The necessary conditions for problematic alcohol use: A longitudinal analysis of personality traits
			Smeriglio R., Castiglione G., Di Nuovo S.	Adult ADHD in patients with substance abuse
			Prezzavento G.C., Caponnetto P.	Substances use disorder in the Elderly population: a systematic review of prevalence, risk factors, and evidence-based treatments in Clinical Psychology
			Donati M. A., Serra E., Veronese V., Sanson F., Beccari C., Primi C.	How to measure risky use of Loot Boxes in pre-adolescents? Results with Italian middle school students by applying Item Response Theory to the Risky Loot Box Index
14.00-15.45		<b>Chair:</b>	Charpentier Mora, S., Bizzi F., Rospo F., Tironi M.	Who represents whom? A preliminary study on narrative linguistic characteristics, emotional and mentalizing competencies in the parent-child relationship
			Di Girolamo I., Bovero A.	Predicting Complicated Grief in Caregivers of End-of-life Cancer Patients
			Rollo S., Franciosa G., Dispoto E., Fanizza A.,	Detecting psychosocial types for mothers and partners in perinatal

Aula III Palazzo Florenzi	Caregiving and Perinatal Issues	Alessandra Babore <i>Università degli Studi "G. d'Annunzio" di Chieti- Pescara</i>	Asselti M. G., Pennacchio T. C.	depression: a study of machine learning
			Ponti L., Pigliapoco E., Damiani S., Smorti M.	Obstetric Violence in Italy: Findings from a Large-Scale Survey
			Zoia S., Leo I., Montemurro S., Gerola S., Cossu G., Henderson S.	Movement difficulties in children with autism: Insights from parents and clinicians
			Mineo R., Rini C., Sottile J., Riolo M.	Bonds: The Interplay Between Interpersonal and Intrapsychic Dimensions in Pregnant Women
			Carosi Arcangeli I., Di Prinzio F., Cozzolino M.	A Mind-Body Intervention (BWM-T) for Reducing Psychological Distress in Parents of Children and Adolescents with Type 1 Diabetes: A Pilot Study
15.45-16.15	<b>Coffee Break</b> Palazzo Florenzi			
15.45-16.15	<b>PROSEGUE PRIMA SESSIONE POSTER INTERATTIVA</b> Palazzo Florenzi			
	<b>TAVOLE ROTONDE IN PARALLELO</b>			
16.15-17.45 Aula Tesi Palazzo Florenzi	<b>LA PSICOLOGIA OSPEDALIERA: FORMAZIONE, FUNZIONI E PREROGATIVE</b>			
	<p><b>Proponente:</b> Giampaolo Nicolais (<i>Sapienza Università di Roma e Azienda Ospedaliero-Universitaria "Sant'Andrea"</i>)</p> <p><b>Intervengono:</b> Elena Vegni (<i>Università degli Studi di Milano - La Statale e ASST Santi Paolo e Carlo, Milano</i>) Biancarosa Volpe (<i>Università degli Studi di Padova</i>) Daniela De Berardinis (<i>Ospedale Fatebenefratelli Isola Tiberina Roma</i>)</p>			
16.15-17.45 Aula Magna Palazzo Florenzi	<b>LA RAPIDA EVOLUZIONE DELLA PROFESSIONE DI PSICOLOGO*</b>			
	<p><b>Proponente:</b> Claudio Gentili e Alessandra Simonelli (<i>Università degli Studi di Padova</i>)</p> <p><b>Intervengono:</b> Claudio Gentili (<i>Università degli Studi di Padova, Presidente del Collegio dei Docenti di Psicologia Clinica</i>) Alessandra Simonelli (<i>Università degli Studi di Padova, Presidente del Collegio dei Docenti di Psicologia Dinamica</i>) Sergio Salvatore (<i>Università del Salento, Presidente AIP</i>)</p> <p>Con la partecipazione di esponenti del CNOP, della Commissione tecnico-consulativa sulle scuole di psicoterapia del MUR e della Sezione di Psicologia Clinica e Dinamica di AIP.</p>			
	<b>* Tavola rotonda aperta a tutti gli iscritti al CNOP da remoto</b>			

<p>16.15-17.45 Gipsoteca</p>	<p style="text-align: center;"><b>COS'E' L'ERRORE IN PSICOTERAPIA?</b></p> <p><b>Proponente:</b> Piero Porcelli (<i>Università degli Studi "G. d'Annunzio" di Chieti-Pescara</i>)</p> <p style="text-align: center;"><b>Intervengono:</b>  Piero Porcelli (<i>Università degli Studi "G. d'Annunzio" di Chieti-Pescara</i>)  Benedetto Farina (<i>Università Europea di Roma</i>)  Gianluca Lo Coco (<i>Università degli Studi di Palermo</i>)</p>
<p>16.15-17.45 Aula Magna Palazzo Manzoni</p>	<p style="text-align: center;"><b>NUOVE FRONTIERE DELLA DIAGNOSI PSICODINAMICA*</b></p> <p><b>Proponente:</b> Vittorio Lingiardi (<i>Sapienza Università di Roma</i>)</p> <p style="text-align: center;"><b>Intervengono:</b>  Vittorio Lingiardi (<i>Sapienza Università di Roma</i>)  Alessandro Zennaro (<i>Università di Torino</i>)  Laura Muzi (<i>Università degli Studi di Perugia</i>)</p> <p style="text-align: center;"><b>* Tavola rotonda aperta a tutti gli iscritti al CNOP da remoto</b></p>
<p>16.15-17.45 Sala delle Adunanze Palazzo Manzoni</p>	<p style="text-align: center;"><b>THE MIND AS MEDICINE: RETHINKING CLINICAL PRACTICE AT THE MIND-BODY CROSSROADS</b></p> <p style="text-align: center;"><b>Proponenti e Interventi di:</b>  Francesco Pagnini (<i>Università Cattolica del Sacro Cuore di Milano</i>)  Arianna Palmieri (<i>Università degli Studi di Padova</i>)  Luca Ostacoli (<i>Azienda Ospedaliero-Universitaria "Città della Salute e della Scienza", Torino</i>)</p>
<p>18:30</p>	<p style="text-align: center;"><b>WALKING SOCIAL EVENT CON APERITIVO NELLE TERRAZZE DELLA CITTÀ</b></p>

**Venerdì 19 settembre**

**SIMPOSI IN PARALLELO**

<p>9.00-10.45 Aula Tesi Palazzo Firenze</p>	<p><i>Upgrading the Rorschach: Research and advances – 8th edition</i></p>	<p><b>Proponente:</b> Luciano Giromini <i>Università di Torino</i></p> <p><b>Discussant:</b> Claudia Mazzeschi <i>Università degli Studi di Perugia</i></p>	<p>Camelio M., Conti C., Di Crosta A., Palumbo R., Porcelli P.</p>	<p>Seeing emotion: eye-tracking insights into color responses in Rorschach with dIPFC modulation</p>
			<p>Mihura J. L., Milesi A., Görner K. J., Starin M.</p>	<p>Summary of Systematic Reviews and Meta-Analyses on the Interrater Reliability and Construct Validity of Contemporary Rorschach Systems</p>
			<p>Pasqualini S., Ales F., Pignolo C., Roma P.</p>	<p>Utilizing the Rorschach Performance Assessment System (R-PAS) to Detect Feigned Psychosis: Insights from a Simulation-Design Study</p>
			<p>Bosco F., Mazza C., Garufi Bozza G., Grappolini C.</p>	<p>Unmasking Positive Response Bias: How MMPI-3 and R-PAS Interact in High-Stakes Assessments</p>
<p>9.00-10.45 Aula Magna Palazzo Firenze</p>	<p><i>Contemporary issues and new challenges for problematic digital media use across generations. Precursors, consequences, and maladaptive maintenance functionings</i></p>	<p><b>Proponente:</b> Valentina Boursier <i>Università degli Studi di Napoli Federico II</i></p> <p><b>Discussant:</b> Adriano Schimmenti <i>Università degli Studi di Enna "Kore"</i></p>	<p>Bocci Benucci S., Casale S.</p>	<p>Exploring temporal associations between Problematic Social Network Use and Metacognitions, Boredom Proneness, Depressive Symptoms and Fear of Missing Out among Italian Adolescents: A Longitudinal study</p>
			<p>Bassi G., Valente A.</p>	<p>Fear of Missing Out in the Digital Era: Emotional and Behavioral Correlates in Young Adults</p>
			<p>Pezzi M., Zagaria A., Santoro G., Corsano P., Gori A., Musetti A.</p>	<p>Exploring the motivations linking solitary experiences to problematic social media use in young adults: A network analysis approach</p>

			Rega V., Boursier V.	Factors influencing parental mediation strategies. Testing the role of parents' digital skills, parents' perception of screen media risks, and children's problematic screen media use in a structural equation model
9.00-10.45 Aula IV Palazzo Firenze	Exploring the complexities of clinical practice: The therapist effect	<p><b>Proponenti:</b> Annalisa Tanzilli Sapienza Università di Roma</p> <p>Marianna Liotti Sapienza Università di Roma</p> <p><b>Discussant:</b> Antonino Carcione Università degli Studi "Guglielmo Marconi"</p>	Liotti M.	Why We Become Therapists: Personal Factors, Clinical Functioning, and the Weight of Early Experiences
			Rossi C.	Exploring Therapists' Dynamics, Countertransference and Therapeutic Alliance: A Longitudinal Study
			Di Giuseppe M.	The role of therapists' defense mechanisms in promoting changes in patients' defenses in psychoanalysis
			Tanzilli A., Guarino D., Fiorentino F., Gualco I.	The relationship among responsiveness, therapeutic alliance and depth of elaboration: a network analysis
9.00-10.45 Gipsoteca	Impact of acute and chronic diseases on psychological wellbeing in patients and caregivers throughout different life stages and identification of risk and protective factors	<p><b>Proponente:</b> Marta Tremolada Università degli Studi di Padova</p> <p><b>Discussant:</b> Eliana Tossani Alma Mater Studiorum Università di Bologna</p>	Spaggiari S., Ferraro V., Carraro S., Zanconato S., Di Riso D.	Pediatric Asthma: Unraveling the Psychological Dimensions Connected to Clinical Outcomes in Children and their Mothers
			Incardona R. M., Mastrandrea V., Cereda C., Biffi A., Tremolada M.	Parents of pediatric patients with oncohematological diseases: Screening of psychological symptoms and predictive factors associated with post-traumatic stress symptoms

			Verri V., Nicois F., Semeraro C., De Caro M. F., Taurino A.	Psychological variables and treatment in women with breast cancer
			Buratta L., Gizzi G., Cosenza A., Bruno G.	The Role of Emotional Eating in Binge Eating Behaviors Among Women with PCOS
9.00-10.45 Aula Magna Palazzo Manzoni	<i>Grief and loss in cancer: New research perspectives</i>	<p><b>Proponenti:</b> Vittorio Lenzo <i>Università di Catania</i></p> <p>Chiara Fioretti <i>Università degli Studi di Salerno</i></p> <p><b>Discussant:</b> Lucia Sideli <i>LUMSA Università di Roma</i></p>	Lenzo V., Bordino V., Caneglias C., Cibelli F., Lombardo L.	Understanding suicide risk in bereaved caregivers: The role of insecure attachment in prolonged grief
			Giraldi E., Lai C., Luciani F., Lombardo L.	Toward a better understanding of prognostic awareness and its associations with psychosomatic variables in cancer patients
			Sauta M. D., Franzoi G. I., Granieri A.	Grief processing in caregiver of cancer patients: a longitudinal study
			Faggi D., Aprea G., Surrenti E., Fioretti C.	The patient's death as a Post-Traumatic Growth experience: a qualitative study
9.00-10.45 Sala Adunanze Palazzo Manzoni	<i>Empirical, methodological, and conceptual advances in assessing and treating eating disorders</i>	<p><b>Proponente:</b> Laura Muzi <i>Università degli Studi di Perugia</i></p> <p><b>Discussant:</b> Laura Parolin <i>Università degli Studi di Milano-Bicocca</i></p>	Aloi M., Rania M., Carbone E. A., de Filippis R., Rotella L., Segura Garcia C.	Early maladaptive schemas as core therapeutic targets in eating disorders and obesity: a schema therapy-informed network analysis
			Muzi L., Mirabella M., Franco A., Riboldi M., Tattini N., Rugo M. A.	Eating symptomatology, body uneasiness, and sexual identity: A latent profile analysis in clinical and non-clinical populations
			Longo P., Scaliti E., Panero M., Toppino F., Salis B., Martini M., Abbate-Daga G.	Mapping Interpersonal Space in Anorexia Nervosa: comparison with healthy control subjects and association with clinical variables

			Frisone F.	Reconceptualizing the body-self relationship in eating disorders: psychopathological models and the therapeutic potential of virtual reality
9.00-10.45 Aula I Palazzo Manzoni	Maternal and paternal affective disorders: Interpersonal and psychological pathways	<p><b>Proponente:</b> Sonia Mangialavori <i>Universitas Mercatorum</i></p> <p><b>Discussant:</b> Franco Baldoni <i>Alma Mater Studiorum Università di Bologna</i></p>	Mangialavori S., Villani V., Lisi G., Trincia V., Ducci G.	Childhood Trauma and Perinatal Depression in Couples: A Dyadic Study
			Cacioppo M., Fontana A., Topino E., Trani L., Ovidi A. R., Ducci G.	Parental Family Functioning and Dyadic Adjustment in First-Time Parents with Perinatal Depression: A Correlational Study
			Terrone G., Villani V., Lisi G., Trincia V.	Depression and Paternal Perinatal Disorders, Alexithymia and Personality
			Casu G., Giannotti M., Agostini F.	Understanding maternal vulnerability: Insecure attachment, coping strategies, and perinatal affective symptomatology
9.00-10.45 Aula II Palazzo Manzoni	Climate change: Threat to mind, emotions, and relationships	<p><b>Proponenti:</b> Nicola Carone <i>Università degli Studi di Roma Tor Vergata</i></p> <p>Maria Quintigliano <i>Università degli Studi di Roma Tor Vergata</i></p> <p><b>Discussant:</b> Maria Francesca Freda <i>Università degli Studi di Napoli Federico II</i></p>	Reho M.	Making sense of sustainability: the role of meaning-making in the relationship between environmental attitudes and behaviors
			Mirandi M., Delvecchio E., Garofalo C.	Psychological Profiles of Adolescents in relation to Climate Change Anxiety and Worry: The Role of Environmental Identity and Psychological and Emotional Difficulties
			Tracchegiani J., Carone N.	Regretting motherhood in the context of climate crisis: Developmental and environmental determinants
			Protopapa G., Fummo F.	Therapeutic work in the Anthropocene: an interpretative phenomenological analysis of clinicians' experiences

<p>9.00-10.45 Aula 11 Palazzina Tartaruga</p>	<p><i>Embodied journeys: Women's bodily experiences in life transitions and clinical conditions</i></p>	<p><b>Proponenti:</b> Silvia Cerea <i>Università degli Studi di Padova</i></p> <p>Chiara Sacchi <i>Università degli Studi di Padova</i></p> <p><b>Discussant:</b> Gianluca Castelnuovo <i>Università Cattolica del Sacro Cuore di Milano</i></p>	<p>Iannattone S., Cerea S.</p>	<p>Two Sides of the Mirror: Can Negative and Positive Body Image Coexist in Italian Adolescent Girls?</p>
			<p>Sacchi C., Arioli M., Consales A., Savoldi M., Macchi Cassia V.</p>	<p>Body and Bond: The Influence of Prenatal Interventions on Maternal Well-Being and the Mother- Infant Relationship</p>
			<p>Policardo G.R., Di Gesto C.</p>	<p>When Social Media Meets Chronic Illness: Instagram Appearance-based Activities, Social Comparison, and Functionality Appreciation in Women with Fibromyalgia</p>
			<p>Campedelli V.</p>	<p>Body Image in Clinical Hospital Settings: Research Perspectives in Obesity and Breast Cancer</p>
<p>9.00-10.45 Aula 12 Palazzina Tartaruga</p>	<p><i>A Multi-level Approach to Child Development and Family Dynamics in Caregiving</i></p>	<p><b>Proponenti:</b> Paola Rigo <i>Università degli Studi di Padova</i></p> <p>Michele Giannotti <i>Università degli Studi di Trento</i></p> <p><b>Discussant</b> Vincenzo Bochicchio <i>Università della Calabria</i></p>	<p>Gemignani M., Giannotti M., Rigo P., de Falco S.</p>	<p>Nurturing Bonds: Emotional Availability Among Italian Two-Mother Families</p>
			<p>Filippi B., Simonelli A.</p>	<p>Embodied parenting: the influence of maternal somatization and interoception sensitivity on early caregiving</p>
			<p>Nasti C., La Resta S., Di Biase R., Paternoster S., Senese V.P.</p>	<p>Implicit And Explicit Responses to Infant Emotional Cues And Maternal Caregiving Quality: Evidence From an Observational Study</p>
			<p>Bentenuto A., Perzolli S., Venuti P.</p>	<p>Parental Stress, Mental Health, and Child Traits: Exploring Differences and Associations in Italian Parents of Autistic Children</p>
<p>9.00-10.45 Aula 13 Palazzina Tartaruga</p>			<p>Caffieri A.</p>	<p>Living on shaking ground: the Role of Intolerance of Uncertainty, and Worries</p>

	[SIMPOSIO E-CARE]  <i>Traumatic and Adverse Experiences: Psychological and Physiological Implications</i>	<b>Proponente:</b> Valeria Saladino <i>Università "Magna Graecia" di Catanzaro</i>  <b>Discussant:</b> Paolo Valerio <i>Università degli Studi di Napoli Federico II</i>		on Pre-Traumatic Stress in Campi Flegrei population
			Giordano F., Calaresi D.	Longitudinal Dynamics of Emotional Abuse, Family Functioning, and Depressive Symptoms in Adolescence
			Lanzara R., Zito L.	The Relationship Between Childhood Traumatic Experiences and Gut Microbiota in Patients with Fibromyalgia: An Exploratory Study
			Santoniccò F., Paradiso M.N.	The role of LGBT+ heterosexual experiences in eating disorder risk: a psychological mediation model
<b>SESSIONI TEMATICHE IN PARALLELO</b>				
9.00-10.45 Aula II Palazzo Firenze	Integrative Perspectives on Emotional and Cognitive Functioning in Clinical and At-Risk Populations	<b>Chair:</b> Maria Catena Quattropani <i>Università degli Studi di Catania</i>	Ampollini S., Cigala A.	Altered Sensitivity to Intersensory Synchrony in Child Maltreatment: Implications for Inhibitory Control and Recovery Through Perceptual Training
			Maffoni M., Magnani A., Pierobon A., Torlaschi V., Mafferra A., Pasotti F., Dallochio C., Fundarò C.	A new screening tool for Subjective Cognitive Decline: preliminary data on validity and reliability of MASCoD
			Maffoni M., Magnani A., Pierobon A., Torlaschi V., Mafferra A., Pasotti F., Dallochio C., Fundarò C.	Executive Functions and Subjective Cognitive Decline: The Moderating Role of Depressive Symptoms
			Grosso F., Barbiani D., Pagnani F.	The role of attention in modulating the placebo effect
			Maniaci G., Daino M., Iapichino M., Giammanco A., Taormina C., Bonura G., Sardella Z., Cammareri P., Sberna E., Clesi M. F., Pitti E., Ardizzone	Neurophysiological and psychological effects of deep diaphragmatic breathing and affective touch following the TSST: an Individual Participant Data analysis from two

			G., Mannone C., Montalto F., Ferraro L., Gambino C. M., Ciaccio M., Rispoli L., La Cascia C., La Barbera D., Quattrone D.	Randomized Controlled Trials
			Di Giacomo D.	The self-efficacy perception in cardiovascular patients: a cohort study on the self-care management
			Porreca A., Simonelli A.	Child physical abuse potential, work-related burnout and executive functions in childcare workers: which associations?
			Russo F., Monticelli E., Blandizzi C., Garofalo M. R., Pitocco D., Contardi A.	Exploring the role of personality and emotional dysregulation in type 1 diabetes patients: what is the key process for the optimal metabolic control.
9.00-10.45 Aula III Palazzo Firenze	Applying Biopsychosocial Approaches in Clinical Settings	<b>Chair:</b> Piero Porcelli <i>Università degli Studi "G. d'Annunzio" di Chieti-Pescara</i>	Kotzalidis G., Brozzi C., Troccoli E., Iacovino R., Moffa F., Caprara D., Sparano A., Bellella D., Ferrarese D., Mazza M., Rossi M., Sani G.	The psychological dimension of chronicity
			Meneghini A. M., Tommasi F., Cunico L., Colledani D., de Cordova F.	Nurses' emotion (dis/)regulation, flexibility and compassion satisfaction: an empirical study
			Massari M. G., Mele A.	The role of psychology in hospital settings
			Caruso A., Latella G.	Prevalence and clinical correlates of Avoidant/Restrictive Food Intake Disorder (ARFID) in Inflammatory Bowel Disease: A Systematic Review
			Varallo, G., Scorza M., Ruggiero, G.M., Sassaroli, S.	The role of rumination, worry, and metacognitions in suicidal ideation in female individuals with fibromyalgia and obesity
			De Angelis M., Mercuri N. B., Fernandes M., Liguori C.	Adverse early-life experiences and epileptic seizures: The role of emotional dysregulation

			Basadonne I., Guiot C., Marocchini E., Giovagnoni C., Moioli F., Maorelli A., Riccardi M., Finotto G., Brondino N., Mancini M.	Participatory research in autism: A quali-quantitative study on diagnosis
			Panzeri A., Carraro E., Spoto A.	Exploring Psychological Dynamics in Gynecological Cancer: A Network Analysis of Italian Women
10.45-11.15	<b>Coffee Break</b> Palazzo Florenzi			
10-45-11.15	<b>SECONDA SESSIONE INTERATTIVA POSTER</b> *candidati al Premio Miglior Poster Palazzo Florenzi			
	Blasutto B.	Neuropsychiatric symptoms and their impact on cognitive functions: a systematic review in Parkinson' Disease *		
	Barlattani A.	Trauma, epistemic trust, reflective functioning, and somatic symptoms: a serial mediation model in emerging adults *		
	Boltri M., Ossino B., Brusa F., Cera G., Apicella E., Mendolicchio L.	Exploring Sexuality in Women with Binge Eating Disorder: an Interpretative Phenomenological Analysis		
	Bontempo D., Perazzini M., Perilli E.	Think Green, Act Green: The Psychological Pathways of Pro-Environmental Behaviours		
	Carraturo F., Abdoli M.	Shared vulnerabilities between eating disorder risk and hikikomori: a path analysis model examining the role of parental bonding, emotional dysregulation, social media use, and body investment *		
	Cavallaro A.	Exploring Social Anxiety in Virtual and Real Interactions: A Biometric Analysis of Physiological Responses *		
	Cecchetti S., Cavallo M.	Eye-tracking monitoring as a supporting tool for the clinical diagnosis of multiple sclerosis: A Scoping Review		
	Cionti L., Montanelli R., Tobia V., Bonfanti R., Ogliari A.	Executive Functions and Eating Behaviors: Summer-Camp Experience with Adolescents with Type 1 Diabetes		
	Cipollone E.	A Group-Based Psychoeducational Intervention Focused on Mentalization for the Psychological Well-Being of University Students: Preliminary Results from the Me.Mo Project *		
	Ferraris A., Lorenzoni A., Cimmino Picone V.	Beyond the Burden: Understanding Psychological Functioning in ALS Caregivers through a Psychodynamic Lens – A Comparative Case Study *		
	Geminiani C., Grazioli V.	Further Evidence of The Validity and Reliability of The MNARC Index Based on Personality Inventory for DSM-5 Short-Form in a Sample of Community-Dwelling Adolescents *		
	Giancola M., D'Amico S.	The association between personality and problematic social media use: A network approach		
	Giannini T., Tetecher L., Maucione S., Cocchiario T., Rago R.	Psychosexual aspects and gender differences in infertile couples seeking assisted reproductive treatment		
	Infantino E., Ricci M.E., Galasso S., Gubbiotti P., Langher V.	Assessing the Validity of the RSVP-2 for Evaluating Sexual Violence Risk in an Italian Forensic Context		
	Lamberti Zanardi A., Borrelli G., Perrella R.	The Italian validation of the children's version of the Reading the Mind in the Eyes Test. Preliminary analyses		
	Magliocca S., Bani M., Bellani M., Callegari C., Delle Fave A., Ghilardi A., Mirabella G., Maffei D., Mucci C., Piccioni C., Cancelli P., Rosina B., Simonetta S., Strepparava M.G., Trotti E., Profeta P., Testa S., Maravita A., Velasco V., Calati R., Madeddu F.	Risk and Protective Factors for Psychological Wellbeing in University Students Accessing Counseling Services: The PROBEN Project		
	Messina R., Mencarelli M., Chattat R., Fantini M.P., Carinci F., Di Bartolo P., REWINDER Study Group	Type 2 Diabetes, Psychological well-being, Depressive Symptoms and Diabetes Distress: examining their co-occurrence in the REWINDER study		
	Mignolli G., Colledan D., de Cordova F., Tommasi F., Meneghini A.M.	How the propensity to care for others informs behavioural tendencies toward people with disabilities		

Montanelli R., Cionfi L., Casartelli M.	Quality of Life in Adolescents with T1DM: The Impact of an Executive Function Enhancement Intervention *
Origlia G., Doroldi D., Limoncin E.	Hypersexual Behavior and Binge Eating: psychopathological factors evaluated according to gender
Orlandi M., Pratile D., Mensi M.	The Body as a Mirror of Adolescent Psychological Distress: A Comparative Multimethod Study
Perazzini M., Bontempo D., Giancola M.	Face-to-face or screen-to-screen: the role of therapeutic setting on psychotherapists' negative emotional experience after dropout *
Provera A., Provenzi L., Grumi S.	Exploring parental mind-mindedness in the context of neurodevelopmental disorders: a scoping review of parent's and child outcomes
Regnoli G.M.	Evaluating the Psychological Impact of War Beyond Conflict Boundaries: Design and Validation of the War Worry Scale and Its Implications for Italian Young Adults' Mental Health *
Ruotolo G., Conforti V., Lavegas T.	The Mediating Role of Mentalization in the Relationship Between Adverse Childhood Experiences, Emotional Dysregulation, and Dissociation: a Study on a Non-Clinical Sample of Italian Adults *
Ruotolo G., Conforti V., Lavegas T.	Association Between Moral Emotions and Post-Traumatic Stress Disorder: a Study on a Non-Clinical Sample of Italian Adults *
Sasso F.	Assessing uncertainty: a bibliometric analysis of trends and emerging themes from 2000 to 2025 *
Sondrio F.M., Boscaro L., Bianchi A., Amundsen E.M., Maffi L., Roveyaz D.	Assessing the continuities between adaptive and dysfunctional personality traits: Introducing the Big Five Inventory-2 (BFI-2)
Sorge A, Bianchi G., Vagnini D.	Promoting well-being among prison staff through virtual nature experiences *
Turolla F., Gramaglia C.M., Zanolì V., Probo M., Longo P., Caldirolì A., Abbate Daga G., Clerici M., Zeppegno P.	The Interpersonal Theory of Suicide in patients with Eating Disorders: a multicenter study
Urone C., Ancona D., Arcidicono E., Calabrese M., Gentile M., Giannone G., Graceffa G., Merendino R., Spanò D.M., Vicari S., Miano P.	Challenging Slut-Shaming in Adolescence: An Action Research Study in a Secondary School
Vizzini M.A.S., Renzi A., Marcoccia A., Guarino A., Cocchiari T., Rago R., Di Trani M.	Affect regulation capabilities, romantic attachment, pain perception and quality of life in women suffering from Systemic Sclerosis: Insights for a multidisciplinary model of care

**SIMPOSI IN PARALLELO DELLA MATTINA**

<p>11.15-13.00 Aula Tesi Palazzo Firenze</p>	<p><i>Enhancing Assessment in Psychiatry: The role of Childhood Neglect, Sensory Dysfunction, Group-Based Rehabilitation, and Evolution of the Self.</i></p>	<p><b>Proponente:</b> Francesco Oliva Università di Torino</p> <p><b>Discussant:</b> Marco Cavallo Università degli Studi E-CAMPUS</p>	Zurlo L., Cecchetto C., Gentili C., Dal Bò E.	Altered sensory processing across psychiatric disorders
			Minazzi G.A.	Assessing Rehabilitative Activities in Psychiatric Settings: An Exploratory Study Based on Grounded Theory
			Merola M., Oliva F.	Association between childhood neglect and psychiatric disorders in adults: A systematic review, meta-analysis, and meta-regression
			Antichi L.	Everyone Changes Differently: A Mixed-Method Approach to the Change of the Self in Psychotherapy adopting Time Series Analysis

11.15-13.00 Aula IV Palazzo Firenze	<i>The minds within: trauma, personality, and clinical innovation through the lens of metacognition and mentalization</i>	<b>Proponente:</b> Francesca De Salve <i>Università Cattolica del Sacro Cuore di Milano</i>	De Salve F., Oasi O.	The Certainty About Mental States Questionnaire: A Thorough Psychometric Evaluation in an Italian Sample, Unveiling Key Insights into Psychoticism and Schizotypal Characteristics
			Carcione A., Bucci I., Colle L., Nicolò G., Riccardi I., Semerari A.	Mapping the narcissistic mind: a network analysis of metacognitive and narcissistic traits
			Benzi I.M.A., Parolin L.	Trauma Profiles and Personality Functioning: A Network Analysis of Narcissistic Traits, Epistemic Trust, Mentalization, and Impairments in Self and Interpersonal Dimensions
			Rossi C., Baglio L.	VR for Hope: A Virtual Reality Protocol to Enhance Mentalization and Hope in Young Adults
11.15-13.00 Gipsoteca	<i>Antagonistic manifestations across the lifespan and different contexts</i>	<b>Proponenti:</b> Carlo Garofalo <i>Università degli Studi di Perugia</i>  Antonella Somma <i>Università Vita-Salute San Raffaele-Milano</i>	Fontana A., Pecora R., D'Offizi D., Cuzzocrea G., Santomassimo C., Panaccione I., Lo Cascio N., Petrocchi S., Brogna P., Di Cesare G.	Antagonistic Traits, Attachment and Childhood Trauma in Adolescents: Clinical and Developmental Correlates
			Somma A.	The impact of dysfunctional personality dimensions on sex fantasies and behaviors: A community study
			Garofalo C., Severi I., Aiolfi I., Howard R.	The Quadripartite Violence Typology: Factor structure and construct validity of an Italian version of the Angry Aggression Scale
			Vitolo E., Pignolo C., Giromini L., Zennaro A.	Interpersonal dynamics and aggressive behaviors: the predictive validity of the Personality Assessment

				Inventory (PAI) and the Rorschach test
11.15-13.00 Aula Magna Palazzo Manzoni	Aging between frailty and chronic illness: Psychological adaptation, change processes, and clinical methods of intervention	<p><b>Proponente:</b> Daniela Lemmo Università degli Studi di Napoli Federico II</p> <p><b>Discussant:</b> Michela Di Trani Sapienza Università di Roma</p>	Lemmo D., Cuomo A., Bianco A., Di Donato A., Illario M., Iaccarino G., Freda M.F.	Motivational Processes for Self-Care in Older Adults with Chronic Illness: Exploring Change and Resistance
			Quattropiani M.C., Sardella A.	The role of clinical psychology in implementing interventions on modifiable risk factors in dementia
			Vescovelli F., Castaldo S., Ruini C.	Psychological well-being as protective factor for motor function of patients suffering from Parkinson's disease
			Petretto D.R., Gaviano L., Carrogu G.P., Berti R., Pili R.	Frailty, Disability, and Ageing: The Narratives of the Oldest-Old and Their Role in the Study of Conceptual Models of Ageing from the Perspective of Clinical Psychology of Ageing
11.15-13.00 Sala Adunanze Palazzo Manzoni	Neuroscience in dynamic and clinical psychology: from the individual to the relationship	<p><b>Proponenti:</b> Carlo Lai Sapienza Università di Roma</p> <p>Giorgio Veneziani Sapienza Università di Roma</p> <p><b>Discussant:</b> Benedetto Farina Università Europea di Roma</p>	Cozzolino M., Liloia D., Di Prinzio F.	Mapping the Epigenetic Landscape of Psychotherapy: Evidence from fMRI Activation and Gene Regulation
			Altavilla S., Deriu V., Adornetti I., Chiera A., Ferretti F.	Narrative and social cognition: how autobiographical narratives and literary texts modulate brain response to socio-emotional stimuli
			Veneziani G., Girdali E., Lai C.	Neural synchrony in social interactions: Insights from romantic couples and deceptive dynamics

			Trentini C.	The relational mind from a neuroscience perspective: insights from the hyperscanning approach
11.15-13.00 Aula I Palazzo Manzoni	Heart rate variability as a marker of vulnerability and resilience: evidence across clinical and subclinical populations	<p><b>Proponente:</b> Cristina Ottaviani Sapienza Università di Roma; Fondazione Santa Lucia IRCCS</p> <p><b>Discussant:</b> Sergio Salvatore Università del Salento</p>	Pesca C., Ottaviani C., Carola V.	Exploring the Link Between Adverse Childhood Experiences, Depression and Cardiovascular Risk: The Role of Heart Rate Variability
			Moretta T.	Analyzing the relationship between alcohol abuse, heart rate variability, and impulsivity in young adults
			Piras C., Pesca C., Gennaro A., Nicolais G., Carola V.	Psychological Functioning and Autonomic Regulation in Coronary Artery Disease patients: Insights from a cardiac surgery unit
			Schettino M., Uzun E., Grimaldi R., Pizzagalli D.A., Ottaviani C.	The effects of transcutaneous vagus nerve stimulation on reward-based behavior in depression
11.15-13.00 Aula II Palazzo Manzoni	Psychological interventions in different medical settings – 2nd edition	<p><b>Proponenti:</b> Chiara Conti Università degli Studi "G. d'Annunzio" di Chieti-Pescara</p> <p>Piero Porcelli Università degli Studi "G. d'Annunzio" di Chieti-Pescara</p> <p><b>Discussant:</b> Lorys Castelli Università di Torino</p>	Severo M., Petrocchi S., Petito, A.	The Role of Psychological Characteristics and Personality Traits in Medication Adherence and Cardiovascular Health-Related Quality of Life – Preliminary findings
			Galli F., Cavicchioli M., Castelli L., Bottiroli S., Benfante A., Cangelosi M., Torelli A.	Promoting psychological interventions for nociplastic conditions in clinical settings: The role of traumatic experiences
			Castelnuovo G., Pietrabissa G.	Clinical and Health Psychology for Obesity in the Age of New Drug Therapies

			Zito L., Lanzara R., Conti C., Anaclerio F., Porcelli P.	The relationship between psychological distress and gut microbiota in patients with Inflammatory Bowel Disease
11.15-13.00 Aula 11 Palazzina Tartaruga	<i>Cultivating Well-Being: Therapeutic Pathways of Mindfulness-Based Approaches Across Diverse Populations</i>	<p><b>Proponente:</b> Rossella Mattea Quinto Università Europea di Roma</p> <p><b>Discussant:</b> Daniela Marchetti Università degli Studi "G. d'Annunzio" di Chieti-Pescara</p>	Scafuto F., Santoni G., Vaglini I., Girardi F., Presaghi F.	MINDhEARTH: A school-based intervention to improve personal wellbeing, mindfulness and connectedness to nature in adolescents
			Russo F., Ghiroldi S., Quinto R.M.	Effects of a Body-Based Mindfulness Program on Alexithymia and Distress Symptoms: A Pilot Clinical Trial
			Sorella S., Matiz A., Crescentini C.	Mind wandering during sustained attention task induces higher psychophysiological interference in naïve participants when compared to experienced meditators
			Pelli S., Bungaro N., Alessio F.	The relationship between mindfulness, work-related stress management, and job satisfaction in a sample of Italian correctional officers
11.15-13.00 Aula 12 Palazzina Tartaruga	<i>The Perspectives on Aging: A Multidimensional Approach to Older Adults Well-Being</i>	<p><b>Proponenti:</b> Ilaria Corbo Sapienza Università di Roma</p> <p>Giuseppe Forte Sapienza Università di Roma</p> <p><b>Discussant:</b> Alberto Sardella Università di Catania</p>	Sauta M.D., Franzoi I.G., Granieri A.	The experience of elderly cancer patients and their caregivers: a longitudinal study
			Chirico I., Trolese S., Santini S., Casanova G., Cancellieri S., Golino A., Grignoli D., Moretti V., Pronzato R., Chattat R.	The co-design of a digital platform to inform and support informal caregivers of older adults with dementia: the AGE-IT project

			Troisi G., Marotta A.	Tracing the path from OCEAN to autonomic balance: the mediating role of cognitive reserve
			Corbo I., Casagrande M.	A Multidimensional Approach to Risk Factors in Mild Cognitive Impairment
11.15-13.00 Aula 13 Palazzina Tartaruga	Mentalization, attachment and emotional regulation in contexts of psychological vulnerability	<p><b>Proponenti:</b> Rossella Procaccia <i>Università degli Studi E-CAMPUS</i></p> <p>Cristina L. Caldiroli <i>Università degli Studi E-CAMPUS</i></p> <p><b>Discussant:</b> Francesca Locati <i>Università degli Studi di Pavia</i></p>	Gagliardini G.	Attachment, Mentalization and Epistemic Trust in Young Adult Females: A Cross-Sectional Study
			Caldirolì C.L., Castiglioni M.	From Regulation to Integration: The Role of Mindfulness in Supporting Mentalization in Preschool Children
			Negri A., Barazzetti A., Milesi S.	Understanding miscarriage grief: how shame, guilt, and meaning making influence recovery
			Procaccia R.	Mentalization as a Protective Factor in Women Victims of Intimate Partner Violence
<b>SESSIONI TEMATICHE IN PARALLELO</b>				
11.15-13.00 Aula II Palazzo Florenzi	Experiences and Challenges from Childhood to Emerging Adulthood	<p><b>Chair:</b> Laura Parolin <i>Università degli Studi di Milano - Bicocca</i></p>	Molina P., Bronte M. C. T., Scuderi M.	The effect of an intervention based on the program Baby Signs Italia to the communication of children with Down syndrome
			Vecchio A., Bosio S., Dusi C., Borgatti R., Mensi M. M.	Social Isolation in Adolescence: Preliminary Data of a Delphi Study
			Rega V.	The risk of pathological social withdrawal in adolescence: The role of anti-mattering, emptiness, and maladaptive daydreaming
			Iuso S., Trotta N., Difino M. R.	Hikikomori Syndrome: A Correlational Study in Southern Italy
			Giardina A., Di Blasi M., Infanti A., Fournier L.,	Are Hikikomori and Gaming Disorder Different Conditions?

			Starcevic V., Billieux J., King D. L., Giardina A. Di Blasi M.	
			Bao Z., Landi G., Tossani E., Grandi S.	Efficacy of Psychosocial Interventions for Adolescent and Young Adult Offspring of Parents with Serious Physical or Mental Illness: A Systematic Review and Meta-Analysis
			Rospo F., Bizzi F., Charpentier Mora S.	A scoping review on risk factors in the parent-child relationship for the development of BPD in adolescence: state of art and future directions
			Favieri F., Menditto A., Forte G., Tambelli R.	Scrolling Into Dissociation: An Empirical Study on TikTok Use and Dissociative Experiences in Adolescents
11.15-13.00 Aula III Palazzo Florenzi	Attachment and Mentalization: From Assessment to Intervention	<b>Chair:</b> Chiara Pazzagli <i>Sapienza Università di Roma</i>	Zagaria, A.	The development and validation of the Adult Attachment Trauma Questionnaire (AATQ)
			Benfante, A., Koumbi, L.	Mentalization, Epigenetic Modulation, and Gut-Brain Axis Regulation in Irritable Bowel Syndrome: A Neuropsychobiological Perspective
			Pizzini B., Germani A., Dragone M., De Fortuna A. M., De Luca Picione R.	Psychological distress and mentalization deficit in problematic social media usage: a cross-sectional study
			Cipriano A.	Immature defences and psychopathology: the mediating role of mentalization
			Geraci R., Costanzo A., La Cascia C., Quattrone D., Ferraro L., Russo S., Lumetta V., Sausa B., Petralia A., Concerto C., Signorelli M. S., Muscatello M. R. A., Silvestri M. C., Turiaco F., La Barbera D.,	Risk of Problematic Gambling in the Psychiatric Population and the Role of Impulsivity, Emotional Dysregulation, and Attachment Styles

			Schimmenti A., Maniaci G.	
			Provera A., Mazza A., Gagliostro S., Provenzi L., Grumi S.	A telecare video feedback intervention to promote Mind Mindedness in mothers of children with atypical development
			Tarantino V., Papa M., Di Paolo C.	The mediating role of interoceptive awareness in the relationship between mentalized affectivity and trait anxiety in patients with temporomandibular disorders
			Messina I., Spataro P., Grecucci, A.	Interpersonal Emotion Regulation as a Mediator in the Association between Anxious Attachment and Borderline Personality Features
11.15-13.00 Aula Magna Palazzo Firenze	Developmental Challenges in Adolescents and Emerging Adults	<p><b>Chair:</b> Daniela Di Riso <i>Università degli Studi di Padova</i></p>	Anderle F., Pasqualotto A., Bentenuto A., Benso F., Venuti P.	Assessing executive attention in autistic youths: strengths, weaknesses and individual differences
			Cosi G., Fontanesi L.	Contribution to the Italian Validation of the Conflict in Adolescent Dating Relationships Inventory (CADRI)
			Ballarotto G., Marzilli E.	Is Climate Anxiety Different? Exploring the Psychological Roots of Emerging Adult Anxieties
			Ciccarelli M., Nigro G., Cosenza M., D'Olimpio F.	The role of attentional bias in chasing behavior: An experimental study in adolescent gambling
			Iannattone S., Farina A., Bottesi G.	The Relation Between Intolerance of Uncertainty and Fear of Missing Out in Adolescence: Does Boredom Play a Role?
			Raffagnato A., Negro E., Girelli M., Gatta M.,	Self-harm and psychotic experiences in adolescents admitted to a child and adolescent neuropsychiatric unit: a retrospective clinical study
			Barone B., Spicuzza V., Piombo M. A.	Is there a lack of Intimacy among Emerging Adults? A try to capture the status of Emerging Adults' interactions through

				intimacy-related variables: A Network Analysis
			Muscolino A., Cocchi A., Marten M., Vanden Abeelee M.	The Role of Parents and Peers in Shaping Adolescents' Digital Behaviors: Is there Vicarious Learning?
13.00-14.15	<b>Pausa Pranzo</b>			
13.00-14.15	<b>PROSEGUE SECONDA SESSIONE INTERATTIVA POSTER</b> Palazzo Florenzi			
<b>SIMPOSI IN PARALLELO</b>				
14.15-16.00 Aula Tesi Palazzo Florenzi	<i>Psychotherapy research: A shift from effectiveness to personalized treatments</i>	<b>Proponente:</b> Gianluca Lo Coco <i>Università degli Studi di Palermo</i>  <b>Discussant:</b> Laura Parolin <i>Università degli Studi di Milano-Bicocca</i>	Benzi I. M. A., Zarbo C.	A Transdiagnostic, Person- Centered Approach to Psychological Assessment: Profiling Symptoms, Emotion Regulation, and Epistemic Trust in Italy's Psychological Bonus Initiative
			Brugnera A., Tasca G., Tzur Bitan D., Pievani L., Poletti B., Compare A.	Latent Profiles of Trainees in Psychotherapy based on Personality Traits and their Association with Psychological Functioning
			La Tona A., Lo Coco G., Masella C., Olive M. V., Ostwald V., Carcione A., Compare A.	OutProFeed: Improving Clinical Outcomes in Psychotherapy Through Feedback Informed Therapy and Routine Outcome Monitoring
			Boldrini T., Lingiardi V.	Scientific Evidence Underlying Psychotherapy Training in Italy: A Nationwide Mapping Study
14.15-16.00 Aula IV Palazzo Florenzi	<i>Bridging psychology and medicine: Insights into acute and chronic health conditions</i>	<b>Proponente:</b> Federica Galli <i>Sapienza Università di Roma</i>  <b>Discussant:</b> Filippo Maria Nimbi <i>Università degli Studi E- CAMPUS</i>	Scalzeri M., Galli F.	Fuzzy boundaries between physical and emotional triggers in Takotsubo cardiomyopathy: a scoping review
			Cruciani G., Casali M., Tanzilli G.	The association of depressive and anxiety symptoms with defense mechanisms and mentalized affectivity in individuals with myocardial infarction

			Mariani R., Celletti C., Vizzini M. A. S., Colaboni L., Petronelli G., Pasquini M., Camerota F., Di Trani M.	Coping with a Diagnosis of Hypermobile Ehlers-Danlos Syndrome: An Analysis of Autobiographical Narratives in Relation to Affective Regulation and Chronic Pain
14.15-16.00 Gipsoteca	Psychological well-being of LGBTQIA+ youth: Exploring risks, protective factors, and barriers to mental health and healthcare access	<p><b>Proponente:</b> Micol Gemignani Università di Trento</p> <p><b>Discussant:</b> Sofia Pavanello Decaro Università degli Studi di Milano-Bicocca</p>	Santonico F., Trombetta T.	The Weight of Shame – A Psychological Mediation Model between Internalized Binegativity and Binge Eating Symptoms
			Bonato M., Cherchi B., Meneguzzo P., Scala A., Garolla A., Miscioscia M.	Impact of protective factors on risk and maladaptive eating behaviors in transgender and gender-diverse individuals
			Gemignani M., de Falco S.	Mental Health Disparities Among Italian Queer Youth: The Importance of Visibility for Emerging Identities
			Quintigliano M.	Inclusive Care or Restrictive Barriers? Health Experiences of LGBTQIA+ Individuals
14.15-16.00 Aula Magna Palazzo Manzoni	Current trends in forensic assessment: Recent findings and future perspectives	<p><b>Proponente:</b> Paolo Roma Sapienza Università di Roma</p> <p><b>Discussant:</b> Maria Cristina Verrocchio Università degli Studi "G. d'Annunzio" di Chieti-Pescara</p>	Bosco F., Mazza C.	Too Good to Be True? Introducing the Response Bias Inventory
			Pasqualini S., Tatti V., Puente-López E., Giromini L.	The Use of the Posttraumatic Stress Disorder Checklist for DSM-5 (PCL-5) in Assessing Negative Response Bias: A Quantitative Systematic Review
			Spada M. S., Aschieri F., Arcaini F., Grantalio S., Marchetti F., Panzeri P., Saccogna A., Scotti P.	Collaborative assessment in child protection: a model to foster participatory and relational assessment in patients with complex trauma in a forensic context

			Monaro M., Biondi S., Bardo C.	Forensic Detection of Malingered Mild Traumatic Brain Injury: A Multimethod Approach to Psychological Damage Assessment
14.15-16.00 Sala Adunanze Palazzo Manzoni	<i>Dialogues with the unspoken: Experiencing the implicit in the therapeutic process</i>	<b>Proponenti:</b> Ginevra Protopapa, <i>Università degli Studi di Roma Tor Vergata</i>  Bianca S. Chiabrando <i>Sapienza Università di Roma</i>  <b>Discussant:</b> Osmano Oasi  <i>Università Cattolica del Sacro Cuore di Milano</i>	Liotti M.	Navigating Epistemic Trust in the Therapeutic Relationship: Instrument Validation and Research Insights
			Sommantico M.	The role of the unspoken in the interruption of a psychoanalytic treatment
			Protopapa G., Feligioni A., Spada N.	On the talkability of death: lived experience of patients whose therapists died during treatment
			Chiabrando B.S., Giovanardi G.	The Dreaming Therapist: Use and Meaning of Countertransference Dreams in Psychotherapy. A Scoping Review
14.15-16.00 Aula I Palazzo Manzoni	<i>Innovative perspectives on psychopathology, recovery, and digital interventions in eating disorders</i>	<b>Proponente:</b> Gaia Albano <i>Università degli Studi di Palermo</i>  <b>Discussant:</b> Gianluca Castelnuovo <i>Università Cattolica del Sacro Cuore di Milano</i>	Aloi M., Rania M., Carbone E. A., de Filippis R., Quirino D., Segura Garcia C.	Disentangling food addiction in anorexia nervosa: a latent class analysis and its clinical relevance
			Tosi C., Patanè D., Natali L., Vezzosi E., Lunardi A., Albano G., Cardì V.	Post-traumatic growth in individuals recovered from an eating disorder: a qualitative study
			Albano G., Segura Garcia C., Quirino D.	A tailored guided self-help mobile app for people suffering from an eating disorder at different stages of recovery: preliminary results of the INTERconNECT-ED trial
			Bucci E., Meneguzzo P., Todisco P.	Quality of Life in Eating Disorders: The Role of Trauma

14.15-16.00 Aula II Palazzo Manzoni	Recovery through the 'collaborative approach' in mental health care. Theories and practices to clarify the 'co'(s)	<p><b>Proponente:</b> Elena Faccio <i>Università degli Studi di Padova</i></p> <p><b>Discussant:</b> Elena Vegni <i>Università degli Studi di Milano – La Statale</i></p>	Fioretti C.	Narrative and autobiographical co-construction in care relationships
			Mancini M.	A Bridge Between Worlds: Co-Writing as a Tool for Dialogue and Transformation
			Faccio E., Aquili L., Binaggia L., Sdrubolini L., Colantoni M., Rocelli M.	Does the Collaborative Approach Transform the Power Dynamics in the Therapeutic Relationship? Research and Evidence
14.15-16.00 Aula 11 Palazzina Tartaruga	Mentalization across the lifespan: exploring reflective functioning from transgenerational and transdiagnostic perspective	<p><b>Proponente:</b> Francesca Locati <i>Università degli Studi di Pavia</i></p> <p><b>Discussant:</b> Antonino Carcione <i>Università degli Studi "Guglielmo Marconi"</i></p>	Di Maro A., Esposito G.	A systematic review and meta-analysis on the relationship between mothers' and fathers' parental mentalizing and children's socioemotional functioning
			Pazzagli C., Martin R., Venturino C., Capuozzo P., Ricci G., Bandelloni L., Mazzeschi C.	Unmentalized experiences in adolescents with Somatic Symptom Disorder
			Locati F., Pizzale R., Lunghi C., Acone A., Lucà K., Broglia D.	Mentalization and epistemic trust in suicidal risk within the penitentiary context: a cross-sectional study
			Gagliardini G., Raspa V., Colli A.	Mentalizing Across Interpersonal Motivational Systems: A Comparison Between BPD and Non-PD Patients
14.15-16.00 Aula 12 Palazzina Tartaruga	The Many Faces of the Body: Interdisciplinary and Clinical Insights into Body Experiences and Dimensions	<p><b>Proponente:</b> Marta Mirabella <i>Sapienza Università di Roma</i></p> <p><b>Discussant:</b> Laura Muzi</p>	Cerea S., Mancin P., Barchi F., Manfrin E., Bisello M., Ghisi M., Moro T., Spinello G., Vellar A., Cipolletta S.	Investigating the effects of yoga on positive body image in young women: a pilot randomized controlled trial with an active control group

		Università degli Studi di Perugia	Moccia L., Serantoni C., Ambrosecchia M., De Spirito M., Gallese V., Sani G.	Interoceptive Dysfunction in Anorexia Nervosa: The Role of Childhood Trauma and Heart Rate Variability
			Di Gesto C., Grano C., Nerini A., Fornaini E., Rollero C., Caso D., Donizzetti A.R., Matera C.	The role of body appreciation in the relation between flows of compassion, breastfeeding self-efficacy, and couple satisfaction: a mediation analysis in postpartum women.
			Mirabella M., Tavoloni V., Franco A., Riboldi M., Tattini N., Trunfio O., Rugo M.A.	When the Body Speaks: Investigating the role of Body Uneasiness Dimensions in Eating Disorder Patients with Borderline Personality Disorder
14.15-16.00 Aula 13 Palazzina Tartaruga	From wars to natural disasters: New trajectories of research and intervention in the field of collective	<p><b>Proponente:</b> Francesca Tessitore Università degli Studi di Salerno</p> <p><b>Discussant:</b> Adriano Schimmenti Università degli Studi di Enna "Kore"</p>	Ostacoli L., Cotardo F.	Training on trauma treatment in Ukraine
			Regnoli G.M., De Rosa B.	"War, a Boundless Trauma": The Role of War-Worry and Future Anxiety in the Relationship Between Media Vicarious Traumatization and Anxiety in a Sample of Italian Young Adults
			Perilli E.	Urban Form, Social Networks, and Well-Being: Bridging Environmental Psychology and Spatial Justice
			Tessitore F., Tinella L.	Lights and shadows of the narrative transmission of traumatic events across generations: an exploratory study on the impact of the Irpinia earthquake on the second generation

**SESSIONI TEMATICHE IN PARALLELO**

14.15-16.00 Aula II Palazzo Firenze	Psychological Factors and Physical Health	<b>Chair:</b> Gian Mauro Manzoni <i>Università degli Studi di Pavia</i>	Zotti L., Esposito D., Di Iorio G., Covuccia M., Orecchio S., Ferrara M., Conte G.	Challenges to high-quality care in autism with functional somatic symptoms: A case-inspired narrative review and exploratory biopsychosocial model
			Leccese A., Ventriglio A., Petrocchi S., Difino M. R., Limone P.	A systematic review of psychological approaches to physical pain: focus on catastrophising and resilience
			Merlo E. M., Myles L. A. M.	Psychosomatic Features Related to Irritable Bowel Syndrome: the Role of Alexithymia on Patients' Perceived Quality of Life
			Genzano N., Santamato A.	Integrating Cognitive Training with Physical Rehabilitation: effects on memory and perceived physical well-being.
			Vallone F., Cattaneo Della Volta M. F., Stango A., Zurlo M. C.	Stress, Work-Family Interface Conflict, and Psychophysical Health Conditions Among Men and Women Employed in the Public Administration: Vicious and Virtuous Circles Within and Beyond the Work Context
			Rellini E., Turco S., Silvestri V., Guidobaldi M., Dall'Olio G., Amore F., Fortini S.	Psychological Impact of Vision Loss: psychologist's tools for assessing the mental health of patients with chronic eye diseases
			Merlo E. M., Myles L. A. M.	Alexithymia and Quality of Life: Clinical Psychological Phenomena related to Psoriasis
			Romeo A., Perutelli V., Trentini L., Tettoni M., Bonora S.	The effect of Long-Acting antiretroviral therapy in health locus of control in people living with HIV.
14.15-16.00 Aula III Palazzo Firenze	Relationships and Interpersonal Dynamics	<b>Chair:</b> Alessandra Santona <i>Università degli Studi di Milano – Bicocca</i>	Nasti C., Mottola F., Pisano S., Perreca L., Fiacco G., Catone G.	Victimization And Perpetration of Bullying/Cyberbullying and Psychopathology: A Longitudinal Study
			Florio G., Pistone L., Schettino E. M., Pedone R.	An Analysis of the Relationships Between Personality, Metacognition, Assertiveness, and Psychological Distress in Couples: An Actor-Partner Interdependence Model Approach

			Di Tella M., Veggi S., Zara G.	Emotional and cognitive functioning in offenders: a study protocol
			Taccini F., Mannarini S.	Unheard Voices: Stigma in the Lives of Women exposed to IPV in Italy
			Chiarolanza C., Carbonari A.	The role of the caregiving burden in romantic relationships
			Saladino V., Giordano F., Verrastro V.	Explorative and qualitative study on recidivism in sexual offending: Implementing sexual offense treatment programs
			Barile M., Chiarolanza C.	Maintaining a healthy intimate relationship in distressing times
14.15-16.00 Aula Magna Palazzo Firenze	Protective Factors and Well-Being across the Life Span	<p><b>Chair:</b> Federica Andrei <i>Alma Mater Studiorum Università di Bologna</i></p>	Panzeri A., Spoto A., Ghisi M.	Postpartum Depression and Psychological Health: Risk and Protective Factors in a Sample of Women During the Post-natal Period
			Sforza M., Cataldo I., Marelli S., Ferini-Strambi L., Plazzi G., Billieux J., Franceschini C.	Sleep Quality, Chronotype and Psychological Distress in Older Adults: A Latent Profile Analysis of Social Network Users
			Forte G., Casagrande M.	Heart Rate Variability and Psychological Well-being in Older Adults
			Di Dio A., Vitale N. M., Uccelli E., Verduzzo I., Lanzafame I., Triscari S.	Sport as a resource for social support and psychological well-being for people with disabilities: A systematic review
			Gori C., Belloni L., Zurkirch V., Gualtieri N., Donati M. A., Primi C.	Artificial Intelligence And Psychological Well-Being Among Healthcare Professionals: A Mediation Model To Explain The Relationships
			De Maio N., Margherita G.	Clinician Well-Being in Online Platforms and Face-to-Face Settings: A Comparative Network Analysis of Protective and Risk Factors
			Dinapoli L., Marconi E., Lafuenti L., Monti L., Savoia V., Cornacchione P., Scalise S., Colloca G. F., Tagliaferri L., Gambacorta M. A.	Workplace Well-Being in Radiotherapy: Preliminary results on the Effectiveness of Psychological Support Interventions for the Team
			Colpizzi I., Sica C., Caudek C.	State Self Compassion Dynamics: Partial Evidence for the Bipolar Continuum Hypothesis

16.00-16.30	<b>Coffee Break</b>
16.30-18.00	<b>TAVOLE ROTONDE IN PARALLELO GRUPPI DI SEZIONE CLINICA E DINAMICA</b>
16.30-18.00 Aula Tesi Palazzo Firenze	<p style="text-align: center;"><b>GRUPPO “PSICOLOGIA CLINICA E PSICOSOMATICA”</b></p> <p style="text-align: center;"><b>The implications of the biopsychosocial model in research and clinical practice</b>  <b>Proponente e Chair:</b> Silvana Grandi (<i>Alma Mater Studiorum Università di Bologna</i>)</p> <p style="text-align: center;"><b>Intervengono:</b></p> <p style="text-align: center;">Gianluca Castelnuovo (<i>Università Cattolica del Sacro Cuore di Milano</i>)  <i>Is the biopsychosocial model truly scientific and still applicable?</i></p> <p style="text-align: center;">Piero Porcelli (<i>Università degli Studi "G. d'Annunzio" di Chieti-Pescara</i>)  <i>Biological reprogramming: long-term medical consequences of early trauma</i></p> <p style="text-align: center;">Laura Sirri (<i>Alma Mater Studiorum Università di Bologna</i>)  <i>The protective role of psychological resilience in medical illness</i></p>
16.30-18.00 Aula Magna Palazzo Firenze	<p style="text-align: center;"><b>GRUPPO “PERSONALITA’ NORMALE E PATOLOGICA”</b></p> <p style="text-align: center;"><b>Nuove prospettive cliniche di ricerca in tema di diagnosi e trattamento nei Disturbi di Personalità</b>  <b>Chair:</b> Riccardo Williams (<i>Sapienza Università di Roma</i>)  <b>Co-Chair:</b> Fabio Madeddu (<i>Università degli Studi di Milano-Bicocca</i>)  <b>Discussant:</b> Emanuele Preti (<i>Università degli Studi di Milano-Bicocca</i>)</p> <p style="text-align: center;"><b>Intervengono:</b></p> <p style="text-align: center;">Chiara De Panfilis (<i>Università degli Studi di Parma</i>)  <i>Ambiti applicativi dei trattamenti psicoterapici: l'esempio della Transference-Focused Psychotherapy applicata ai servizi (“Applied” TFP)</i></p> <p style="text-align: center;">Serena Borroni (<i>Università Vita-Salute San Raffaele</i>)  <i>Una valutazione client center per una psicoterapia su misura: il Modello Alternativo dei Disturbi di Personalità come ponte per il cambiamento terapeutico</i></p> <p style="text-align: center;">Annalisa Tanzilli (<i>Sapienza Università di Roma</i>)  <i>La diagnosi psicodinamica dei disturbi di personalità in adolescenza: il ruolo delle risposte emotive del terapeuta</i></p>
16.30-18.00 Gipsoteca	<p style="text-align: center;"><b>GRUPPO “PERINATALITÀ”</b></p> <p style="text-align: center;"><b>Contemporary perspectives on models, clinical work, and research in perinatal psychology</b>  <b>Proponente e Chair:</b> Renata Tambelli (<i>Sapienza Università di Roma</i>)</p> <p style="text-align: center;"><b>Intervengono:</b></p> <p style="text-align: center;">Franco Baldoni (<i>Alma Mater Studiorum Università di Bologna</i>)  <i>Anger and aggression as markers of paternal affective disorders</i></p> <p style="text-align: center;">Francesca Favieri (<i>Sapienza Università di Roma</i>), Cristina Mazza (<i>Sapienza Università di Roma</i>),  Anna Maria Della Vedova (<i>Università degli Studi di Brescia</i>)  <i>Videofeedback technique in a brief psychodynamic intervention</i></p>

	<p>Alessandra Babore, Carmen Trumello, Lucia Lombardi (<i>Università degli Studi "G. d'Annunzio" di Chieti-Pescara</i>)  <i>Parental representations in preterm birth</i></p> <p>Maria Rita Infurna (<i>Università degli Studi di Palermo</i>)  <i>Screening models in institutional contexts</i></p>
<p>16.30-18.00  Aula Magna  Palazzo  Manzoni</p>	<p style="text-align: center;"><b>GRUPPO “PSICOLOGIA CLINICA DELL’INVECCHIAMENTO”</b></p> <p style="text-align: center;"><b>Le nuove frontiere della psicologia clinica dell'invecchiamento</b>  <b>Proponente e Chair:</b> Rabih Chattat (<i>Alma Mater Studiorum Università di Bologna</i>)  <b>Discussant:</b> Maria Casagrande (<i>Sapienza Università di Roma</i>)</p> <p style="text-align: center;"><b>Intervengono:</b></p> <p style="text-align: center;">Alberto Sardella (<i>Università di Catania</i>)  <i>Social frailty and its psychological determinants in older adults: which insights?</i></p> <p style="text-align: center;">Sonia Montemurro (<i>Università degli Studi di Padova</i>)  <i>Loneliness and Psychological Well-Being in the Elderly: Impact on Self-Perceived Cognitive Efficiency</i></p> <p style="text-align: center;">Barbara Blasutto (<i>Sapienza Università di Roma</i>)  <i>From Behavioral Changes to Cognitive Decline: The Emerging Role of Mild Behavioral Impairment</i></p> <p style="text-align: center;">Rossella Messina (<i>Alma Mater Studiorum Università di Bologna</i>)  <i>PROMs and aging: the role of clinical psychology in the management of type 2 diabetes</i></p> <p style="text-align: center;">Ilaria Chirico (<i>Alma Mater Studiorum Università di Bologna</i>)  <i>The co-design and implementation process of digital tools to inform and support informal caregivers</i></p>
<p>16.30-18.00  Sala delle  Adunanze  Palazzo  Manzoni</p>	<p style="text-align: center;"><b>GRUPPO “MENTALIZZAZIONE E FIDUCIA EPISTEMICA: teoria, clinica e ricerca”</b></p> <p style="text-align: center;"><b>Sto pensando a come mi pensi: la funzione riflessiva in psicoterapia e nella genitorialità</b>  <b>Proponente e Chair:</b> Antonello Colli (<i>Università degli Studi di Urbino Carlo Bo</i>)  <b>Discussants:</b> Vittorio Lingiardi (<i>Sapienza Università di Roma</i>)</p> <p style="text-align: center;"><b>Intervengono:</b></p> <p style="text-align: center;">Francesca Locati (<i>Università degli Studi di Pavia</i>)</p> <p style="text-align: center;">Giovanna Esposito (<i>Università degli Studi di Napoli Federico II</i>)</p> <p style="text-align: center;">Nicola Carone (<i>Università degli Studi di Roma Tor Vergata</i>)</p>
<p>16.30-18.00  Aula II  Palazzo  Manzoni</p>	<p style="text-align: center;"><b>GRUPPO “ASSESSMENT” AIP</b></p> <p style="text-align: center;"><b>LO SPAZIO DELL’ASSESSMENT NELLA FORMAZIONE UNIVERSITARIA E PROFESSIONALE: RIFLESSIONI E PROSPETTIVE</b></p> <p style="text-align: center;"><b>Proponente e Chair:</b> Adriana Lis (<i>Università degli Studi di Padova</i>)  <b>Discussant:</b> Alessandro Zennaro (<i>Università di Torino</i>)</p>

	<p style="text-align: center;"><b>Intervengono:</b></p> <p style="text-align: center;">Filippo Aschieri (<i>Università Cattolica del Sacro Cuore di Milano</i>)</p> <p style="text-align: center;">Elisa Delvecchio (<i>Università degli Studi di Perugia</i>)</p> <p style="text-align: center;">Laura Parolin (<i>Università degli Studi di Milano-Bicocca</i>)</p> <p style="text-align: center;">Claudia Pignolo (<i>Università di Torino</i>)</p>
18.30-19.30	<b>Piccolo Evento Musicale</b> Auditorium Santa Cecilia

**Sabato 20 settembre**

**SIMPOSI IN PARALLELO**

<p>9.00-10.45 Aula Tesi Palazzo Firenze</p>	<p><i>Bodies, Identities, and Health Processes in LGBTQIA+ Lives</i></p>	<p><b>Proponenti:</b> Cristiano Scandurra <i>Università degli Studi di Napoli Federico II</i></p> <p>Gianluca Cruciani <i>Università degli Studi di Roma Tor Vergata</i></p> <p><b>Discussant:</b> Luca Rollè <i>Università di Torino</i></p>	<p>Mezzalana S., Martino M.L., Bochicchio V., Singer J., Carone N., Scandurra C.</p>	<p>The Body at Stake in LGBTQIA+ Individuals' Self-Defining Memories</p>
			<p>Di Giannantonio B., de Graaf N., Scalise M.</p>	<p>Bodies, Social Gaze, and Gender Norms: Validating the Body and Social Gender Dysphoria Scale</p>
			<p>Lorusso M., Tubertini E., Bittoni C., Gaboardi M., Lasagna C., Minerva L., Malmquist A., Wurm M., Lenzi M.</p>	<p>Embracing Minority Joy: Positive Experiences of Trans and Nonbinary Identities</p>
			<p>Bonato M., Olivier S., Meneguzzo P., Scala A., Garolla A., Selvaggi G., Miscioscia M.</p>	<p>Reimagining parenthood: uterine transplantation, clinical trajectories, and the biopolitics of reproductive desire in transgender women</p>
<p>9.00-10.45 Aula IV Palazzo Firenze</p>	<p><i>Neurobiological, psychophysiological and neuropsychological correlates of common mental health and neurodegenerative conditions: How can applied research inform clinical psychology practice?</i></p>	<p><b>Proponente:</b> Marco Cavallo <i>Università degli Studi E-CAMPUS</i></p> <p><b>Discussant:</b> Francesco Oliva <i>Università di Torino</i></p>	<p>Imperatori C., De Rossi E., Farina B.</p>	<p>Understanding psychopathology from the Triple Network perspective: a review of the literature</p>
			<p>Dell'Acqua C., Mastromatteo L.Y., Scrimin S., Palomba D., Messerotti Benvenuti S.</p>	<p>Affective processing in preadolescents with a familial risk for depression: insights from ERPs</p>
			<p>Antonucci L.A., Raio A., Kikidis G.C., Bertolino A., Rampino A., Pergola G.</p>	<p>Personality changes during adolescence mediate the relationship between genetic risk for schizophrenia and bullying victimization in the prediction of adult psychotic-like experiences</p>
			<p>Cavallo M., Cecchetti S.</p>	<p>"High-tech" cognitive assessment and intervention in neurocognitive disorders: Acceptable, feasible, effective?</p>

9.00-10.45 Gipsoteca	The "Second Gender". Mental health challenges among contemporary female adolescents and young women	<b>Proponente:</b> Guido Giovanardi Sapienza Università di Roma  <b>Discussant:</b> Alessandra Santona Università degli Studi di Milano-Bicocca	Milanesi K., Corona L.	Identity, Sexism, and Cultural Violence: A Quantitative Study on Mental Health Risk in Female Adolescents and Young Adults
			Melcarne F., Frugoni A., Gianturco C.	Becoming a Woman: Subjective Experiences and Meanings of Female Identity in Adolescence
			Tavoloni V.	Eating Symptomatology and Body Image Disturbances in Assigned Female Adolescents and Emerging Adults: A Comparative Study
			Boursier V., Gioia F.	Shame and the "narcissistic solution" in young women: reflections starting from two studies
9.00-10.45 Aula Magna Palazzo Manzoni	Psychophysical well-being of university students: analysis of requests for support and effectiveness of interventions	<b>Proponente:</b> Salvatore Gullo Università degli Studi di Palermo  <b>Discussant:</b> Cecilia Serena Pace Università degli Studi di Genova	Craig F., Colella G., Costabile A.	Psychological Counseling as a pathway from distress to well-being in university students
			Gullo S., Teti A., Inguglia C., Ferraro L., Marchica L., La Cascia C.	First data on student's distress and effectiveness of academic psychological support interventions
			Gelo O., Mazzeo O., Venuleo C.	Psychological counselling at the University of Salento: Preliminary findings
			Colli A., Cipollone E.	What works, for whom, and how much is needed in the context of psychological university services
9.00-10.45 Sala Adunanze Palazzo Manzoni	Pathological narcissism, malignancy and aggressiveness in interpersonal relationship	<b>Proponenti:</b> Serena Borroni Università Vita-Salute San Raffaele	Borroni S.	The Relationship Between Malignant Narcissism and Intimate Partner Violence: a Study on Community-Dwelling Participants

		<p><b>Discussant:</b> Rossella Di Piero <i>Università degli Studi di Milano-Bicocca</i></p>	Saladino V., Calaresi D., Verrastro V.	Doctor my wife beats me: A relationship based on violence, narcissism, and addiction
			Oppici L., Roma P.	Narcissism and Interpersonal Sadism: An Examination of Positive Response Bias and the Mediating Role of Empathy
			Geminiani C., Gialdi G., Grazioli V.	The Mediating Role of Malignant Narcissism in the Relationship Between Moral Disengagement and Bullying Behavior in Adolescence
<p>9.00-10.45 Aula I Palazzo Manzoni</p>	<p><i>Problematic sexuality across 42 countries: findings from the International Sex Survey</i></p>	<p><b>Proponente:</b> Giacomo Ciocca <i>Sapienza Università di Roma</i></p> <p><b>Discussant:</b> Ornella Corazza <i>Università di Trento</i></p>	Jannini T.B., Giannini T., Demetrovics Z., Kraus S., Potenza M.N., Koós M., Nagy L., International Sex Survey Consortium, Bóthe B.	Exploring the Interplay of Attention-Deficit/Hyperactivity Disorder (ADHD) with Compulsive Sexual Behaviors: An Undirected and Bayesian Network Analysis across multiple sociodemographic characteristics
			Ciocca G.	An overview of the cross-cultural studies of the International Sex Survey Network
			De Luca I., Demetrovics Z., Kraus S., Potenza M.N., Koós M., Nagy L., International Sex Survey Consortium, Bóthe B.	Depression and Anxiety Symptoms' Associations with Problematic Pornography Use (PPU) Across Genders
			Giannini T.	Compulsive sexual behavior disorder and paraphilic disorders: Findings from the International Sex Survey
<p>9.00-10.45 Aula II Palazzo Manzoni</p>	<p><i>Exploring couple dynamics and relationship characteristics in contemporary clinical settings</i></p>	<p><b>Proponenti:</b> Marialuisa Gennari <i>Università Cattolica del Sacro Cuore di Brescia</i></p>	<p>Frisina S., Muça J., Rogier G.</p>	<p>Cohabiting or not cohabiting? Counterintuitive relationships between relationship status and mental, interpersonal and emotional health</p>

		Giancarlo Tamanza <i>Università Cattolica del Sacro Cuore di Brescia</i>	Mazzoni S., Porcedda, L.	Why do couples require couples therapy?
		<b>Discussant:</b> Sara Molgora <i>Università Cattolica del Sacro Cuore di Milano</i>	Gennari M.L., Amoroso A., Bossoni A., Tamanza G.	Beyond the decision: How relationship quality and family background shape the meaning of Assisted Reproductive Technology
			Fusco C., Fusoni F., Pierazzuoli F., Santona A.	Parenthood through assisted reproduction: the role of parents' interpersonal functioning on disclosure to children
9.00-10.45 Aula III Palazzo Manzoni	<i>The Progress of Sexual Health in Clinical Psychology: New Scientific Perspectives</i>	<b>Proponente:</b> Filippo Maria Nimbi <i>Università degli Studi E-CAMPUS</i>  <b>Discussant:</b> Lilybeth Fontanesi <i>Università degli Studi "G. d'Annunzio" di Chieti-Pescara</i>	Nimbi F.M.	Analyzing attitudes towards sexuality and their role in health-care practice - Validation of the Sex-Positive Attitudes Scale (SPAS)
			Pavanello Decaro S., Giacomozzi M.	Experiences and aspiration regarding sexuality education of individuals with multi-minority identities
			Mollaioli D., Sansone A., Ciocca G., Jannini E.A.	Exploring the Role of Parental Care and Overprotection in Predicting Erectile Dysfunction: A Machine Learning Approach
			Battaglia B., Melcarne F., Macicone M., Villani G., Marra C., Saettini F.	Understanding Vulvodynia: Intersecting Psychology, Pain, and Identity
9.00-10.45 Aula 11 Palazzina Tartaruga	<i>Personality Functioning, Traits, and Interpersonal Dynamics: A Contemporary Understanding of Personality Pathology and its Therapeutic Implications</i>	<b>Proponente:</b> Emanuele Preti <i>Università degli Studi di Milano-Bicocca</i>	Guarino D., Lingiardi V., Frugoni A., Tanzilli A.	The evidence around the Shedler-Westen Assessment Procedure in adolescence: A systematic review of assessment, changes over time and associations with clinical outcomes

		<p><b>Discussant:</b> Gianluca Lo Coco <i>Università degli Studi di Palermo</i></p>	Boscaro L., Fossati A.	Psychotherapy effectiveness through the lenses of DSM-5 Alternative Model of Personality disorders
			Fanti E., Di Sarno M., Di Pierro R., Preti E.	Beyond the Mask: Toward a Personalized Understanding of Paranoid Subtypes and their Narcissistic Expressions in the General Population
			Di Sarno M., Madeddu F., Di Pierro R.	Sampling patients' interpersonal perceptions and affects in psychotherapy: An update
<p>9.00-10.45 Aula 12 Palazzina Tartaruga</p>	<p><i>Mapping the Dynamics of Interpersonal Synchrony: A Multidisciplinary Look at Brain, Behavior, and Clinical Intervention</i></p>	<p><b>Proponente:</b> Pietro De Carli <i>Università degli Studi di Milano-Bicocca</i></p> <p><b>Discussant:</b> Chiara De Panfilis <i>Università degli studi di Parma</i></p>	Bertamini G., Perzoli S., Bentenuto A., Furlanello C., Chetouani M., Cohen D., Venuti P.	Early child-clinician acoustic synchrony patterns predict autism intervention outcome: an AI-based automated analysis using dynamic systems theory and affective computing
			Cavallaro R., Carollo A., Bizzego A., Schäfer V., Pletti C., Hoehl S., Esposito G.	Interpersonal Neural Synchrony in Real-Life Social Interaction: Investigating the Effect of Interpersonal Closeness and Social Interactivity
			Cimmino Picone V., Kleinbub J.R., Ruffin D., Ferraris A., Lorenzoni A., Capuani V., Caruso V., Palmieri A.	Capturing Physiological Arousal and Synchronization During Clinical Phenomena: An In-Depth Analysis of a Single-Case Study
			Gregorini C., De Carli P., Petilli M., Medoni M., Zamm A., Preti E., Konvalinka I.	Neural mechanisms underlying interpersonal coordination: the role of borderline traits on alpha desynchronization
<p>9.00-10.45 Aula 13 Palazzina Tartaruga</p>			Fazio L., Pergola G., the IMAGEN consortium	Ruminative thinking mediates the effects of exposure to adverse life events on the presence and persistence of psychotic-like experiences

	<p><i>From roots to response: Why leveraging on behavioral correlates of psychopathology development from early signs to care</i></p>	<p><b>Proponente:</b> Alessandra Raio <i>Università degli Studi di Bari Aldo Moro</i></p>	<p>Raio A., Wenzel J., Kambeitz-Illankovic L., Kambeitz J.</p>	<p>Adolescent personality subtypes link gene-environmental interplay with subclinical psychosis and depression in adulthood</p>
		<p><b>Discussant:</b> Alessandro Gennaro <i>Università Telematica Pegaso</i></p>	<p>Rossi R.</p>	<p>Pathways from Early Trauma to Addictive Behaviors in Adolescence: The Role of Psychopathology, Attachment, and Resilience</p>
			<p>Göksal R., Albini C., Altuncu K., Masiero G., Ovadias P., Spada N., Troiani C., Yenihayat A.</p>	<p>Exploring Therapists' Emotional Responses with Individuals Diagnosed with Antisocial Personality Disorder: A Scoping Review</p>

**SESSIONI TEMATICHE IN PARALLELO**

<p>9.00-10.45 Aula II Palazzo Firenze</p>	<p>Psychological Well-Being and Distress Among University Students</p>	<p><b>Chair:</b> Maria Francesca Freda <i>Università degli Studi di Napoli "Federico II"</i></p>	<p>Ballarotto G., Marzilli E., Fiorini Bincoletto A.</p>	<p>Hidden Selves and Harmful Patterns: How Silencing Impacts Female University Student Empowerment</p>
			<p>Castaldo S., Vescovelli F., Li Pira G., Ruini C.</p>	<p>Profiles of psychological well-being and vulnerabilities in Italian university students. Findings from the Prin Digiwell Project</p>
			<p>Sciabica G. M., Fortunato A., Morelli M., Chirumbolo A., Andreassi S.</p>	<p>Time well spent: The long-term effects of psychodynamic counseling intervention on university students' present and future time attitudes</p>
			<p>Albergo D., Mattei M., Bastianoni P., Traverso L.</p>	<p>Psychological Well-being and Academic Satisfaction in University Students</p>
			<p>Varallo G., Reho M., Scarano A., Camia M., Ferrari E., Vezzali L., Scorza M.</p>	<p>Chronotype, insomnia, and psychological distress as predictors of academic burnout in university students: a cross-sectional study</p>
			<p>Rossi T., Spataro P., Bonaiuto F., Granieri G., Cardinali P., Petrucelli I., Maniglio R., Loconsole C.</p>	<p>Effectiveness of a Transactional Analysis-Based Group Intervention for Academic Burnout in University Students</p>
			<p>Biolcati R., Ambrosini F., Özal Z., Mancini G., Grandi S.</p>	<p>Who Benefits from Analytic Psychodrama? Psychological Characteristics Associated with Significant Improvement in Young Adults Attending a University Psychological Support Service</p>

			Mottola F., Perreca L., Catone G., Fiacco G.	"Speak Clearly, Live Better": A Psychoeducational Intervention within the PROBEN Project
9.00-10.45 Aula III Palazzo Firenze	Empirical and Clinical Trends in Body Image, Eating Behaviors, and Obesity	<b>Chair:</b> Giulia Gagliardini <i>Università Mercatorum</i>	Abdoli M., Santonicola R., Nayak O., Fadia A., Rairikar M., De Sousa A., Cotrufo P.	Understanding the Connection Between Body Image and Self-Esteem Among Indian and Italian Students
			Raspa V., Pampanelli S., Dalla Ragione L., Menculini G., Moretti P., Tortorella A.	Obesity and residential treatment analysis of clinical changes and predictive factors
			Severo, M., Calvio, A., Silvestre, R.	Perfectionism, Symptoms of Body Dysmorphia, and Obsessive-Compulsive Symptoms as Risk Factors for Eating Disorders – Preliminary findings
			Scotto Rosato M., Cella S.	Emotion Regulation and Obesity Prevention: Insights from the ERA Trial
			Rossi A. A., Mannarini S.	Linking Emotional Maltreatment in Childhood to Overeating: The Mediating Roles of Reflective Functioning and Food Addiction
			Semola M., Franchina V.	Inside the Perspective of Peer Mentors: Developing a collaborative virtual network approach to eating disorder self-management
			Rossi A. A.	From Emotion Dysregulation and Mentalization to Emotional Eating and Overeating: The Role of Food Addiction
			Paluan E., Marogna C.	From hysteria to anorexia: An archival and thematic analysis of female patients' records in an Italian asylum (1907-1951)
9.00-10.45 Aula Magna Palazzo Firenze	AI and Digital Technologies in Clinical Research and Practice	<b>Chair:</b> Angelo Compare <i>Università degli Studi di Bergamo</i>	Facchino A. P., Verrocchio M. C.	Teaching Rorschach Administration Through an Avatar-Based Serious Game: a Preliminary Evaluation
			Cavarretta M. V., Pellerin H., Ingoglia S., Truck I., Anzalone S. M., Cohen D.	Little Robot, Would You Like to Be My Friend?
			Andrisano Ruggieri R., Ragosta A.	AI, Chatbot and Psychotherapy
			Gardini V., Tomba E.	The role of digital technologies in promoting healthy and sustainable

			eating: a systematic review of the literature
			Artificial Intelligence and Psychotherapy: Psychoanalytic Reflections from Silicon Valley to Italy
		Carbone A., Essig T.	Motives Behind the Method: A Qualitative Analysis of Narratives from Self-Harm e-Communities on Reddit
		Sukhija V. J., Osti C., Salcuni S.	reACT♀: A Serious Game to Help Female STEM Students Manage Stress
		Fietta V., Nabavi S. S., Gabrielli S., Navarin N., Monaro M.	“Wave Island”: A Serious Game for Emotion Regulation through Pubertal Changes
		Stabile M., Carraturo, F., Cantone D., Cella S.	
10.45-11.15	<b>Coffee Break</b> Palazzo Florenzi		
10.45-11.15	<b>TERZA SESSIONE POSTER INTERATTIVA</b> *candidati al premio Miglior Poster Palazzo Florenzi		
	Volpi F.	Helicopter Parenting and Personality Functioning in Love Addiction: A Person-Centered SEM Study in Emerging Adults *	
	Gotti G., Crippa F., Danyal K., Magliocca S., Zeppegno P., Gramaglia C., Madeddu F., Iqbal N.,	Cross-cultural Comparison of Suicidal Ideation in Indian and Italian University Students	
	Scotto Rosato M., Stabile M.	ERA: co-designing an emotion regulation app for childhood obesity prevention *	
	Corbo I.	The Impact of Sleep Quality on Executive Functioning in Aging *	
	Morale C., Cellucci F., Sbardella A., Piras C.	Traumatic experiences and Dermatological diseases: a Systematic Review *	
	Almerico L., Matascioli N., Manna E., Vicinanza A., Marcone R., Senese V.P.	Relational memories with educational figures: validation of the italian version of the teacher acceptance-rejection questionnaire (TARQ)	
	Di Vincenzo G., Sbardella A.	Psychological correlates of functional somatic symptoms: development of an intervention protocol for pediatric clinical settings *	
	Fanti E., Carraro E.	Beyond the Label: Profiling Borderline Personality Traits and Their Emotional Dysregulation Signatures *	
	Poli M., Courtet P., Calati R.	From Warning Signs to Suicidal Crisis: A Scoping Review of Imminent Suicide Risk Indicators	
	Calmi G., Zanini L.	Patient-Therapist Physiological Synchrony: Preliminary findings from a pilot study *	
	Özal Z., Ambrosini F., Biolcati R, Mancini G.	State of the Art in Interventions Assessing Trait Emotional Intelligence	
	Malerba A., Lauriola M., Marini M., Parrisè C., Prislei L., Livi S., Eid M.	Validating a State Measure of Intolerance of Uncertainty in Adolescents: a Longitudinal S-1 Bifactor Approach	
	Matascioli N., Sautto L., Brancia A., Pezzella A.	Perceived parental rejection and bullying victimization in school and virtual contexts among Italian adolescents *	
	Chiabrandò B.S.	Transition dreams: A preliminary study of dreams during the gender affirming pathway *	
	Pezzella A., Buono P., Marani N., Almerico L., Carta A., Nobile M., Iuliano R., Bravaccio C., Pisano S.	Cyclothymic-Hypersensitive Temperament and Associations with Psychopathology Over Time in Early Adolescence	
	Göksal R., De Vettor M., Lo Buglio G.	The Efficacy of Mindfulness-Based Programs: An Umbrella Review of Meta-Analyses of Randomized Controlled Trials *	
	Semola M., Franchina V.	Do Adolescents' Appearance Comparison and Body Satisfaction Change with Exposure to Social Media Images? An Ecological Momentary Assessment Study *	
	Sottile J., Guarneri C., Mineo R.	Perinatal Loss and Assisted Reproductive Technologies: Prenatal Attachment Across Trimesters	
Cecchi V., Campedelli V.	Psychological assessment of patients undergoing bariatric surgery: a proposed protocol in the hospital setting *		

Caldirolì C.L., Larghi S., Lapomarda L., Datteri E.	Exploring Emotional Engagement and False Belief Attribution in Children with Autism Spectrum Disorder Through Interaction with a Non-Humanoid Robot
Nembrini G.	Parasympathetic Activity as a Predictor of Problematic Social Media Use in Italian Mid-Adolescents: Findings from the SMART Project *
Aiello R., Pepi A., Tinervia G.	Psychological Determinants of Health-Protective Behaviors and Vaccination Willingness During Epidemic Outbreaks: Insights from the BEHAVE-MOD Project *
Bisonti G., Marini C., Golfieri L.	Psychological Care in Vascular Surgery: A Descriptive Clinical Experience in an Acute Hospital Setting *
Cuzzocrea G., Natalizi F., Moretti G.	Toward an Integrated Understanding of Sustainable Behavior: The Role of Psychological and Cultural Dimensions *
Bianco R., Pizzo R.	Thriving or Struggling? Basic Psychological Needs' Profiles and Their Links to Performance and Well-Being in STEM Education *
Severi I., De Ciechi A., Pagano L.P.	The Functions of Aggression Questionnaire: preliminary study on the Italian validation
Cosenza A., Natalizi F., Gruppo Me.Mo Unipg	Mentalization as a pathway between psychological need satisfaction and well-being in university students: findings from the Me.Mo (Mente in Movimento) project *
Aiolfi I., Bruno G.	Psychological vulnerability after trauma: Identifying person-centered profiles of risk and resilience
Gizzi G., Ghizzoni G., Gruppo Smart	The Impact Of Self-Esteem On Adolescents' Problematic Social Media Use: The Mediating Role Of Emotion Dysregulation *
Mastinu L.	The role of personality traits in dynamic driving simulator sessions

**SIMPOSI IN PARALLELO**

<p>11.15-13.00 Aula Tesi Palazzo Firenze</p>	<p><i>Emotional Health in Contemporary Parenthood: Insights into the Challenges Faced by Mothers and Fathers</i></p>	<p><b>Proponente:</b> Federica Andrei <i>Alma Mater Studiorum Università di Bologna</i></p> <p><b>Discussant:</b> Alessandra Santona <i>Università degli Studi di Milano-Bicocca</i></p>	<p>Andrei F., Epifanio M.S., Cimino, S., La Grutta S., Riolo M., Popovic M., Trombini E.</p>	<p>Understanding Parental Burnout: Preliminary Findings from a Multiregional Longitudinal Study in Italy</p>
			<p>Andrei F., Tambelli R., Della Casa V., Trombini E., Popovic M., Cimino S.</p>	<p>Parents with persistent depressive disorder (dysthymia) with anxious distress: an empirical contribution on coparenting characteristics in a sample with children at the onset of puberty</p>
			<p>Piombo M.A., La Grutta S., Epifanio M.S., Di Napoli G., Novara C.</p>	<p>Parenting Style, Perceived Emotional Intelligence of Adolescents, and Digital Engagement: A Comparative Study Between Adoptive and Non-Adoptive Parents</p>
			<p>Tracchegiani J.</p>	<p>When parenting feels overwhelming: The role of caregiving helplessness in burned-out mothers victimized by intimate partner violence</p>

<p>11.15-13.00 Aula Magna Palazzo Firenze</p>	<p><i>A New Horizon for Clinical Practice: Steps Towards A Dimensional Approach to Psychopathology</i></p>	<p><b>Proponenti:</b> Agata Andò <i>Università di Torino</i></p> <p>Andrea Fossati <i>Università Vita- Salute San Raffaele</i></p> <p><b>Discussant:</b> Arianna Palmieri <i>Università degli Studi di Padova</i></p>	<p>Andò A., Brienza L., Zennaro A.</p>	<p>A Dimensional and Data-driven Perspective on Perseverative Thinking Expressions</p>
			<p>Sideli L., Mascanzoni M., Demofonti G., Sorice S.</p>	<p>The psychotic continuum and its association with environmental risk factors</p>
			<p>Brienza L., Mastinu L., Andò A., Di Girolamo M.</p>	<p>Bridging the Gaps between HiTOP and Clinical Practice: Introducing the ESI and the HiTOP-SR in the Italian context</p>
			<p>Fossati A.</p>	<p>Hoarding, collecting and obsessive- compulsive spectrum disorders: A dimensional perspective</p>
<p>11.15-13.00 Aula IV Palazzo Firenze</p>	<p><i>Implicit Emotion Regulation in Clinical and Health Psychology: The Key Role of Defense Mechanisms</i></p>	<p><b>Proponente:</b> Mariagrazia Di Giuseppe <i>Università degli Studi di Roma Tor Vergata</i></p> <p><b>Discussant:</b> Fabio Madeddu <i>Università degli Studi di Milano- Bicocca</i></p>	<p>Fiorini Bincoletto A., Dentale F.</p>	<p>How We (Do Not) Trust: Defensive Profiles of Epistemic Trust and its Disruptions</p>
			<p>Franchini C.</p>	<p>Defense Mechanisms and Epistemic Trust: pathways to Dyadic Adjustment</p>
			<p>Silvestro O., Spatola C.A.M., Schwarz P., Martino G.</p>	<p>Defensive Functioning in Chronic Allergic Diseases: focus on Severe Allergic Asthma and Hymenoptera Venom Anaphylaxis</p>
			<p>Juli M.R.</p>	<p>Psychological distress and defense mechanisms in Feeding and Eating Disorders</p>

11.15-13.00 Gipsoteca	[SIMPOSIO E-CARE]  <i>Psychological well-being, inclusion, and adaptation: Multidisciplinary perspectives on health, identity, and challenges in academia</i>	<b>Proponente:</b> Alessandra Provera <i>Alma Mater Studiorum Università di Bologna</i>  <b>Discussant:</b> Giovanna Esposito <i>Università degli Studi di Napoli Federico II</i>	Fasola G., Bordianu E., Cavazzoni F.	Academic (Un)Belonging: Investigating the Emotional Burden of Discrimination in Italian Academia
			Gattoni M.F.	Subclinical eating behaviours in Celiac Disease: a Scoping Review
			Mancinelli E.	Reducing Risk and Enhancing Psychological Adjustment among Pre-adolescents: Evaluation of School-based Focus Groups from the LOOK@ME Project
			Pistorio M.L.	The interplay between parental bonding and health-related quality of life in kidney transplant recipients
11.15-13.00 Aula Magna Palazzo Manzoni	[SIMPOSIO E-CARE]  <i>Attachment and Mentalization: Methodological Advances and Clinical Implications in Different Contexts</i>	<b>Proponente:</b> Tommaso Trombetta <i>Università di Torino</i>  <b>Discussant:</b> Agostino Brugnera <i>Università degli Studi di Bergamo</i>	Filosa M., Santoro G.	A New Tool for Assessing Earned Secure Attachment: Development and Validation of the Earned Secure Attachment Questionnaire
			Passeggia R.	The mediating role of academic engagement in the relationship between reflective functioning, psychological distress and intention to dropout during COVID-19 pandemic

			<p>Quinto R.M., Bonifati C., Graceffa D.</p>	<p>The Impact of Attachment Style on Psychological Distress and Somatization in Psoriasis and Vitiligo Patients: The Role of Social Support and Cognitive Reappraisal</p>
			<p>Tironi M., Berlin E., Coppola I.</p>	<p>The Words of Dating Relationships: Autobiographical Narratives of Adolescents Through the Lens of Attachment and Mentalization</p>
<p>11.15-13.00 Sala Adunanze Palazzo Manzoni</p>	<p><i>Unlocking New Frontiers In and Towards Emerging Adulthood: Navigating Contextual Challenges and Age-specific Insights</i></p>	<p><b>Proponenti:</b> Daniela Di Riso <i>Università degli Studi di Padova</i></p> <p>Marina Miscioscia <i>Università degli Studi di Padova</i></p> <p><b>Discussant:</b> Claudia Mazzeschi <i>Università degli Studi di Perugia</i></p>	<p>Spaggiari S., Bruno G., Bottesi G., Di Riso D.</p>	<p>Unraveling the Threads: Examining Intolerance of Uncertainty and Emotion Dysregulation as Mediators in the Relation Between Insecure Attachment Styles and Separation Anxiety in Emerging Adulthood</p>
			<p>Scandurra C., Pizzo R., Freda M.F.</p>	<p>Capturing the struggles of emerging adulthood in the university context: Development and validation of the Academic Psychological Distress Scale</p>
			<p>Raffagnato A., Borrello M.</p>	<p>Academic Anxiety and suicide risk: an exploratory analysis on mental health among Italian university students</p>

			Ferro L., Centonze E., Di Maria G., Cristofanelli S.	Adolescent Prevention Program to Reduce Psychological Distress and Suicide Risk in Emerging Adulthood
11.15-13.00 Aula II Palazzo Manzoni	New frontiers of assessment: Tools and perspectives in psychopathology	<b>Proponenti:</b> Patrizia Velotti Sapienza Università di Roma  Guyonne Rogier Università Unicamillus  <b>Discussant:</b> Laura Parolin Università degli Studi di Milano- Bicocca	Bruno S., Velotti P.	Rethinking Suicidal Ideation: Mental states related to Suicidal Ideation Scale (MESIS)
			Somma A.	The Schedule for Nonadaptive and Adaptive Personality-2 (SNAP-2): A bridge between the past, the present... and the future
			Loscalzo Y., Rogier G.	Development and Initial Validation of The Experiences of Trading Questionnaire
			Abate R.	Understanding Eco-psychopathologies: Coding the Eco Psychopathologies Interview (EPI) Using a Psychodynamically Informed System
11.15-13.00 Aula III Palazzo Manzoni	When a Parent is Born: A Screening and Intervention Model for the Prevention of Psychosocial Risk Factors During Pregnancy	<b>Proponenti:</b> Maria Rita Infurna Università degli Studi di Palermo  Linda A. Antonucci Università degli Studi di Bari Aldo Moro  <b>Discussant:</b> Renata Tambelli	Mento C., Imbesi M., Bartolotta C., Arena F., Esposito G., Formica I.	Best practice in prevention and treatment of PPD in the couple
			Lagetto G., Giusino D., Leo R., Gelo O.C.G.	Parents in the making: A computerized qualitative content analysis of mothers' perinatal narratives
			Bevacqua E., Fazio L., Rini C., Falgares G., Costanzo G., Giannone F., Infurna M.R.	Paternal Antenatal Attachment: The Role of Childhood Maltreatment and Depressive Symptoms During Pregnancy

		Sapienza Università di Roma		
			Antonucci L.A., Rollo S., Fanizza A., Franciosa G., Dispoto E., Asselti M.G., Pennacchio T.C., Mento C.	Psychological determinants of perinatal depressive symptoms and the role of reflective function: a machine learning study
11.15-13.00 Aula 11 Palazzina Tartaruga	Cultural Differences in Clinical, Social and Health Services	<b>Proponenti:</b> Sara Mondini Università degli Studi di Padova  Antonio Iudici Università degli Studi di Padova  <b>Discussant:</b> Stefano Mariano Carta Università degli Studi di Cagliari	Polito A., Costabile A., Craig F., Servidio R.	The Impact of Post- migration Living Difficulties on Young Migrants' Mental Health
			Gennari M., Accordini M.	Clinical Competencies for Working with Migrants in Social Services
			Muzi S., Gualco C., Di Maria E., Miano A., Pace C.S.	Barriers in Accessing Mental Health Services: Perspectives of Migrant Patients and Linguistic and Cultural Mediators
			Montemurro S., Iudici A., Mondini S.	Cultural Awareness: A Tool for Recognizing Biases and Stereotypes in Clinical Settings
11.15-13.00 Aula 12 Palazzina Tartaruga	Group methodology in clinical and non- clinical setting	<b>Proponente:</b> Giovanna Celia UniPegaso  <b>Discussant:</b> Giorgia Margherita Università degli Studi di Napoli Federico II	Terrone G., Rossi R.	BullyBuster: Importance of Prevention and Group Work
			Celia G., Mancone S.	Integrating Narrative Mapping and Sentiment Analysis: A Hybrid Approach to Clinical Group Dynamics
			Spinoni M., Grano C.	Psychophysical health and body awareness during pregnancy: preliminary evidence from a group

				intervention based on polyvagal theory
			Pace C.S., Muzi S., Moretti M., Barone L.	A pilot study on the group attachment-based intervention eConnect STAFF for professional caregivers of adolescents in residential care
11.15-13.00 Aula 13 Palazzina Tartaruga	<i>The Multiple Declinations of Real and Virtual Aggressiveness on Sexual Wellbeing</i>	<b>Proponente:</b> Erika Limoncin <i>Sapienza Università di Roma</i>  <b>Discussant:</b> Daniele Mollaioli <i>Università degli Studi di Messina</i>	Antoniou A., Limoncin E.	The role of internal and external consent and of mentalized affectivity in sexual satisfaction
			Ciocca G., Origlia G.	Paranoid Ideation and Psychoticism in their specific relationship with Problematic Sexuality
			De Vettor M.	Beyond Revenge Porn, a Social Network Analysis of an Image-Based Sexual Abuse perpetrator community
			Fontanesi L., Ceravolo F., Così G.	Mating strategies in the manosphere: an evolutionary approach to address Incel's relationships
<b>SESSIONI TEMATICHE IN PARALLELO</b>				
11.15-13.00 Aula II Palazzo Florenzi	Emerging Issues in Gender and Sexuality	<b>Chair:</b> Luca Rollè <i>Università degli Studi di Torino</i>	Amodeo A. L., Cappotto C., Antuoni S., Borrelli G., Esposito C., Montella C., Scafaro D.	Alias career at university: at the SInAPSi University Centre the "Solà" group to create new spaces and perspectives
			Brandelli Costa A., Colissi J.	Gendered Clinical Implications of Social Support's Role Against Minority Stress: Baseline Findings from a Brazilian LGBT+ Online Intervention Development Study
			Vallone F., Lambiase C. V., Cattaneo Della Volta M. F., Zurlo M. C.	Work-related Stress and Psychopathological Risk Among Nurses: Specificities in Coping Profiles according to Gender and Life/Career Stages
			Carbone A., Valerio P., Drescher J.	Lives on the Margins: LGBTQ+ Youth and

				Mental Health in inland area of Central-Southern Italy
			Rucco D., Marchesin S., Prunas A.	Narratives and challenges of trans* activism on social media
			Dinapoli L., Marconi E., Chiesa S., Massaccesi M., Marazzi F., Autorino R., Chiloiro G., Manfreda S., Mastronuzzi A., Sani L., Frascino V., Valentini V., Dinapoli N., Tagliaferri L., Colloca G. F., Gambacorta M. A.	Gender Role in Radiotherapy: Psychosocial Differences Between Males and Females During Cancer Care. Single-Centre Report in Adult and Paediatric Oncological Patients
			Lacatena M., Sommantico M.	Preliminary results of a quali-quantitative study on the lived work experience of LG people
11.15-13.00 Aula III Palazzo Florenzi	Contemporary Clinical and Social Issues	<b>Chair:</b> Silvia Casale <i>Università degli Studi di Firenze</i>	Belluzzo M., Giaquinto V., Esposito C., De Alfieri E., Volpe D., Amodeo A. L.	Navigating Sexuality and Relationships in Neurodevelopmental and Severe Mental Health Conditions: A Qualitative Study of Caregiver Perspectives
			Onofrio R., Di Tella M., Falco S., Castelli L., Adenzato M., Ghiggia A.	Loneliness: relationship between individual characteristics and depressive symptoms
			Conte S., Ferranti G., Zuccherò A., Difonte A., Orio P., Donadio, V.	Are electromagnetic hypersensitivity and fibromyalgia actually small fiber neuropathies? A preliminary study
			D'Ettorre M., Di Crosta A., Verrocchio M.C., Palumbo R., Marchetti D.	Examining arousal and emotional valence in the responses of risk and no-risk gamblers in the general population
			Gialdi G.	Beyond the Heatwave: Exploring Eco-Anxiety and Eco-Depression in the Context of Climate Change
			Pizzini B., Ciccarelli M., Nigro G., Cosenza M.	The role of psychological distress, effort-reward imbalance and decision-making style in dropout intentions: a cross-sectional study on student sample
			Vagni M., Giostra V., Ottaviani I., Morresi S., Maiorano T.	What resilience skills do emergency workers need during a

				widespread socio-health crisis? The role of hardiness and resilience in burnout and secondary trauma
			Magnani B., Lenzo V., Isgro C., Franceschini C., Sardella A., Cacioppo M., Caretti V., Musetti A.	Linking depressive symptoms and time perception through spatial attention in middle-aged adults: preliminary results
			Spagnolo G., Ferrarese D., Di Vincenzo F., Vecchione M., D'Onofrio A.M., Camardese G., Sani G., Gasbarrini A., Cammarota G., Scaldaferrì F., Chieffo D.P.R.	The Moderating Role of Adverse Childhood Experiences in the Relationship between Crohn's Disease Activity and the Development of PTS Symptoms
13.00-14.15	<b>Pausa Pranzo</b>			
13.00-14.15	<b>PROSEGUE TERZA SESSIONE INTERATTIVA POSTER</b> Palazzo Florenzi			
<b>SIMPOSI IN PARALLELO</b>				
14.15-16.00 Aula Tesi Palazzo Florenzi	<i>The perspective of clinical psychology on Diabetes care: Current and future dimensional trajectories</i>	<b>Proponente:</b> Anna Lucia Ogliari <i>Università Vita-Salute San Raffaele</i>  <b>Discussant:</b> Giorgia Margherita <i>Università degli Studi di Napoli Federico II</i>	Ogliari A.L., Tobia V., Bonfanti R., Gambarini A.	The impact of the interplay between executive functions and body image on psychopathological dimensions in youth with Type 1 Diabetes
			Perego G., Milano F., Gatti F., Catarinella A., Milazzo B.M., Bosi E., Di Mattei V.E., EDENTIFI consortium	The EDENTIFI Project: early screening for Type 1 Diabetes and its psychosocial impact in the European context
			Indelicato L.	Role and competencies of the psychologist in diabetes care according to the consensus report of international experts
			Castelnuovo G., Pietrabissa G.	Type 2 Diabetes and Stigma: The Role of Clinical and Health Psychology

<p>14.15-16.00 Aula Magna Palazzo Firenze</p>	<p><i>From Understanding to Treatment: Emerging Challenges across Behavioral Addictions</i></p>	<p><b>Proponenti:</b> Silvia Casale <i>Università degli Studi di Firenze</i></p> <p>Maria Di Blasi <i>Università degli Studi di Palermo</i></p> <p><b>Discussant:</b> Valentina Boursier <i>Università degli Studi di Napoli Federico II</i></p>	<p>Scalone A., Marti K., Giardina A., Billieux J., Schimmenti A.</p>	<p>Gaming disorder symptoms are associated with unintegrated memories: a mixed-method pilot study</p>
			<p>Cavalli R.G., Tacchino C.</p>	<p>The metacognitive functioning in Love Addiction: A research on 30 patients</p>
			<p>Salerno L., Ghinassi S., Fioravanti G., Graffeo M.T., Di Blasi M., Casale S.</p>	<p>The Roles of the Different Facets of Mattering in the Relationship Between Attachment Anxiety and Ghosting</p>
			<p>Venuleo C., Marinaci T.</p>	<p>"L'azzardo è fare rete". An action research project for the prevention of problem gambling among women and the elderly</p>
<p>14.15-16.00 Aula IV Palazzo Firenze</p>	<p><i>Including Dads, Strengthening Families: Addressing Fathers' Mental Health and Role in Caregiving</i></p>	<p><b>Proponenti:</b> Bianca Filippi <i>Università degli Studi di Padova</i></p> <p>Elisa Mancinelli <i>Università degli Studi di Padova</i></p> <p><b>Discussant:</b> Michele Giannotti <i>Università degli Studi di Trento</i></p>	<p>Mancinelli E., Filippi B.</p>	<p>Breaking barriers: a scoping systematic review of needs, barriers, and facilitators to perinatal fathers' help-seeking behaviors</p>
			<p>Casu G., Baldoni F., Agostini F.</p>	<p>Dyadic associations between perinatal affective symptomatology and dyadic adjustment in the third trimester of pregnancy</p>
			<p>Zarbo C., Vardaro F.</p>	<p>Paternal Well-Being and Caregiving Involvement: Findings from the TI-GENERO Study in Italy</p>
			<p>Porreca A.</p>	<p>Father and child self-regulation: which role of parenting behaviors?</p>

14.15-16.00 Gipsoteca	<i>Pathways to Psychosis: Environmental Risk Factors, Psychological Processes, and Early Care</i>	<p><b>Proponenti:</b> Lucia Sideli <i>LUMSA Università di Roma</i></p> <p>Tommaso Boldrini <i>Università Telematica Pegaso</i></p> <p><b>Discussant:</b> Andrea Fossati <i>Università Vita-Salute San Raffaele</i></p>	Poletti M.	Self-disorders in the schizophrenia spectrum: a neurodevelopmental and phenomenological model
			Rossi R.	Gender differences in complex pathways to psychosis
			Sideli L., D'Offizi D., La Rosa C.	The role of cannabis use along the psychotic continuum: evidence on mediating and moderating factors
			Boldrini T., Lo Buglio G., Solmi M.	Clinical guidelines for the prevention of psychosis
14.15-16.00 Aula Magna Palazzo Manzoni	<i>The child in hospital: the clinical psychological approach in childhood</i>	<p><b>Proponente:</b> Valeria Carola <i>Sapienza Università di Roma</i></p> <p><b>Discussant:</b> Biancarosa Volpe <i>Università degli Studi di Padova</i></p>	Cellucci F., Morale C., Di Vincenzo G., Ferretti A., Di Nardo G., Parisi P., Nicolais G.	Primary headache in pediatric setting and the role of exposure to stressful environments: a psychophysiological and biological investigation
			Bignamini C.M., Cadonati B., Spada M.S.	The hospitalized child: a clinical psychological approach, tools and resources
			De Berardinis, D.	Meet, get to know each other, grow. The work team in the Neonatal Intensive Care Unit
			Vegni E., Borghi L.	From Pediatric to Adult Care: Psychological Challenges in the Transitional Age
14.15-16.00 Sala Adunanze Palazzo Manzoni	<i>LGBT+ stigma and discrimination seen from multiple perspectives</i>	<p><b>Proponente:</b> Luca Rollè <i>Università di Torino</i></p>	Urone C., Grillo R., Musso N., Naccari C., Miano P.	Sexual Consent in LGB Individuals: Dynamics, Challenges, and Psychological Implications

		<p><b>Discussant:</b> Vincenzo Bochicchio <i>Università della Calabria</i></p>	Trombetta T., Rollè L.	How internalized homonegativity and adult attachment shape relationship quality in gay and lesbian people in Italy: a moderation model
			Policardo G.R., Nerini A., Ciucci L., Matera C.	Body acceptance buffers trans-specific body anxiety: A moderation study among transgender individuals
			Serri, F., Lampis, J., Angioni, M., S., Carta, S., Cataudella, S., De Simone, S., Pileri, J., Lasio, D.	Affirmative Practices and Trans Subjectivities: The Role of Teacher Training Amid Anti-Gender Backlash
<p>14.15-16.00 Aula 11 Palazzina Tartaruga</p>	<p><i>Non-response and drop-out in psychotherapy of borderline personality disorder</i></p>	<p><b>Proponente:</b> Irene Messina <i>Università Mercatorum</i></p> <p><b>Discussant:</b> Antonino Carcione <i>Università degli Studi "Guglielmo Marconi"</i></p>	Messina I., Baggio T., Grecucci A., Lanfredi M., Pedrini L., Rossi R.	Neural Correlates of Treatment Response in Borderline Personality Disorder: A Multi-Kernel Learning Analysis of Gray and White Brain Matter
			De Salve F., Oasi O.	Maladaptive Personality Traits and Therapy Dropout in Young Adults: The Role of Psychoticism, Borderline Symptoms, and Functioning
			Teti A., Falgares G., Giannone F., Costanzo G., Infurna M.R.	Understanding Therapeutic Challenges: Borderline Personality Traits and Their Influence on Clinical Outcomes
			Teti. A.	Predicting outcomes in psychotherapy for borderline personality disorder: A systematic review
<p>14.15-16.00 Aula 12 Palazzina Tartaruga</p>	<p><i>The Critical Role of Longitudinal Studies in the Perinatal Period: Insights from Diverse Contexts</i></p>	<p><b>Proponenti:</b> Laura Vismara <i>Università degli Studi di Cagliari</i></p> <p>Anna Maria Della Vedova</p>	<p>Della Vedova A.M., Forte M., Pellicer A., Galliano D., Garrido N., Matthey S.</p>	<p>Distress and development of prenatal attachment during pregnancy in women conceiving through oocyte donation or in vitro fertilization (IVF)</p>

		Università degli Studi di Brescia		
		<b>Discussant:</b> Erica Neri Alma Mater Studiorum Università di Bologna	Frau C., Vismara L., Murgatroyd C., Schechter D.	Exploring the Role of Maternal Attachment and Postnatal Stress on Mother-Infant Bonding at 6 Months
			Trumello C., Candelori C., Lombardi L., Marino V., Babore A.	Understanding the impact of preterm birth through time: The role of longitudinal research on mother-infant relationships and child development
			Paradiso M.N., Rollè L.	Examining the role of Adult Attachment and Reflective Functioning in the context of Perinatal Intimate Partner Violence: A study protocol
<b>SESSIONI TEMATICHE IN PARALLELO</b>				
14.15-16.00 Aula II Palazzo Firenze	New Perspectives on Trauma and Dissociation	<b>Chair:</b> Adriano Schimmenti Università degli Studi di Enna Kore	Tarantino V., De Angelis M., Veneziani G., Zanini L., Spitoni G. F., Trentini C.	fNIRS assessment during an Emotional Stroop Task: the relationship between early interpersonal trauma, interoceptive awareness, and activity in the prefrontal cortex
			Mesce M., Galvez-Sánchez C. M.	Dissociation and Fibromyalgia: A Systematic Review of the Literature
			Rossini P. G., Gazzillo F., Kealy D.	Childhood emotional abuse and somatic symptoms: the mediating effect of self-hate
			Triscari S., Romano L., Giunta S.	Echoes of the pandemic: a network analysis of post-traumatic symptoms, post-traumatic growth, and defense mechanisms four years after Covid-19
			Musicò A.	Media and dissociation: Comparing gameplay and film watching through experimental design
			Giostra V., Vagni M., Maiorano T., Ottaviani I., Morresi S.	The Relationship Between Trauma and Immediate and Delayed Suggestibility in Sexually Abused Children
			Zagarìa A.	Toward an Assessment of Adult Attachment Trauma and Its Subtypes

14.15-16.00 Aula III Palazzo Firenze	Contemporary Advances in Clinical Interventions	Chair: Silvia Salcuni <i>Università degli Studi di Padova</i>	Mazzeo O., Gennaro A., Lagetto G.	Innovative Moments and Affective Saturation: A dual lens on therapeutic change
			Monti L., Kotzalidis G., Brozzi C., Troccoli E., Iacovino R., Moffa F., Valentini V., Bria E., Micciché F., Cardillo A., Belella D., Lafuenti L., Chieffo, D.P.R.	From the Dyad to the Triad: The Therapeutic Relationship as a Co-Shared Healing Space in Oncology
			Trimoldi G., Arduin A., Scottá F., Maniglio R., Sambin M.	The Development of Relational Competencies in Psychotherapy Trainees: Insights from the Emotional Evolutionary Experience Training Process
			Pedone R., Dal Monte F., Farina B., Monticelli F.	When Cooperation Fails: A Micro-Analytic Study of Motivational Systems in a Therapeutic Dyad
			Iuso S., Trotta N., Ventriglio A., Calvio A., Leccese A., Genzano N., Petito A.	Adherence to treatment after family psycho-education: Preliminary results
			Milesi S., Negri A., Barazzetti A.	Psychological factors associated with the propensity to seek help in the primary care setting
			Olive M. V., La Tona A., Ostwald V., Lo Coco G., Compare A., Tzur Bitan D., Masella C.	Integrating Digitally Enhanced Routine Outcome Monitoring in Psychotherapeutic Practice: Preliminary Evidence from an Implementation Study
			Conte S., Guoin M. A., Busonera A., Cataudella S.	Do you want to dance with me? How dance regulate the emotions?
			Topino E., Gori A.	The Psychotherapist Expertise Questionnaire (PEQ): a new theoretically sound scale to assess therapist expertise
16.00-16.30	<b>Coffee Break</b> Palazzo Firenze			
16.30-18.00	<b>ASSEMBLEA SOCI, PREMIAZIONE – CHIUSURA DEL CONGRESSO</b> Aula Magna – Palazzo Firenze			
20.30	<b>Cena Sociale</b>			